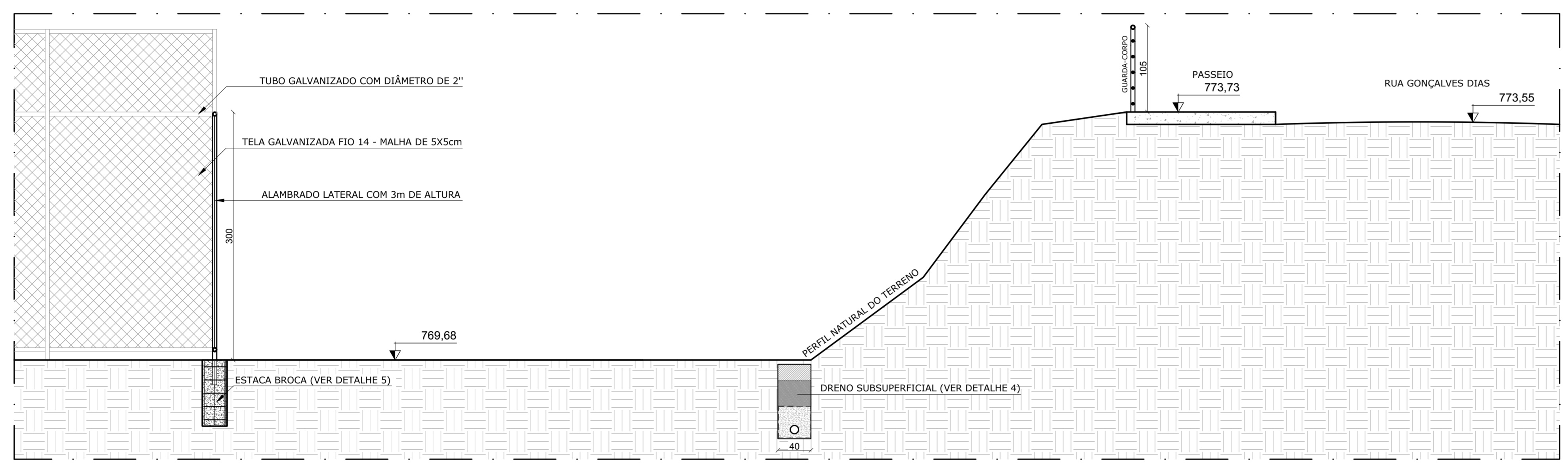
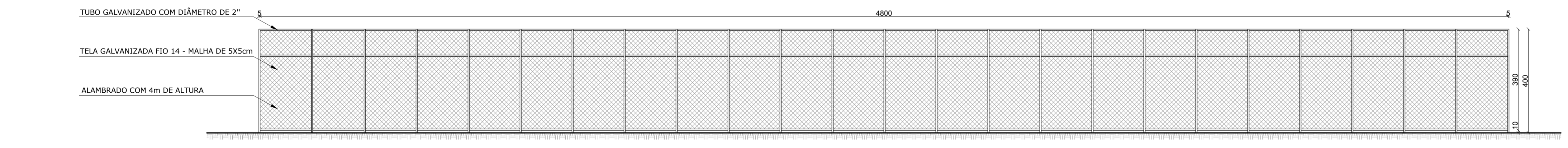


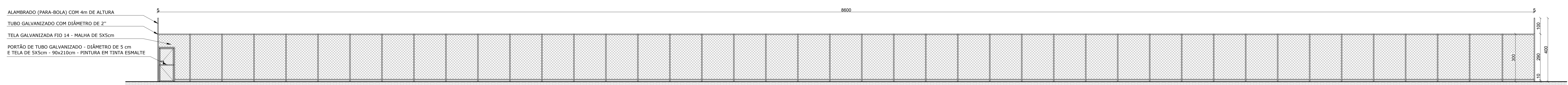
CORTE AA
ESCALA.....1/50



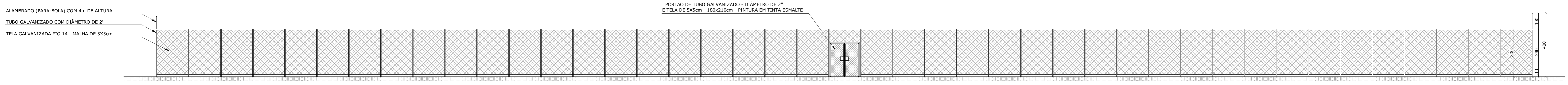
CORTE BB
ESCALA.....1/50



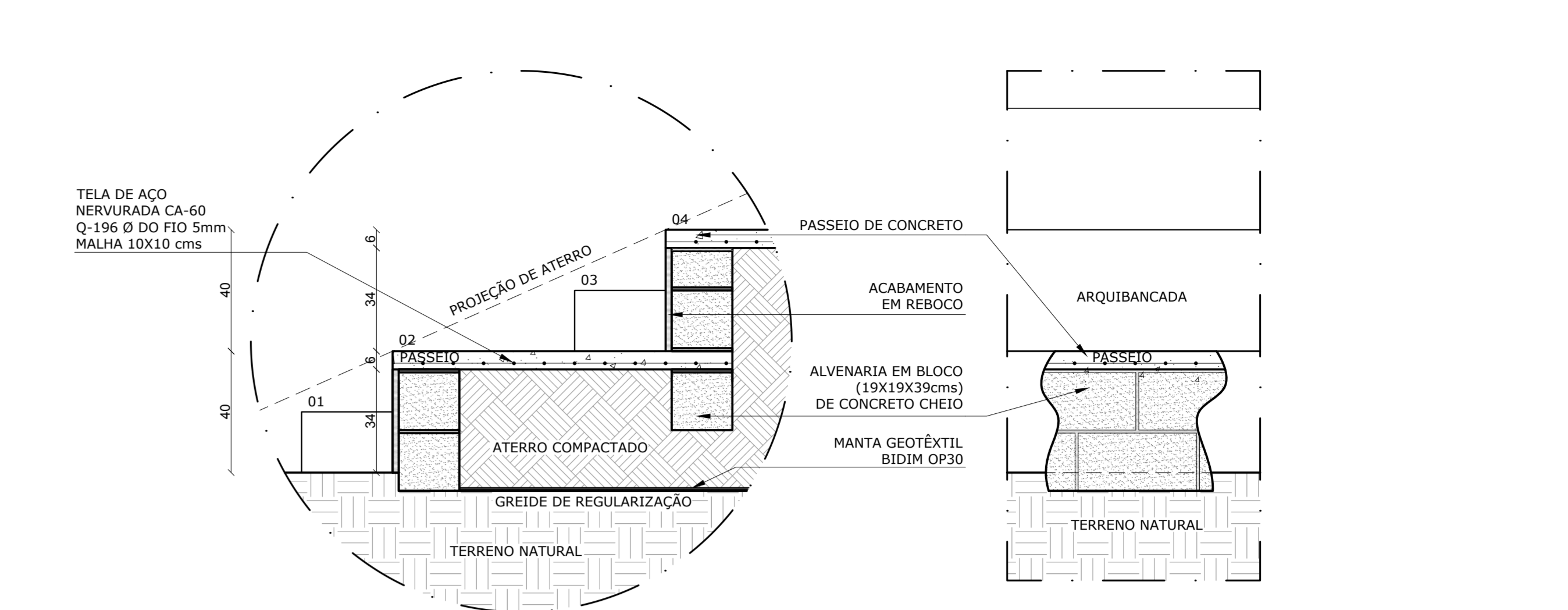
FACHADA FRONTAL
ESCALA.....1/125



FACHADA LATERAL DIREITA
ESCALA.....1/125

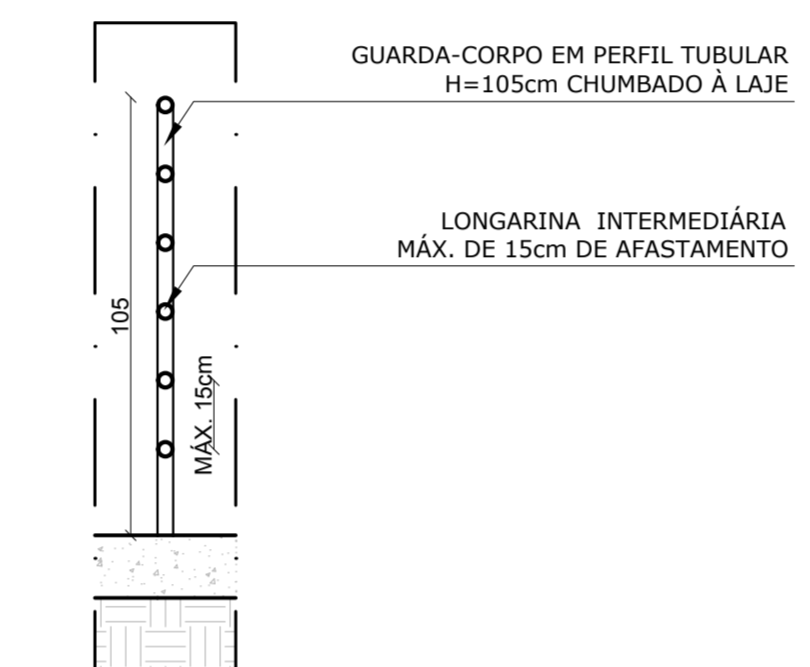


FACHADA LATERAL ESQUERDA
ESCALA.....1/125

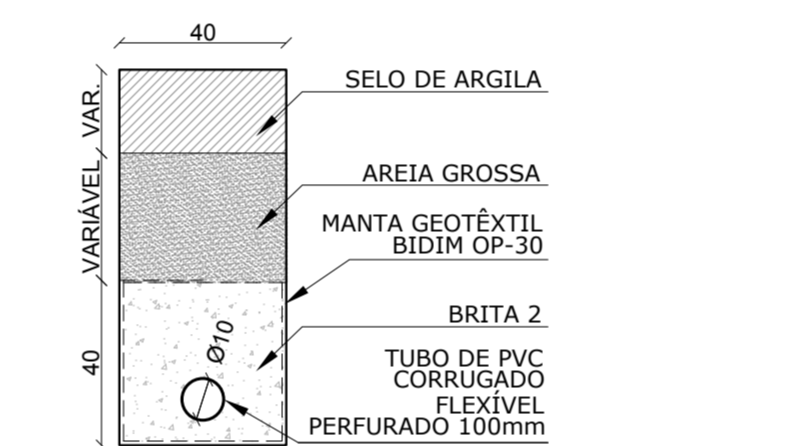


DETALHE 1: ARQUIBANCADA
ESCALA.....1/20

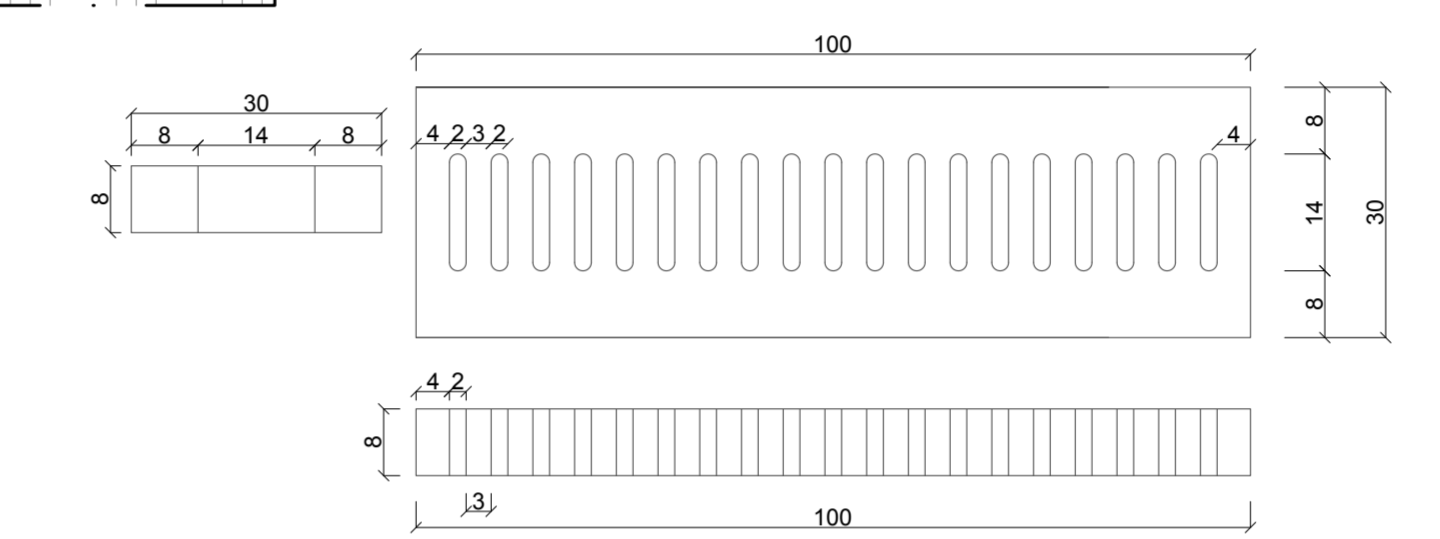
DETALHE 1: ARQUIBANCADA VISTA FRONTAL
ESCALA.....1/20



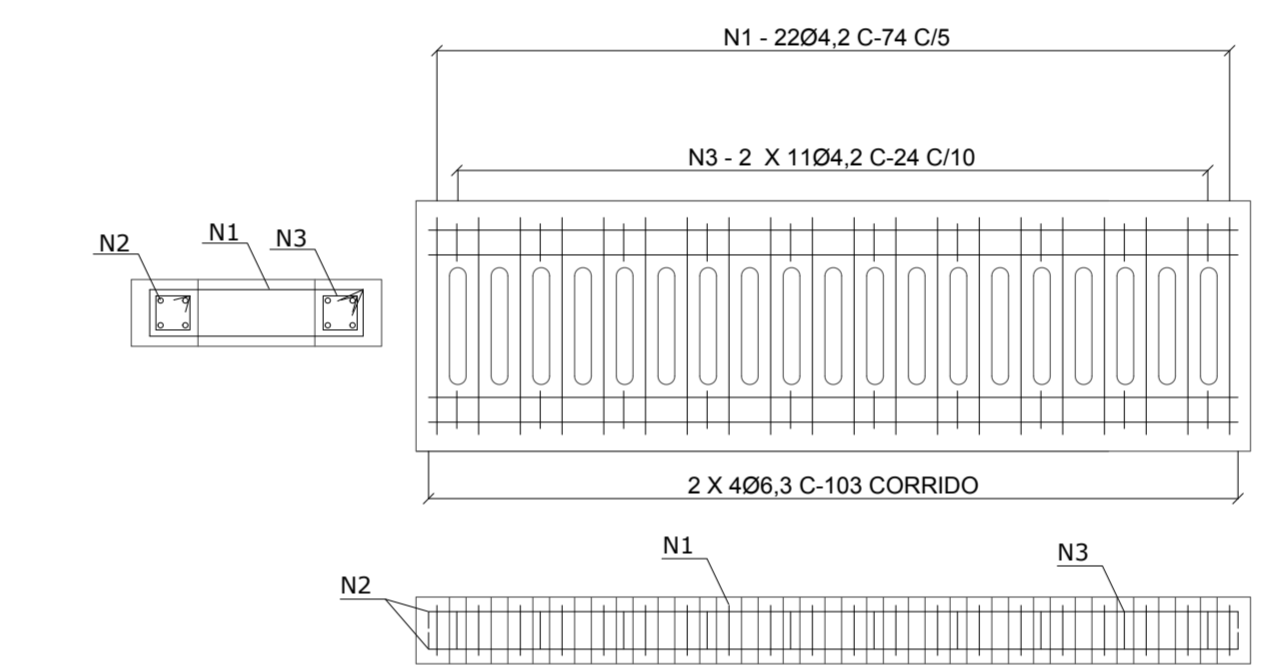
DETALHE 3: GUARDA-CORPO
ESCALA.....1/10



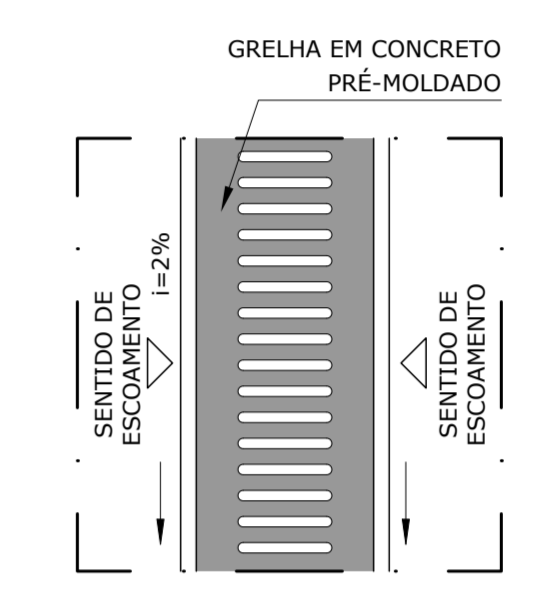
DETALHE 4: DRENO SUBSUPERFICIAL
ESCALA.....1/10



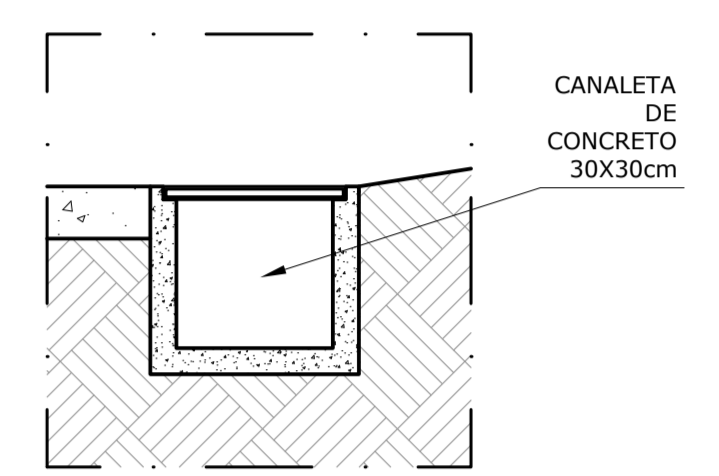
DETALHE 2: FÔRMA DA GRELHA
ESCALA.....1/12,5



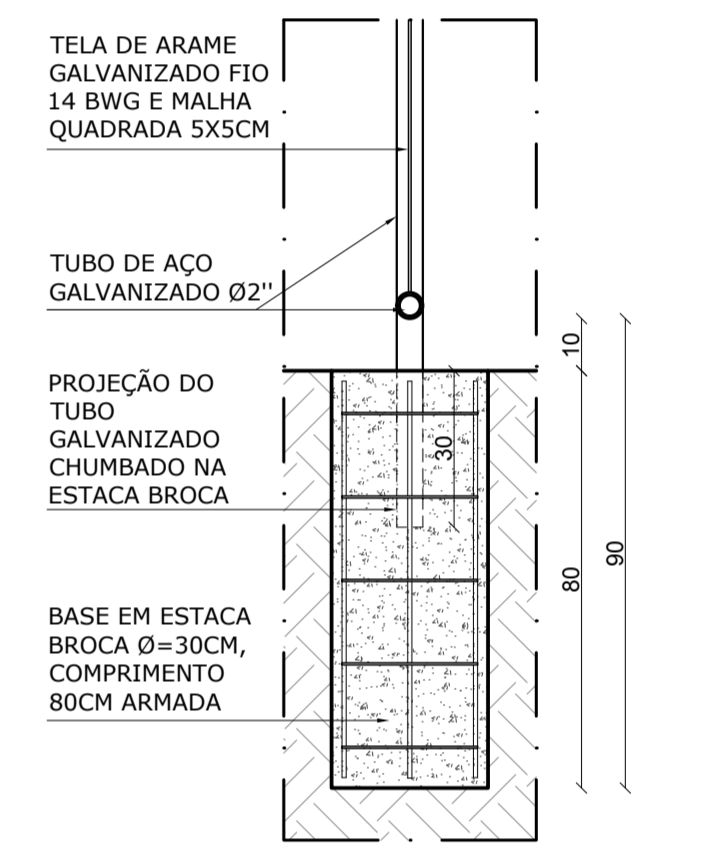
DETALHE 2: ARMAÇÃO DA GRELHA
ESCALA.....1/12,5



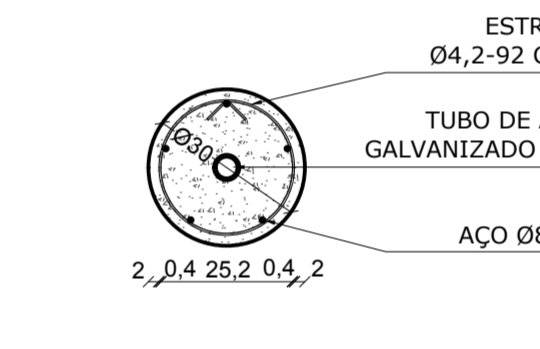
DETALHE 2: GRELHA PRÉ-MOLDADA EM CONCRETO
ESCALA.....1/20



DETALHE 2: CANALETA
ESCALA.....1/20



DETALHE 5: ESTACA BROCA - CORTE
ESCALA.....1/20



DETALHE 5: ESTACA BROCA - PLANTA
ESCALA.....1/20

RT:	ENGº JOSÉ CARLOS MONTEIRO MATA DA SILVA - CREA/MG 56.180 D		
PROJETISTA:	ANA PAULA DIAS		
QUADRO DE REVISÕES			
REVISÃO 1:	REVISÃO 2:	REVISÃO 3:	
APROVADO:	APROVADO:	APROVADO:	

SECRETARIA DE OBRAS PÚBLICAS DEPARTAMENTO DE ENGENHARIA E ARQUITETURA	
SECRETÁRIO DE OBRAS	BRUNO MÁRCIO MOREIRA ALMEIDA
SUPERINTENDENTE DE OBRAS	JOSÉ CARLOS MONTEIRO MATA DA SILVA CREA/MG 56.180 D



PREFEITURA MUNICIPAL DE SANTA LUZIA
ADM. DELEGADO CHRISTIANO XAVIER

CONTEÚDO DA PRANCHA:	ESCALA: INDICADA
DATA:	02/05/2019
FOLHA:	03/04

CAMPO DO LONDRINA (RATÃO)