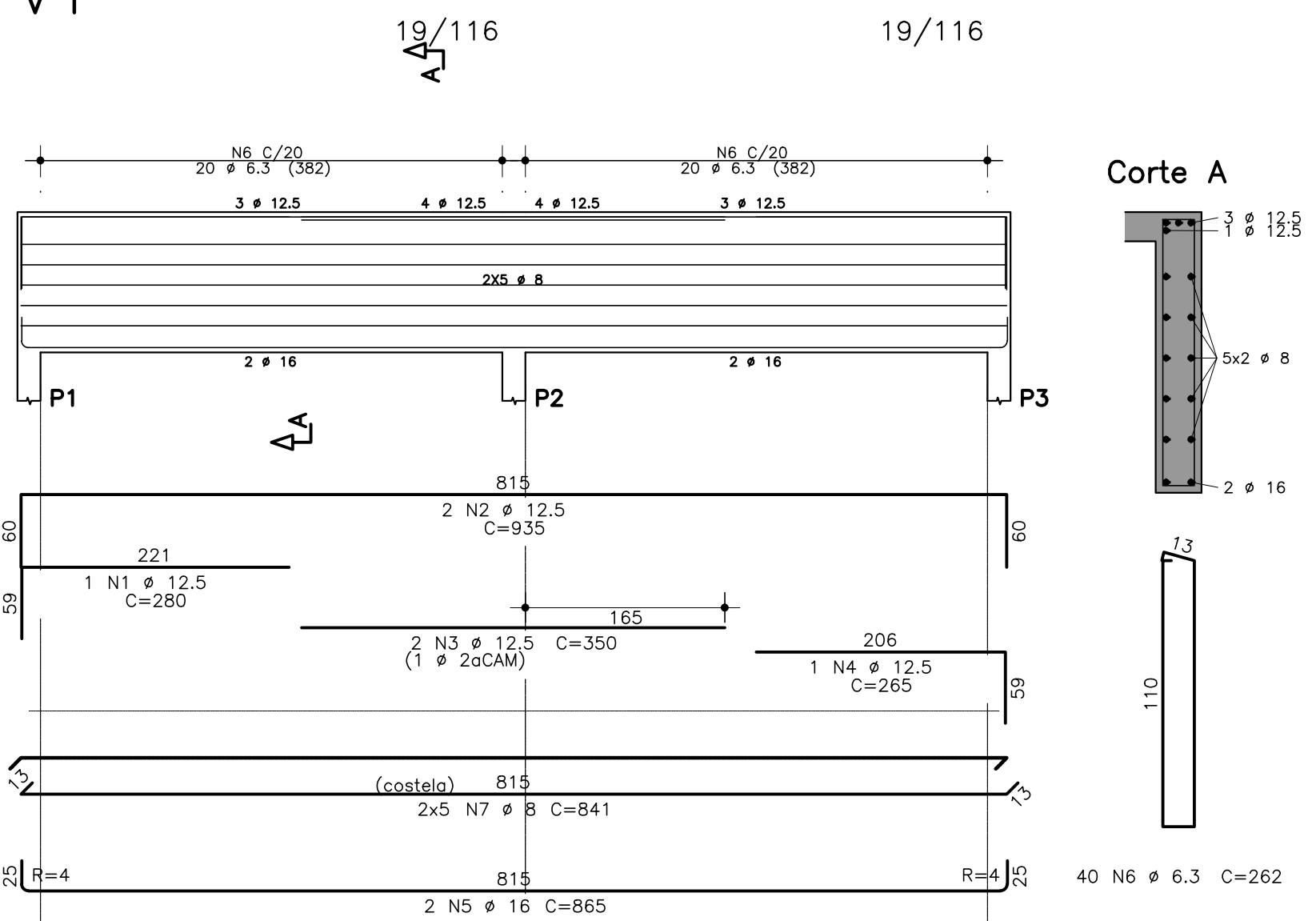
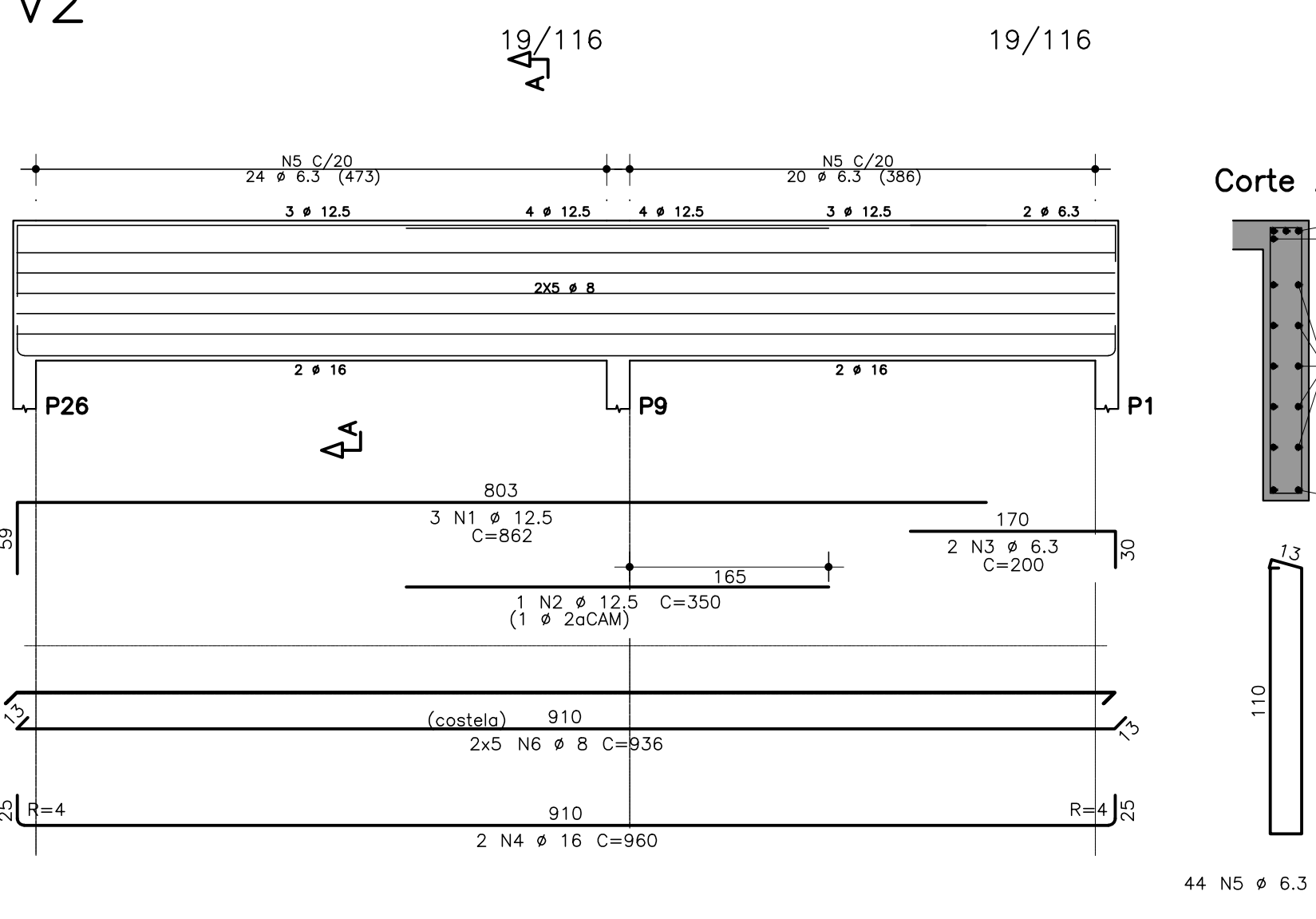


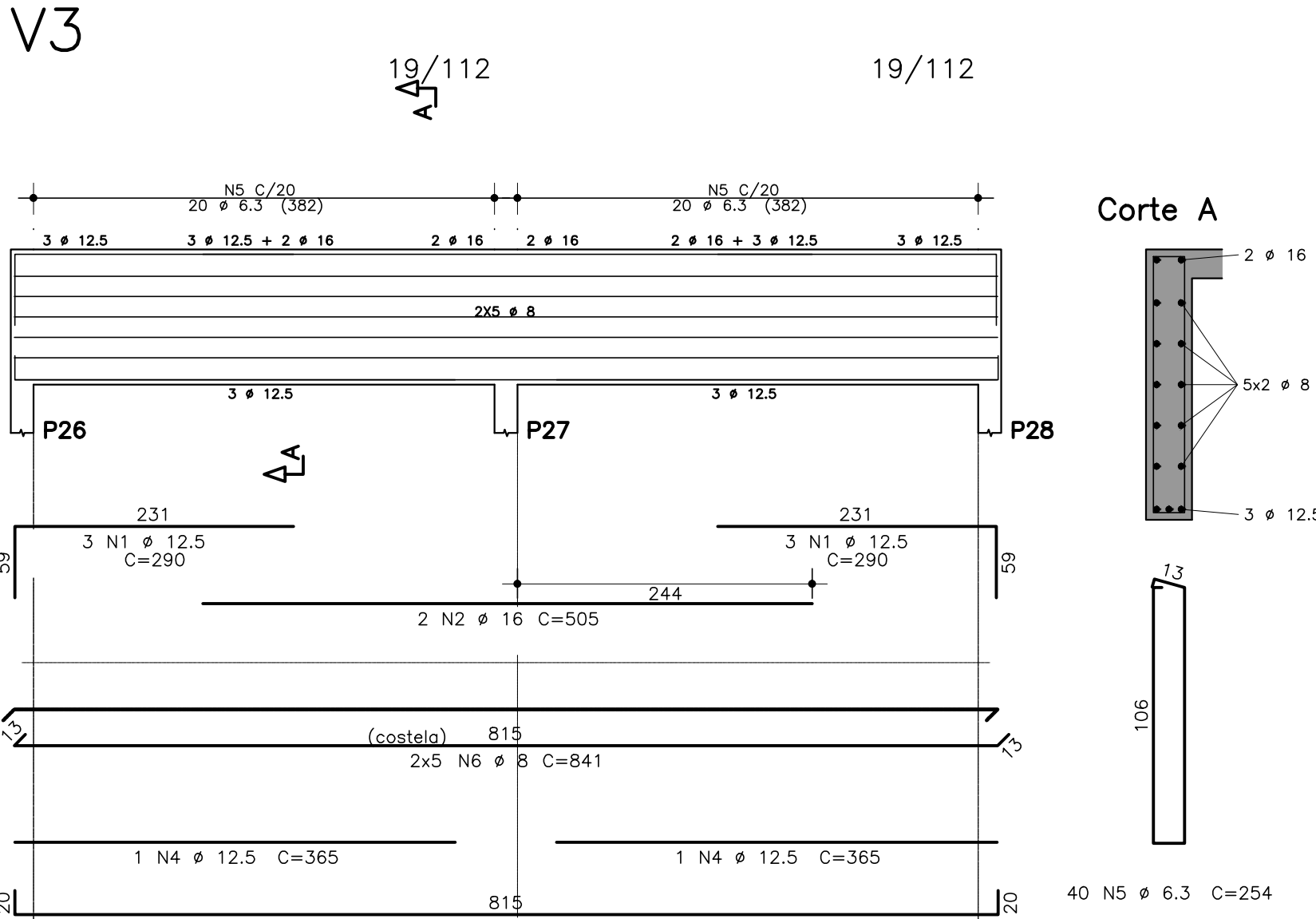
V1



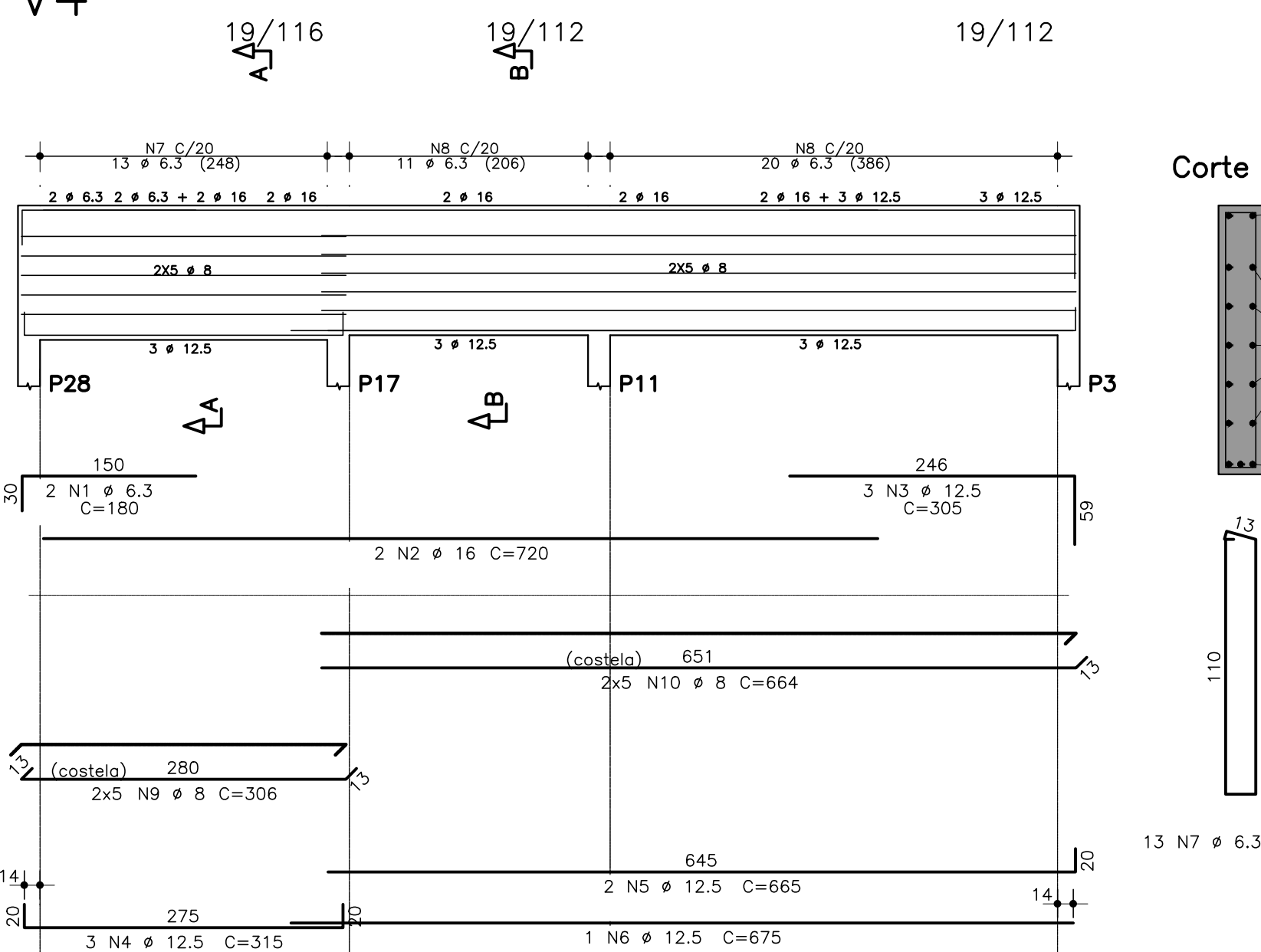
V2



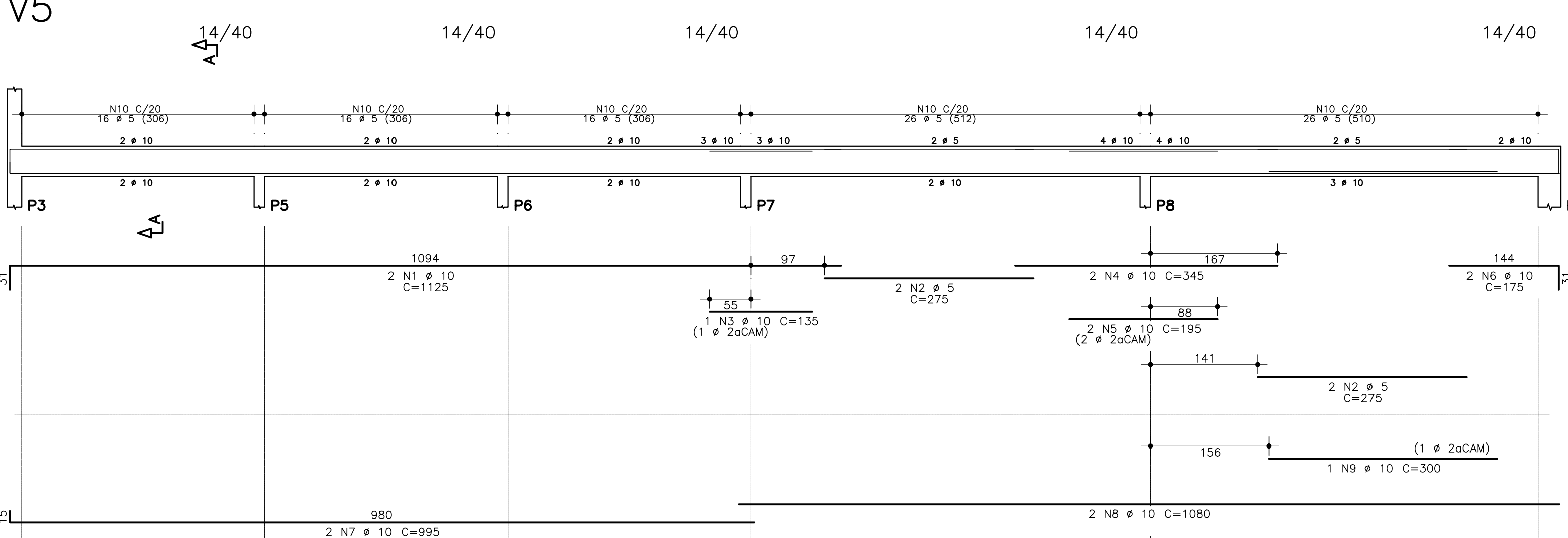
V3



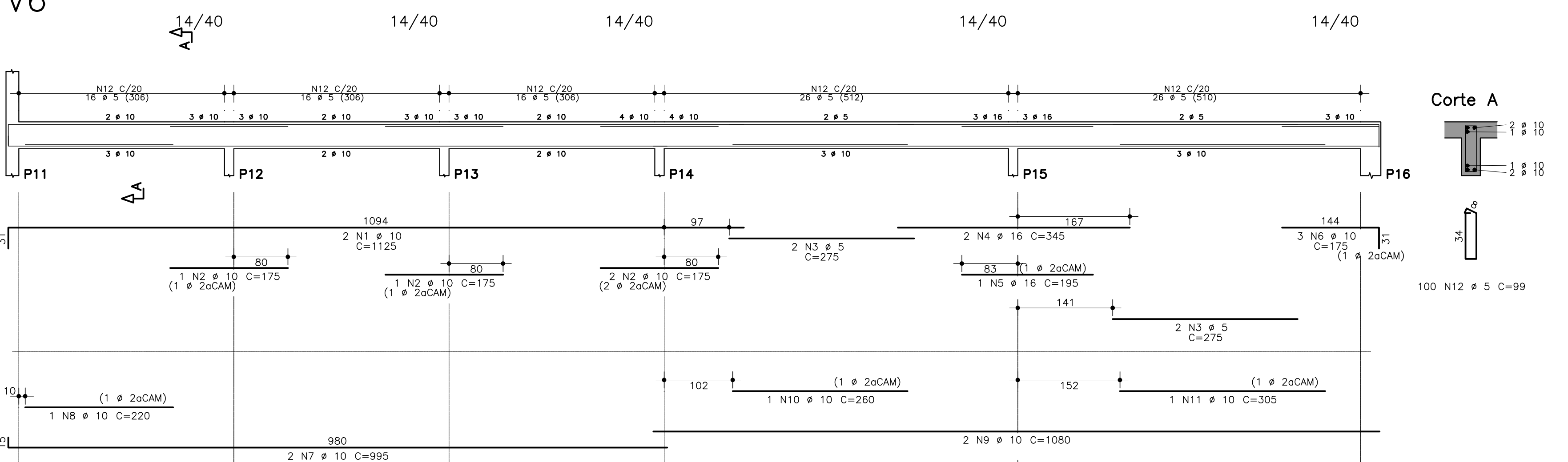
V4



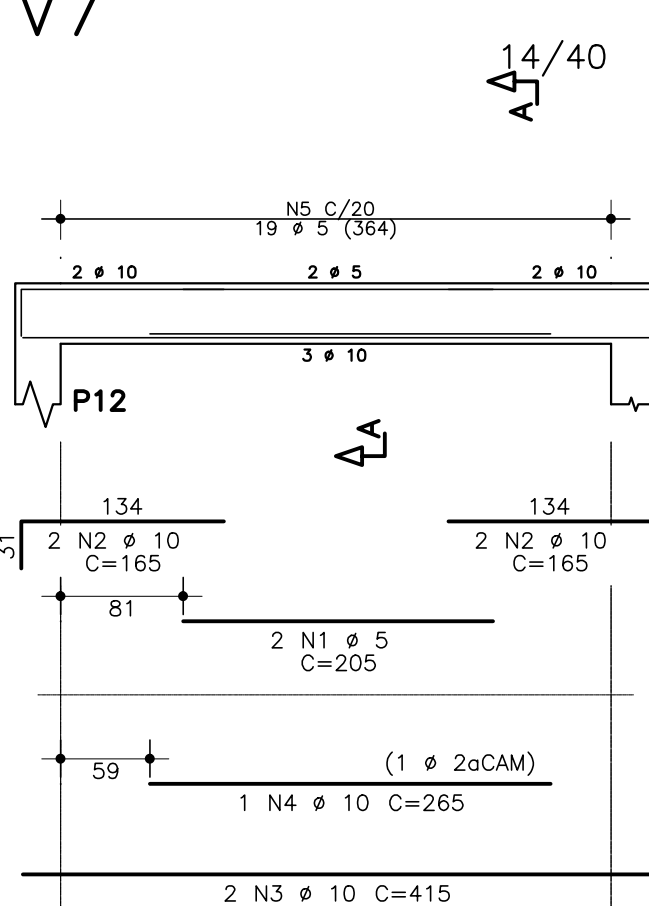
V5



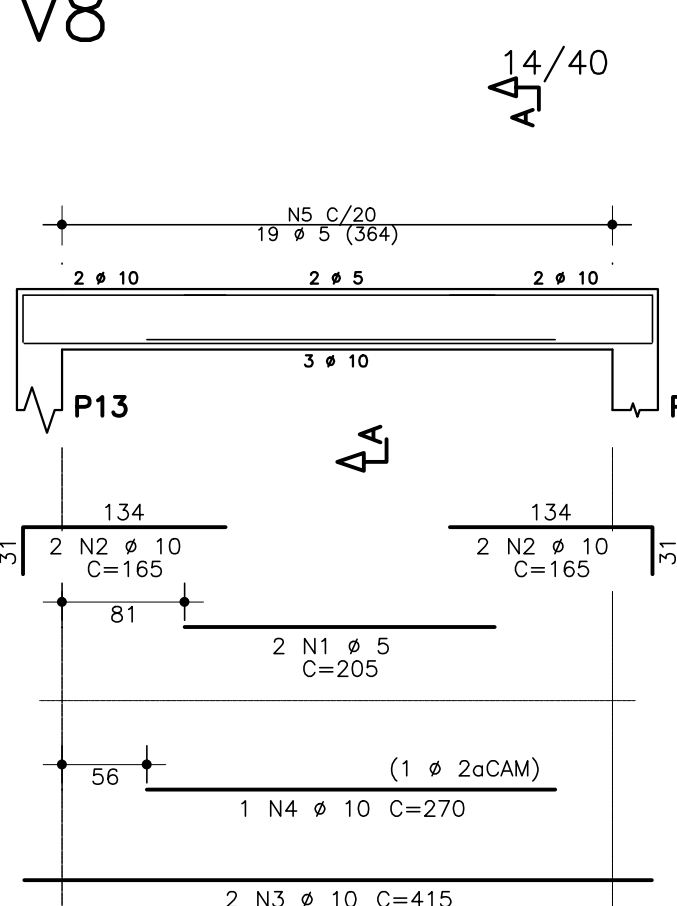
V6



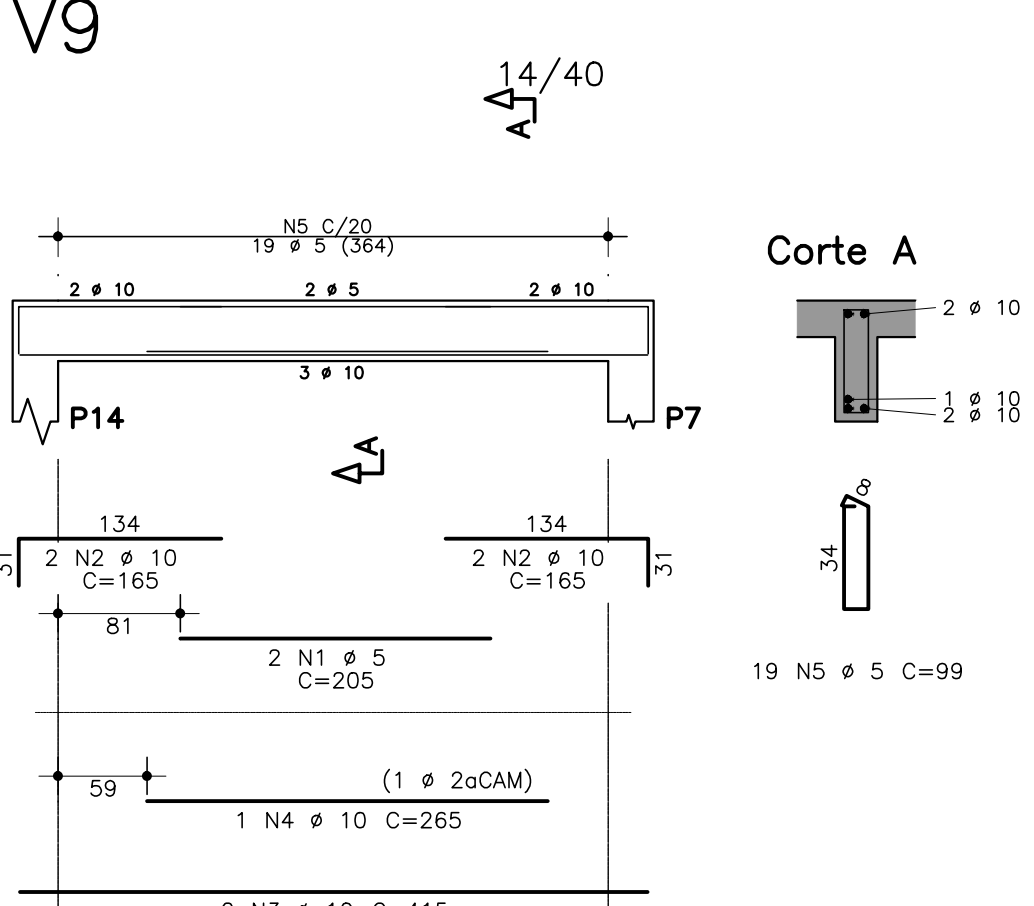
V7



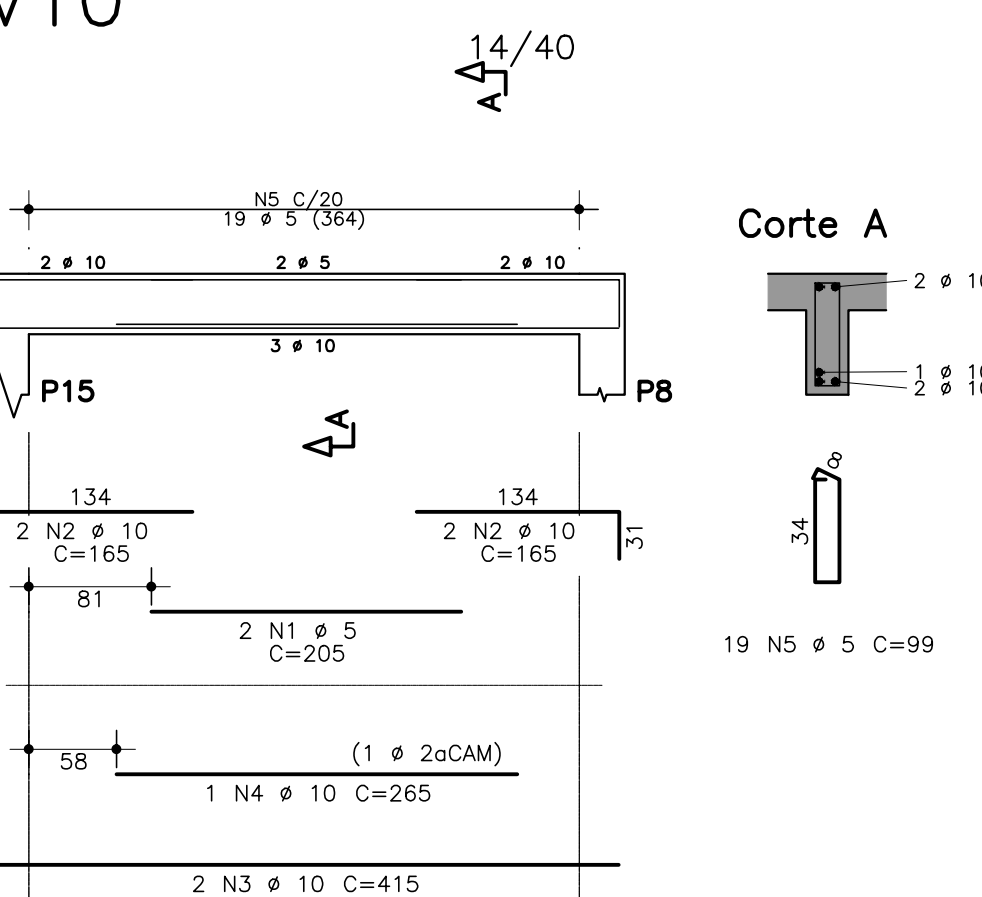
V8



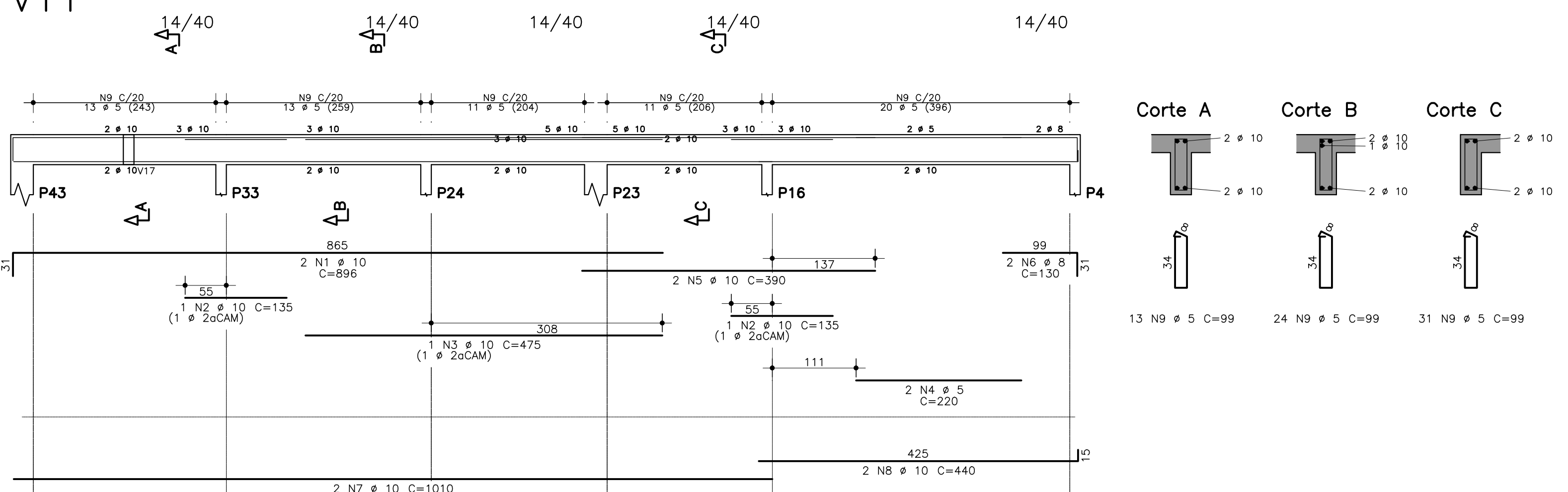
V9



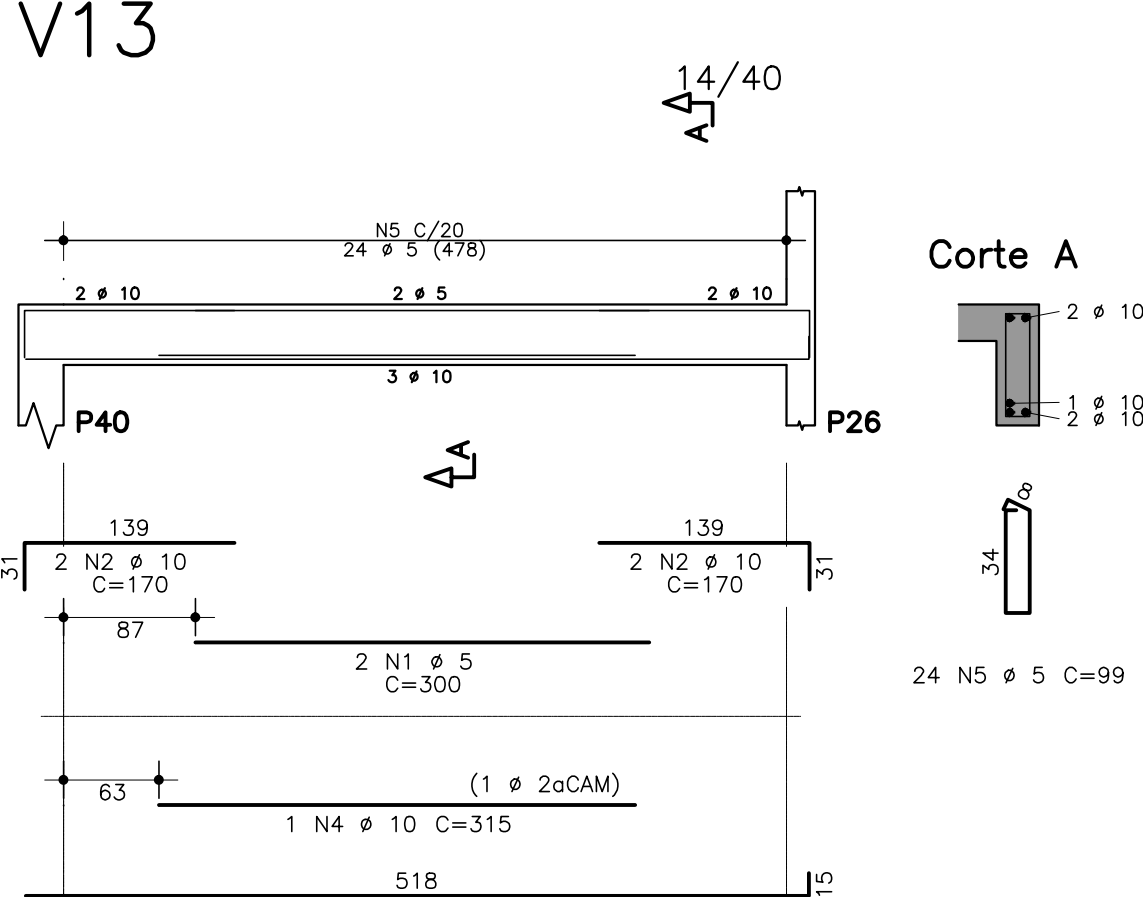
V10



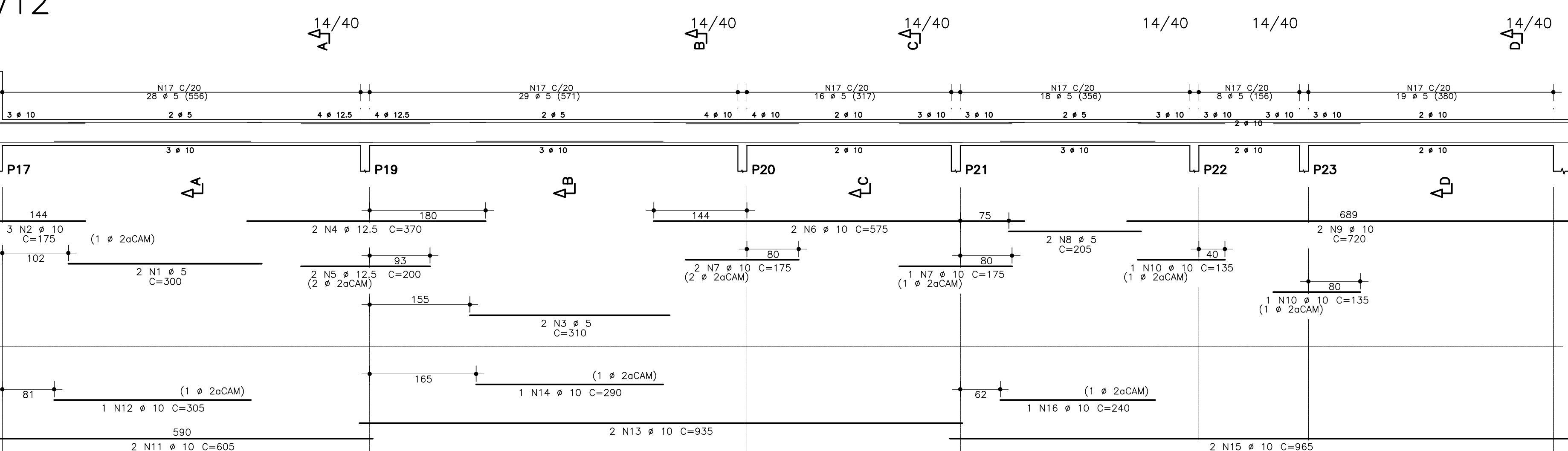
V11



V13



V12



	ACO	POS	BIT	QUANT	COMPRIMENTO	
			(mm)		UNIT	TOTAL
V1						
	50A	1	12.5	1	280	280
	50A	2	12.5	2	935	1870
	50A	3	12.5	2	350	700
	50A	4	12.5	1	265	265
	50A	5	16	2	865	1730
	50A	6	6.3	40	262	10480
	50A	7	6.3	10	841	8410
V2						
	50A	1	12.5	3	862	2586
	50A	2	12.5	1	350	350
	50A	3	12.5	2	200	400
	50A	4	16	2	960	1920
	50A	5	6.3	44	262	11528
	50A	6	6.3	10	841	8410
V3						
	50A	1	12.5	6	290	1740
	50A	2	16	2	505	1010
	50A	3	12.5	2	865	1730
	50A	4	12.5	2	365	730
	50A	5	6.3	40	254	10160
	50A	6	6.3	10	841	8410
V4						
	50A	1	6.3	2	180	360
	50A	2	16	2	720	1440
	50A	3	12.5	3	305	915
	50A	4	12.5	3	315	945
	50A	5	12.5	2	665	1330
	50A	6	12.5	1	675	675
	50A	7	6.3	13	262	3406
	50A	8	6.3	31	254	7874
	50A	9	6.3	10	306	3060
	50A	10	8	10	664	6640
V5						
	50A	1	10	2	1125	2250
	50A	2	5	4	275	1100
	50A	3	10	1	135	135
	50A	4	10	2	345	690
	50A	5	10	2	195	390
	50A	6	10	2	175	350
	50A	7	10	2	995	1990
	50A	8	10	2	1080	2160
	50A	9	10	1	260	260
	50A	10	10	1	305	305
	50A	11	5	100	99	9900
V6						
	50A	1	10	2	1125	2250
	50A	2	10	4	175	700
	50A	3	5	4	275	1100
	50A	4	16	2	345	690
	50A	5	16	1	195	195
	50A	6	10	3	175	525
	50A	7	10	2	995	1990
	50A	8	10	2	220	440
	50A	9	10	2	1080	2160
	50A	10	10	1	260	260
	50A	11	10	1	305	305
	50A	12	5	100	99	9900
V7						
	50B	1	5	2	205	410
	50B	2	10	4	165	660
	50B	3	10	2	415	830
	50B	4	10	1	265	265
	50B	5	5	19	99	1881
V8						
	50B	1	5	2	205	410
	50B	2	10	4	165	660
	50B	3	10	2	415	830
	50B	4	10	1	270	270
	50B	5	5	19	99	1881
V9						
	50B	1	5	2	205	410
	50B	2	10	4	165	660
	50B	3	10	2	415	830
	50B	4	10	1	265	265
	50B	5	5	19	99	1881
V10						
	50B	1	5	2	205	410
	50B	2	10	4	165	660
	50B	3	10	2	415	830
	50B	4	10	1	265	265
	50B	5	5	19	99	1881
V11						
	50A	1	10	2	886	1772
	50A	2	10	3	175	525
	50A	3	10	1	475	475
	50A	4	12.5	2	220	440
	50A	5	10	2	390	780
	50A	6	8	2	130	260
	50A	7	10	2	1010	2020
	50A	8	10	2	440	880
	50A	9	5	68	99	6732
V12						
	50B	1	5	2	300	600
	50A	2	10	3	175	525
	50A	3	10	2	310	620
	50A	4	12.5	2	370	740
	50A	5	12.5	2	200	400
	50A	6	10	2	575	1150
	50A	7	10	2	175	350
	50B	8	5	205	410	
	50A	9	10	2	720	1440
	50A	10	10	2	135	270
	50A	11	10	2	605	1210
	50A	12	10	1	305	305
	50A	13	10	2	935	1870
	50A	14	10	1	290	290
	50A	15	10	2	965	1930
	50A	16	10	1	240	240
	50B	17	5	116	99	11662
V13						
	50B	1	5	2	300	600
	50A	2	10	4	170	680
	50A	3	10	2	533	1066
	50A	4	10	1	315	315
	50A	5	5	24	99	2376

RESUMO AÇO CA 50-60			
ACO	BIT	COMPR	PESO
(mm)	(m)		(kg)
60B	5	246	84
50A	6.3	1440	108
50A	8	361	143
50A	10	117	257
50A	12.5	152	147
50A	16	70	110
Peso Total	60B =		84 kg
Peso Total	50A =		766 kg

ESCALA:
BLOCOS: 1:25
PILARES: SEÇÃO 1:35 / CORTE 1:20
VIGAS: SEÇÃO 1:50 / CORTE 1:25
LAJES: 1:50

SECRETARIA DE OBRAS PÚBLICAS DEPARTAMENTO DE ENGENHARIA E ARQUITETURA		PREFEITURA MUNICIPAL DE SANTA LUZIA ADM. DELEGADO CHRISTIANO XAVIER	
SECRETÁRIO DE OBRAS		BRUNO MÁRCIO MOREIRA ALMEIDA	
RT:		ENGº HUGO KENJI INATOMI - CREA/SP 5063373661 D	
PROJETISTA:		HUGO KENJI INATOMI	
REVISÃO		DATA	
01/03/21		REVISÃO DO CARIMBO	
24/02/21		RETRADA ALGUMAS LAJES EM BALANÇO, UNIFICAÇÃO DAS VIGAS DA RECEPÇÃO	
26/08/19		EMIÇÃO INICIAL	
REVISÃO		DATA	
03/07		REVISÃO	
2		INDICADA	
26/08/2019		INDICADA	
2		INDICADA	