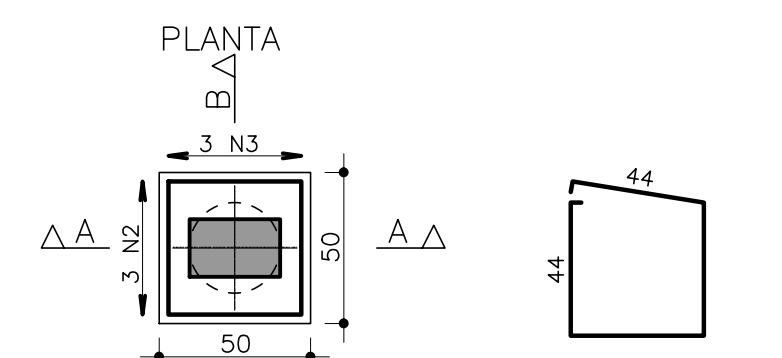
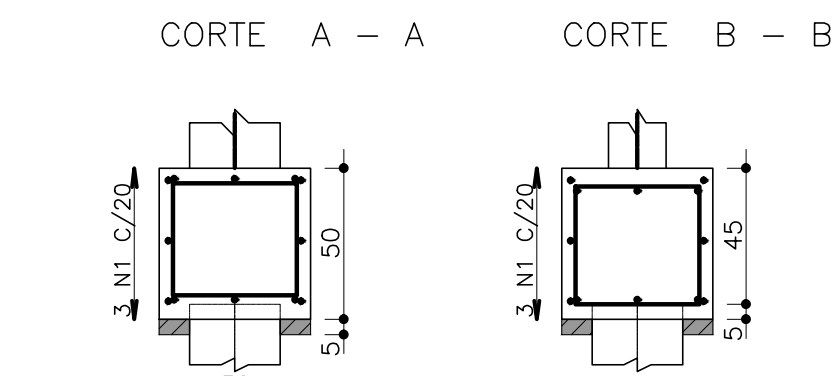


9X

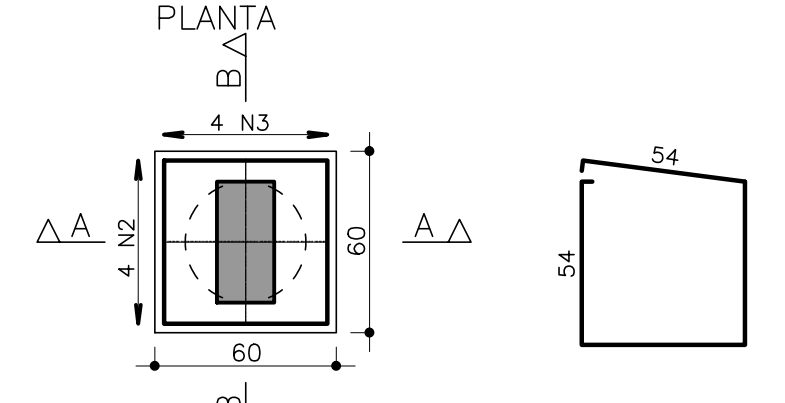


3 N1 8 C/20 C=194

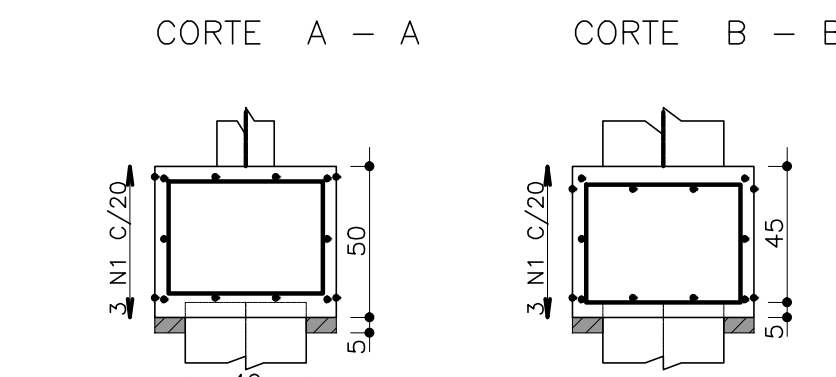


3 N2 ϕ 10 C=179 3 N3 ϕ 10 C=183

10

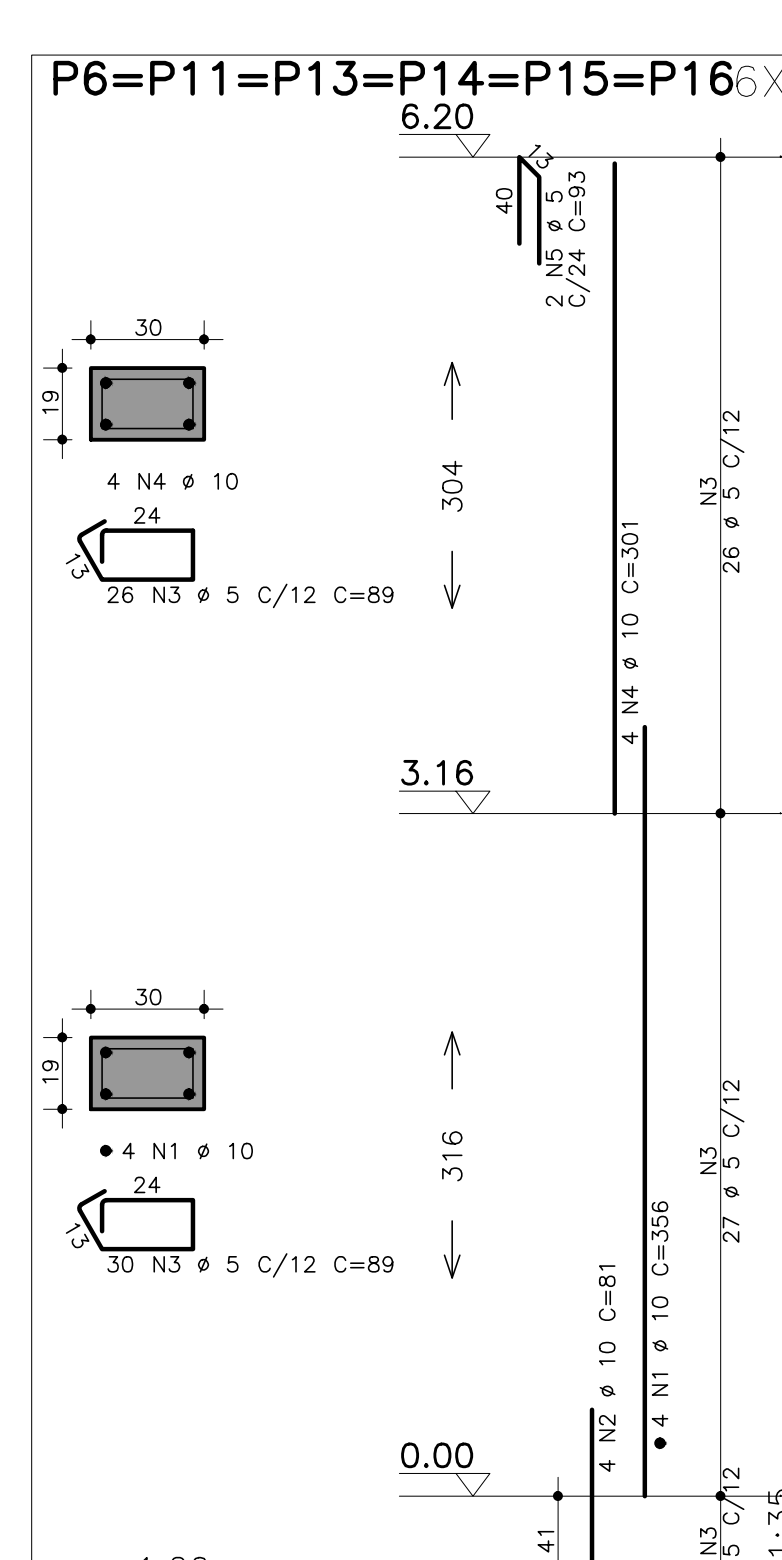
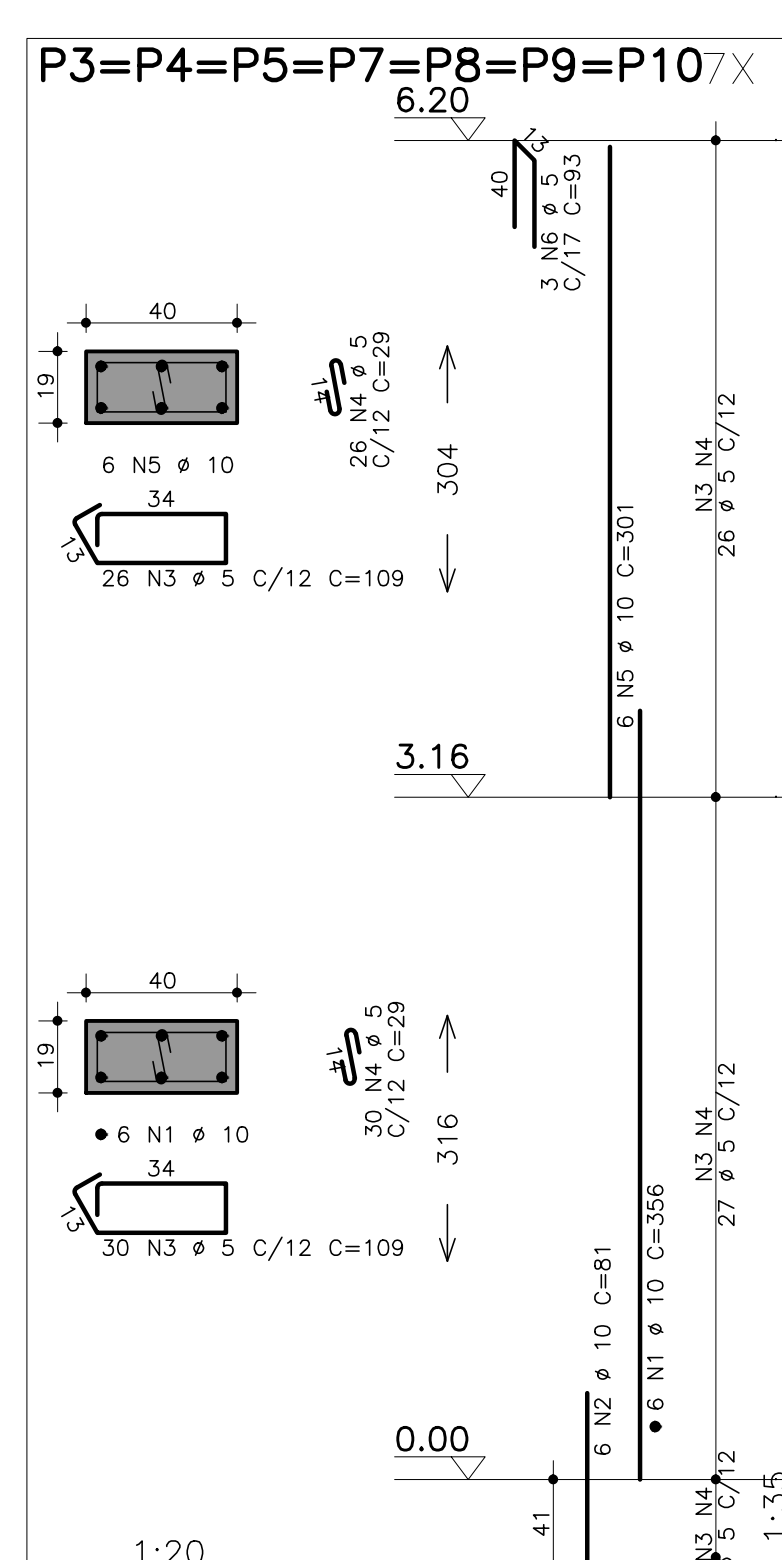
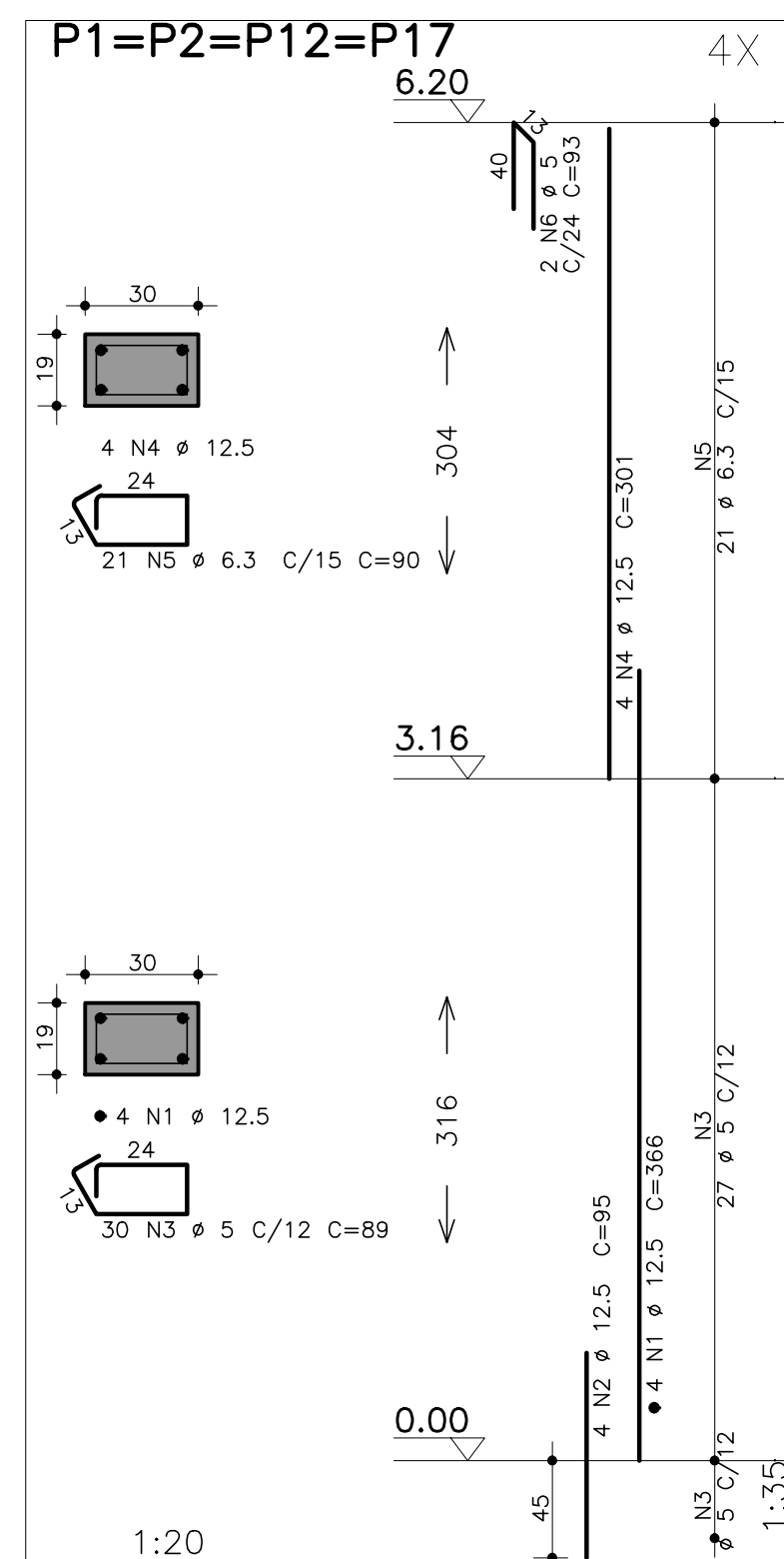


3 N1 8 C/20 C=234



4 N2 8 10 C=199

4 N3 Ø 10 C=203



Technical drawing of a sewerage network layout. The main sewer line runs horizontally across the top, with manholes B1, B101, B3, B4, and B5. The drawing shows various pipe segments with specifications such as N16, C/17, N18, C/17, N19, C/17, N20, C/17, N21, C/17, N22, C/17, N23, C/17, N24, C/17, N25, C/17, N26, C/17, N27, C/17, N28, C/17, N29, C/17, N30, C/17, N31, C/17, N32, C/17, N33, C/17, N34, C/17, N35, C/17, N36, C/17, N37, C/17, N38, C/17, N39, C/17, N40, C/17, N41, C/17, N42, C/17, N43, C/17, N44, C/17, N45, C/17, N46, C/17, N47, C/17, N48, C/17, N49, C/17, N50, C/17, N51, C/17, N52, C/17, N53, C/17, N54, C/17, N55, C/17, N56, C/17, N57, C/17, N58, C/17, N59, C/17, N60, C/17, N61, C/17, N62, C/17, N63, C/17, N64, C/17, N65, C/17, N66, C/17, N67, C/17, N68, C/17, N69, C/17, N70, C/17, N71, C/17, N72, C/17, N73, C/17, N74, C/17, N75, C/17, N76, C/17, N77, C/17, N78, C/17, N79, C/17, N80, C/17, N81, C/17, N82, C/17, N83, C/17, N84, C/17, N85, C/17, N86, C/17, N87, C/17, N88, C/17, N89, C/17, N90, C/17, N91, C/17, N92, C/17, N93, C/17, N94, C/17, N95, C/17, N96, C/17, N97, C/17, N98, C/17, N99, C/17, N100, C/17, N101, C/17, N102, C/17, N103, C/17, N104, C/17, N105, C/17, N106, C/17, N107, C/17, N108, C/17, N109, C/17, N110, C/17, N111, C/17, N112, C/17, N113, C/17, N114, C/17, N115, C/17, N116, C/17, N117, C/17, N118, C/17, N119, C/17, N120, C/17, N121, C/17, N122, C/17, N123, C/17, N124, C/17, N125, C/17, N126, C/17, N127, C/17, N128, C/17, N129, C/17, N130, C/17, N131, C/17, N132, C/17, N133, C/17, N134, C/17, N135, C/17, N136, C/17, N137, C/17, N138, C/17, N139, C/17, N140, C/17, N141, C/17, N142, C/17, N143, C/17, N144, C/17, N145, C/17, N146, C/17, N147, C/17, N148, C/17, N149, C/17, N150, C/17, N151, C/17, N152, C/17, N153, C/17, N154, C/17, N155, C/17, N156, C/17, N157, C/17, N158, C/17, N159, C/17, N160, C/17, N161, C/17, N162, C/17, N163, C/17, N164, C/17, N165, C/17, N166, C/17, N167, C/17, N168, C/17, N169, C/17, N170, C/17, N171, C/17, N172, C/17, N173, C/17, N174, C/17, N175, C/17, N176, C/17, N177, C/17, N178, C/17, N179, C/17, N180, C/17, N181, C/17, N182, C/17, N183, C/17, N184, C/17, N185, C/17, N186, C/17, N187, C/17, N188, C/17, N189, C/17, N190, C/17, N191, C/17, N192, C/17, N193, C/17, N194, C/17, N195, C/17, N196, C/17, N197, C/17, N198, C/17, N199, C/17, N200, C/17, N201, C/17, N202, C/17, N203, C/17, N204, C/17, N205, C/17, N206, C/17, N207, C/17, N208, C/17, N209, C/17, N210, C/17, N211, C/17, N212, C/17, N213, C/17, N214, C/17, N215, C/17, N216, C/17, N217, C/17, N218, C/17, N219, C/17, N220, C/17, N221, C/17, N222, C/17, N223, C/17, N224, C/17, N225, C/17, N226, C/17, N227, C/17, N228, C/17, N229, C/17, N230, C/17, N231, C/17, N232, C/17, N233, C/17, N234, C/17, N235, C/17, N236, C/17, N237, C/17, N238, C/17, N239, C/17, N240, C/17, N241, C/17, N242, C/17, N243, C/17, N244, C/17, N245, C/17, N246, C/17, N247, C/17, N248, C/17, N249, C/17, N250, C/17, N251, C/17, N252, C/17, N253, C/17, N254, C/17, N255, C/17, N256, C/17, N257, C/17, N258, C/17, N259, C/17, N260, C/17, N261, C/17, N262, C/17, N263, C/17, N264, C/17, N265, C/17, N266, C/17, N267, C/17, N268, C/17, N269, C/17, N270, C/17, N271, C/17, N272, C/17, N273, C/17, N274, C/17, N275, C/17, N276, C/17, N277, C/17, N278, C/17, N279, C/17, N280, C/17, N281, C/17, N282, C/17, N283, C/17, N284, C/17, N285, C/17, N286, C/17, N287, C/17, N288, C/17, N289, C/17, N290, C/17, N291, C/17, N292, C/17, N293, C/17, N294, C/17, N295, C/17, N296, C/17, N297, C/17, N298, C/17, N299, C/17, N300, C/17, N301, C/17, N302, C/17, N303, C/17, N304, C/17, N305, C/17, N306, C/17, N307, C/17, N308, C/17, N309, C/17, N310, C/17, N311, C/17, N312, C/17, N313, C/17, N314, C/17, N315, C/17, N316, C/17, N317, C/17, N318, C/17, N319, C/17, N320, C/17, N321, C/17, N322, C/17, N323, C/17, N324, C/17, N325, C/17, N326, C/17, N327, C/17, N328, C/17, N329, C/17, N330, C/17, N331, C/17, N332, C/17, N333, C/17, N334, C/17, N335, C/17, N336, C/17, N337, C/17, N338, C/17, N339, C/17, N340, C/17, N341, C/17, N342, C/17, N343, C/17, N344, C/17, N345, C/17, N346, C/17, N347, C/17, N348, C/17, N349, C/17, N350, C/17, N351, C/17, N352, C/17, N353, C/17, N354, C/17, N355, C/17, N356, C/17, N357, C/17, N358, C/17, N359, C/17, N360, C/17, N361, C/17, N362, C/17, N363, C/17, N364, C/17, N365, C/17, N366, C/17, N367, C/17, N368, C/17, N369, C/17, N370, C/17, N371, C/17, N372, C/17, N373, C/17, N374, C/17, N375, C/17, N376, C/17, N377, C/17, N378, C/17, N379, C/17, N380, C/17, N381, C/17, N382, C/17, N383, C/17, N384, C/17, N385, C/17, N386, C/17, N387, C/17, N388, C/17, N389, C/17, N390, C/17, N391, C/17, N392, C/17, N393, C/17, N394, C/17, N395, C/17, N396, C/17, N397, C/17, N398, C/17, N399, C/17, N400, C/17, N401, C/17, N402, C/17, N403, C/17, N404, C/17, N405, C/17, N406, C/17, N407, C/17, N408, C/17, N409, C/17, N410, C/17, N411, C/17, N412, C/17, N413, C/17, N414, C/17, N415, C/17, N416, C/17, N417, C/17, N418, C/17, N419, C/17, N420, C/17, N421, C/17, N422, C/17, N423, C/17, N424, C/1

[illegible][illegible][illegible]

VB9

19/40

19/40

2 N1 10 mm C=845

48

20

15

Corte A

2 N1 10

2 N1 10

42 N4 5 C=109

VB10

19/40

19/40

N4 5°/17
22 ø 10 (360)
2 ø 10

N5 5°/17
20 ø 10 (330)
2 ø 10

B15

B9

B5

2 N1 ø 10 C=845

2 N2 ø 10 C=400

2 N3 ø 10 C=320

160

164

48

Corte A

19/40

42 N4 ø 5 C=109

VBT

Dimensions and specifications:

- Top flange width: 19/40
- Web height: 854
- Bottom flange width: 720
- Section A-A details:
 - Top flange thickness: 2 # 16
 - Web thickness: 2 N1 ø 10 C=569
 - Bottom flange thickness: 2 # 16
 - Bottom flange reinforcement: 2 N3 ø 10 C=395
- Other labels: B16, B10, B2, 43 N4 ø 5 C=109

[illegible]

PREFEITURA MUNICIPAL DE SANTA LUZIA
ADM. DELEGADO CHRISTIANO XAVIER

CONTEÚDO DA PRÁTICA

E.M. DAGMAR BARBOSA DE SOUZA

PROJETO DE FUNDACÕES E ESTRUTURAS

ARMAÇÕES DE BLOCOS, PILARES E BALDRAMES	FOLHA: 01/04	REVISÃO 1
---	-----------------	--------------