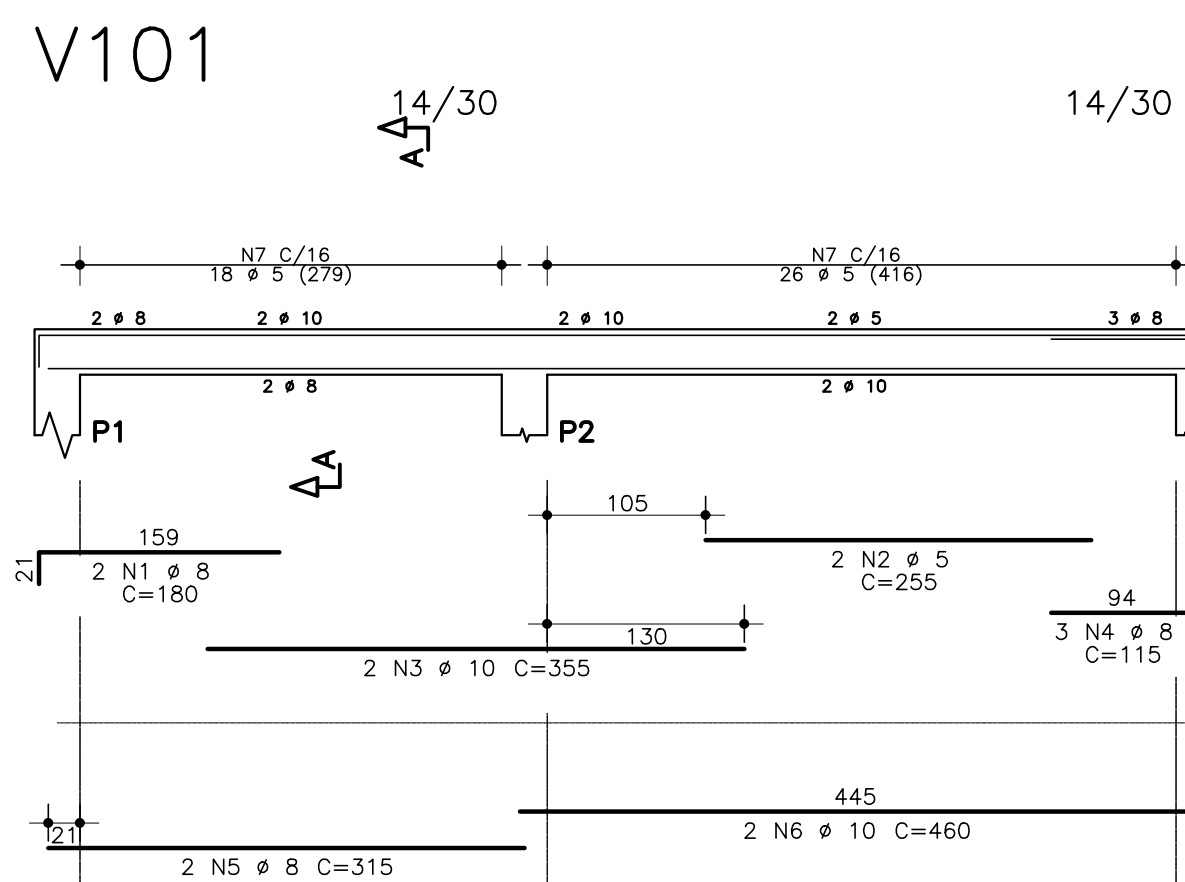
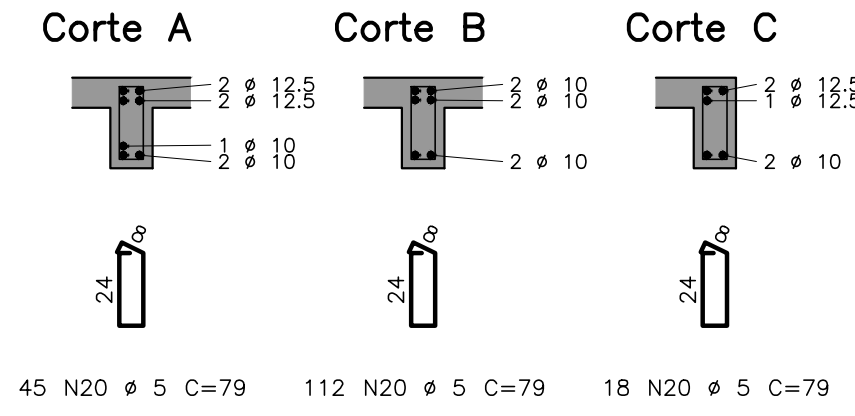
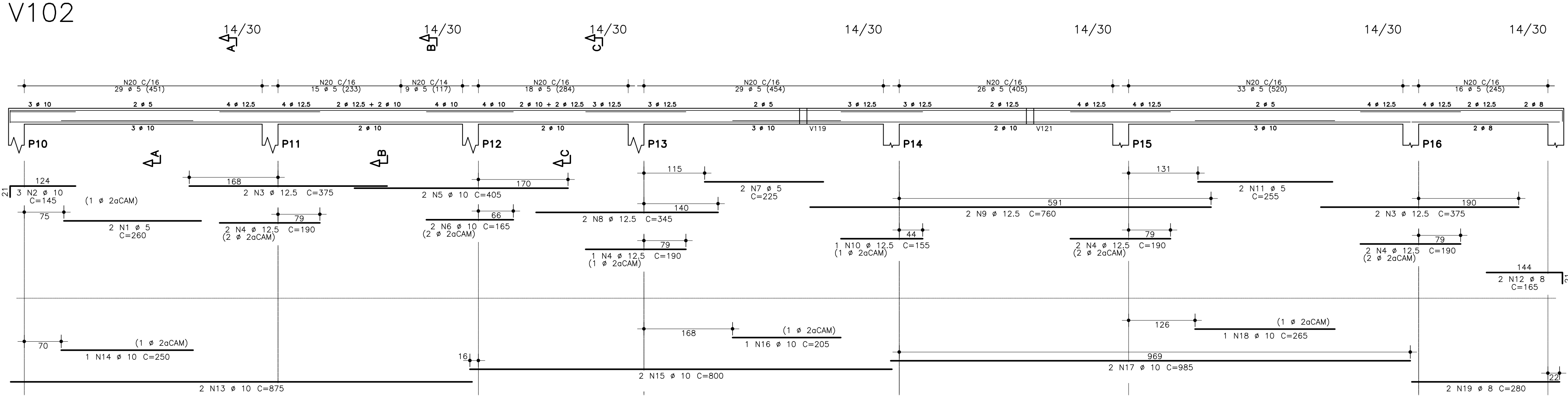


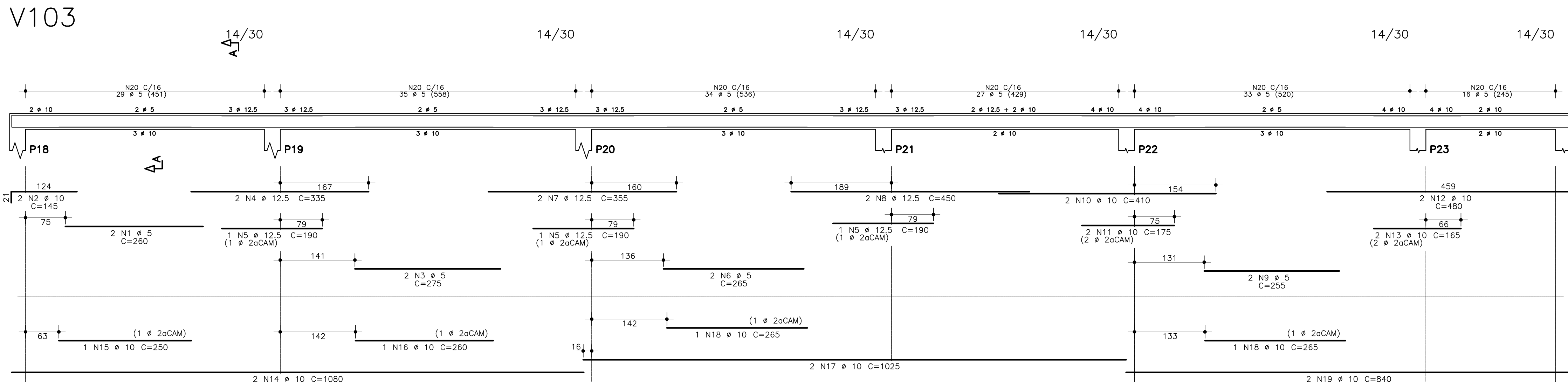
## V101



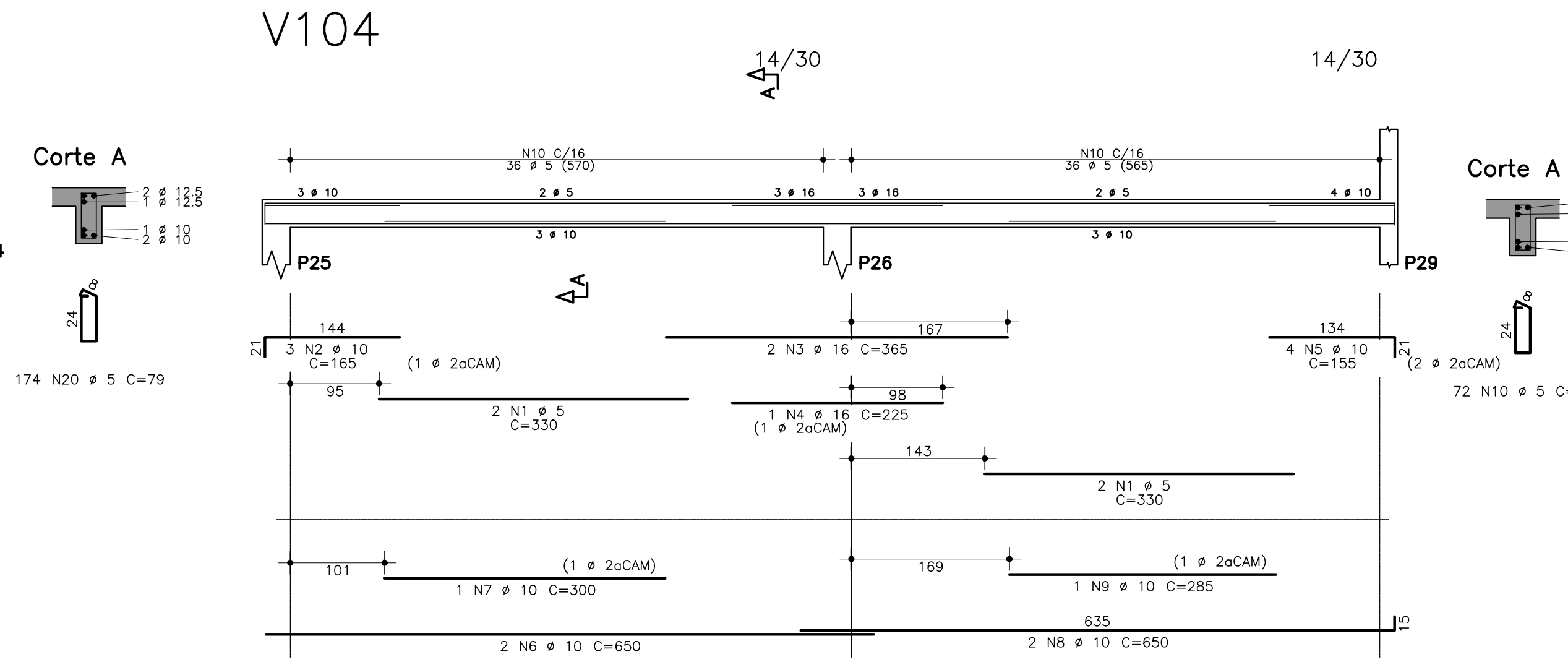
## V102



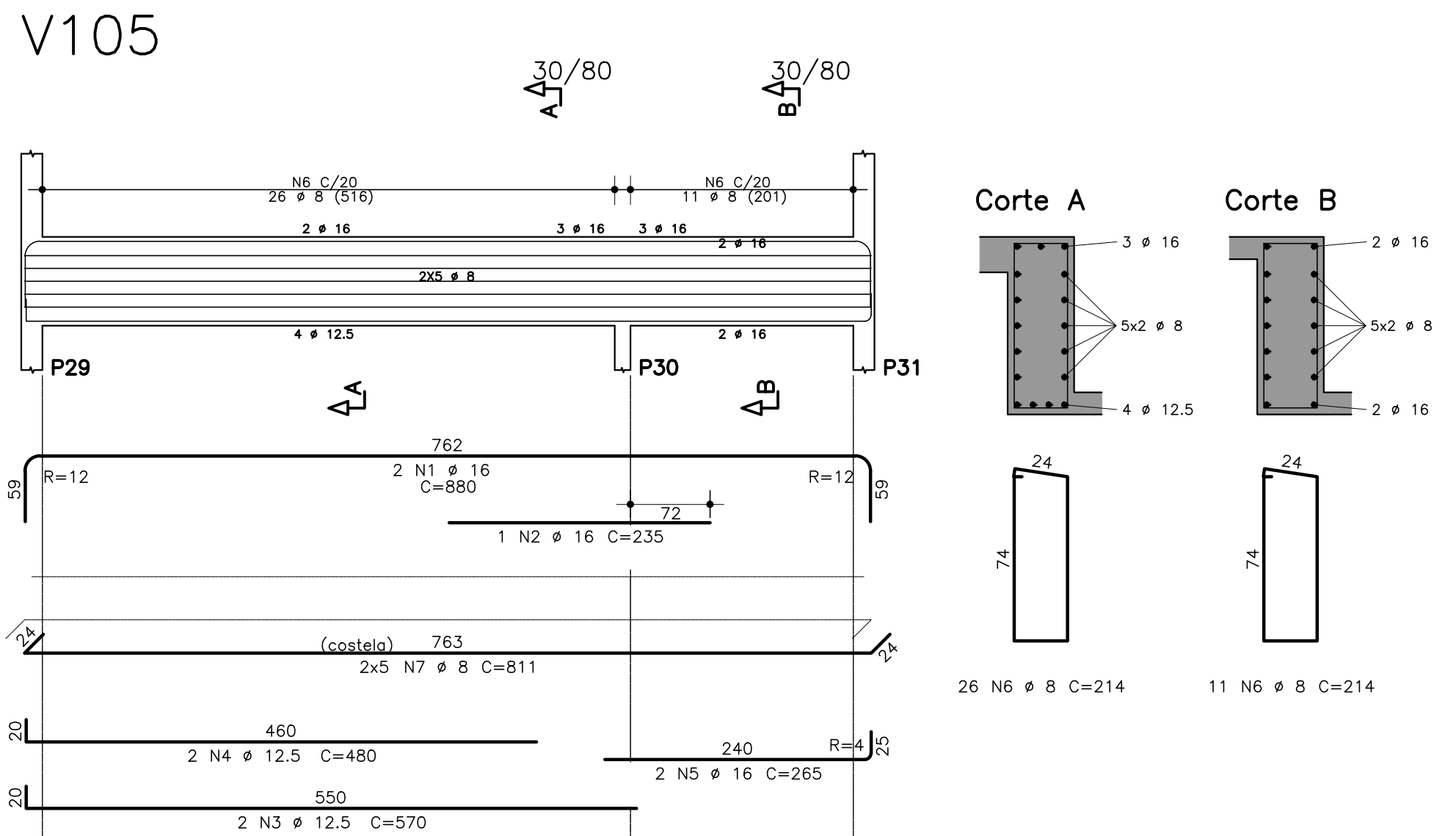
## V103



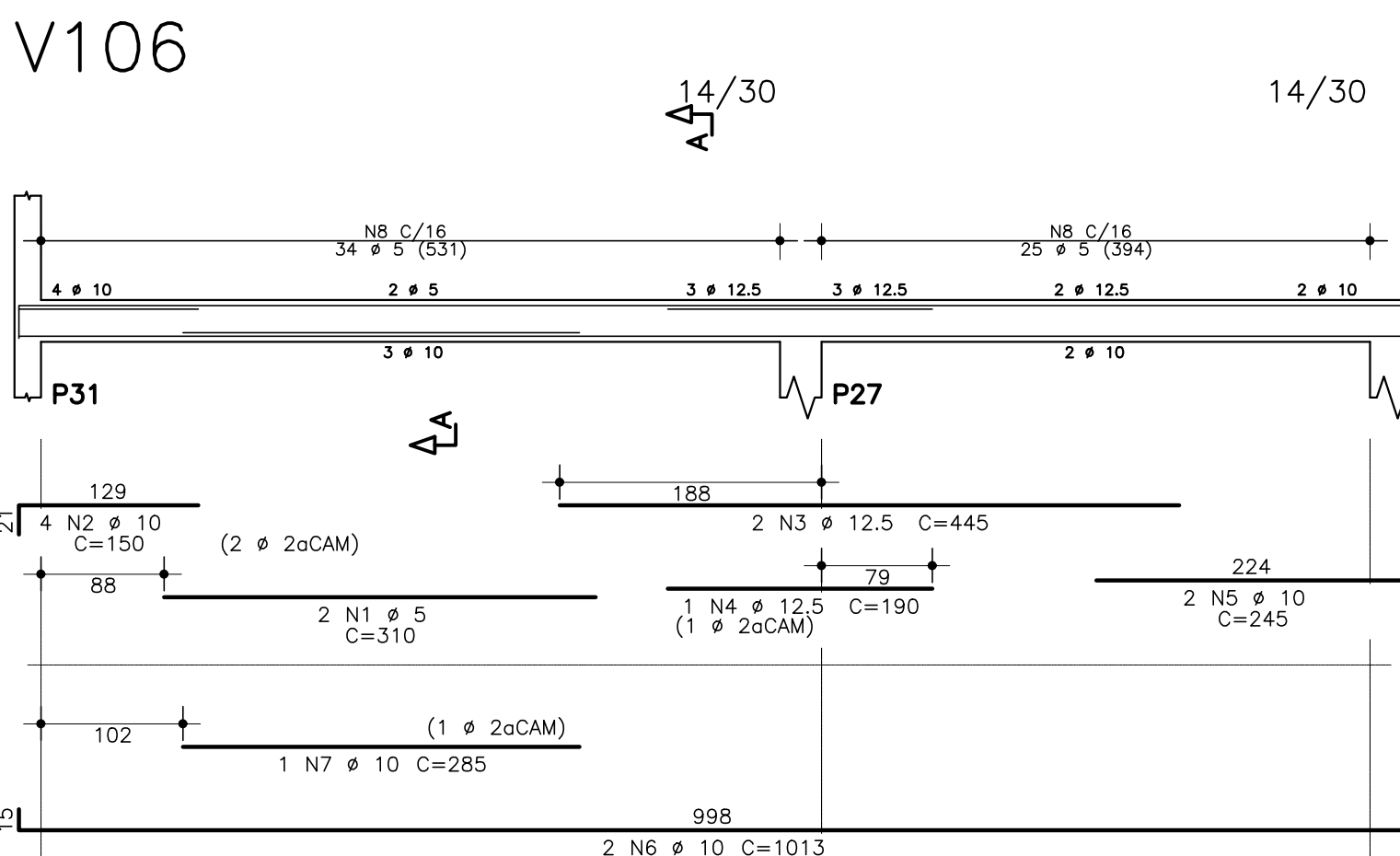
## V104



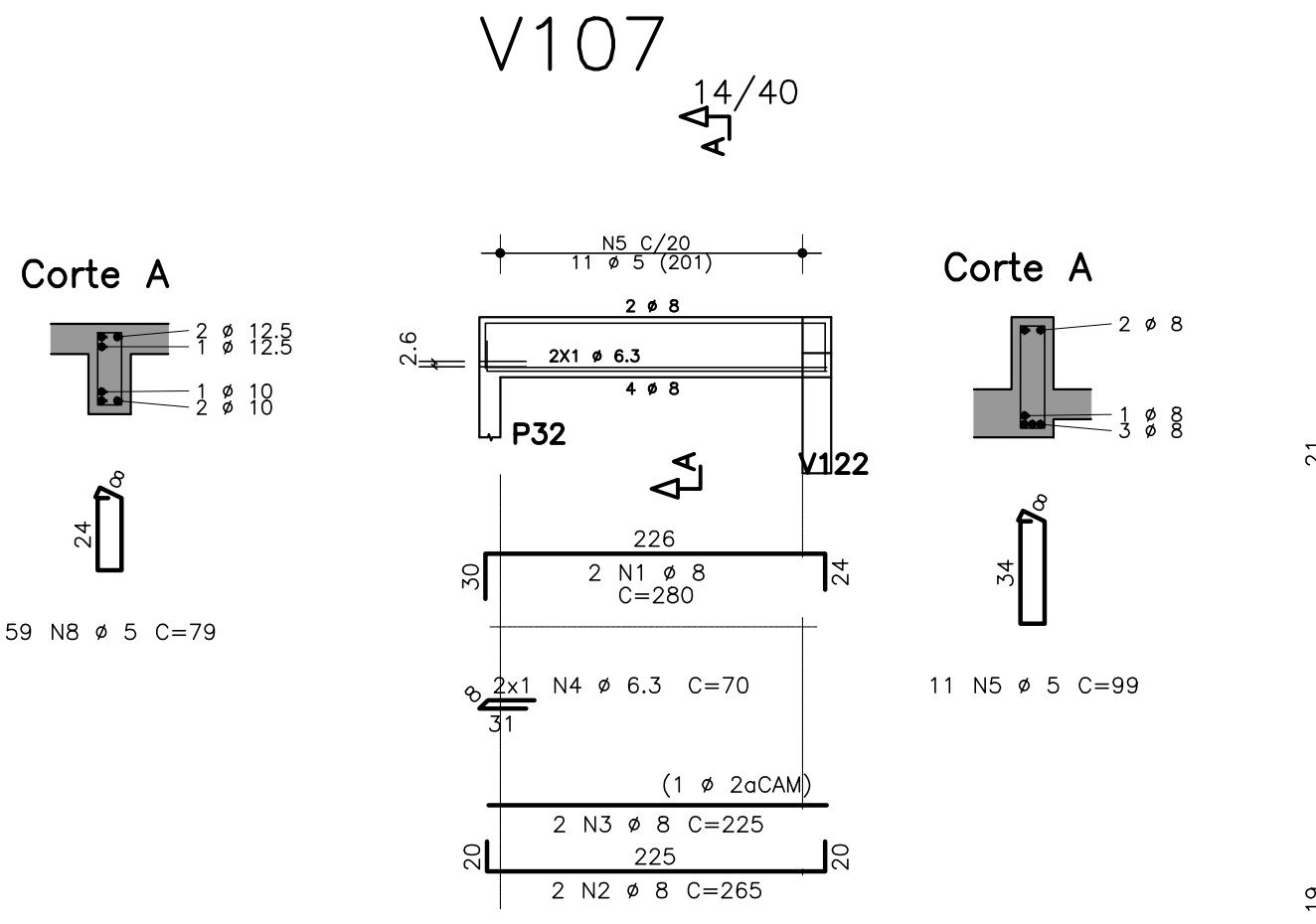
## V105



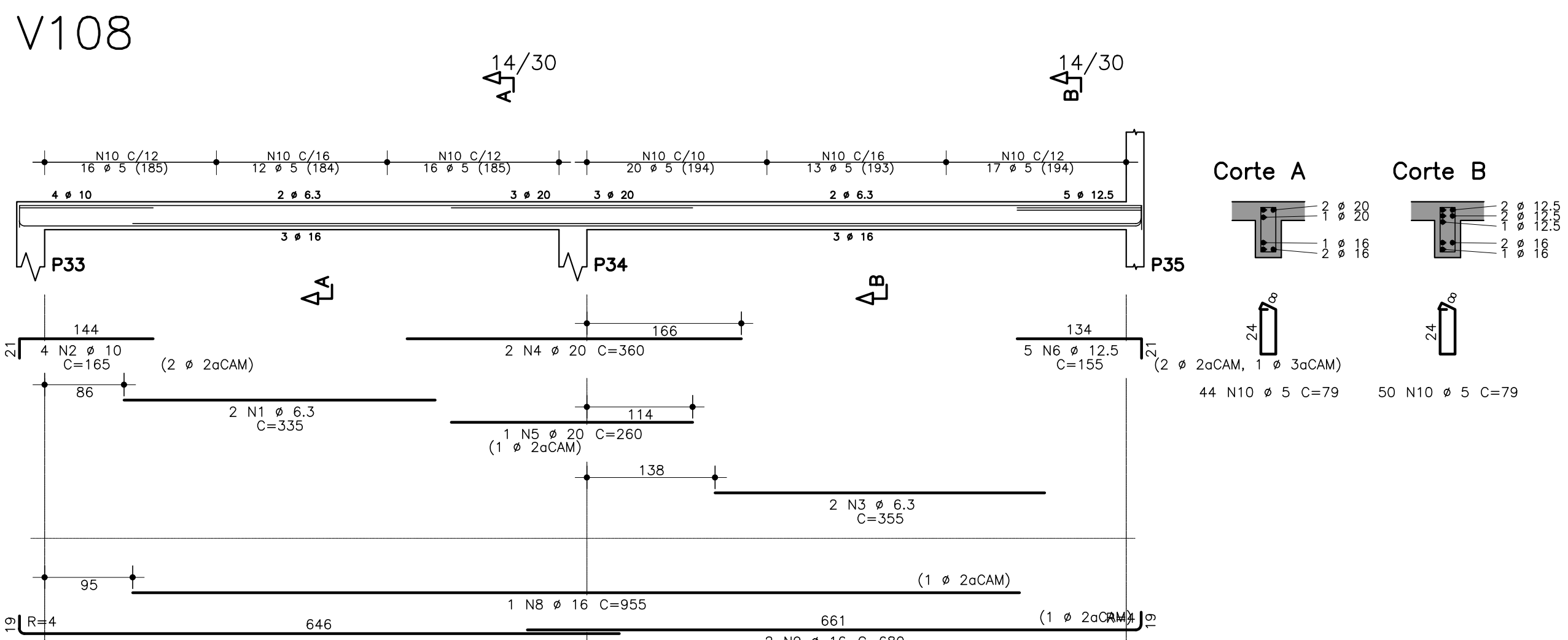
## V106



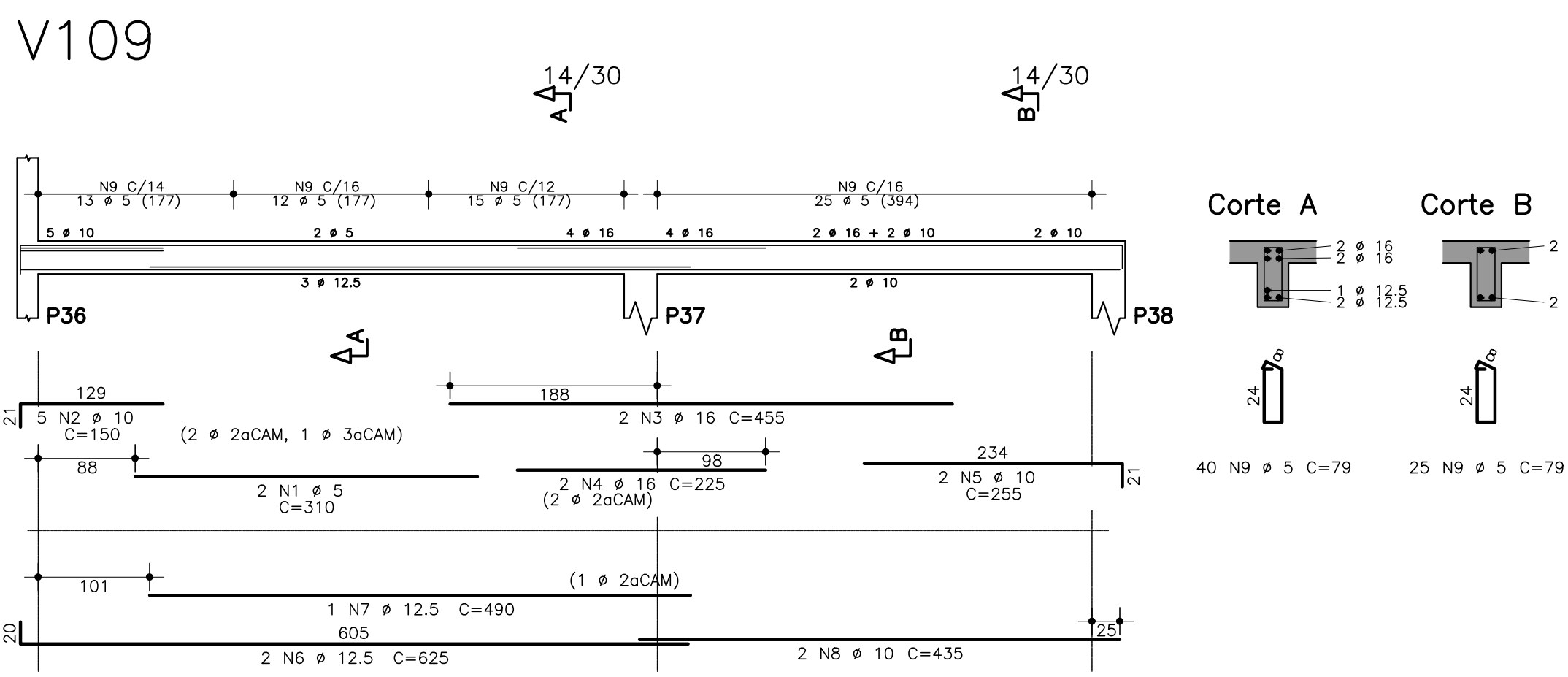
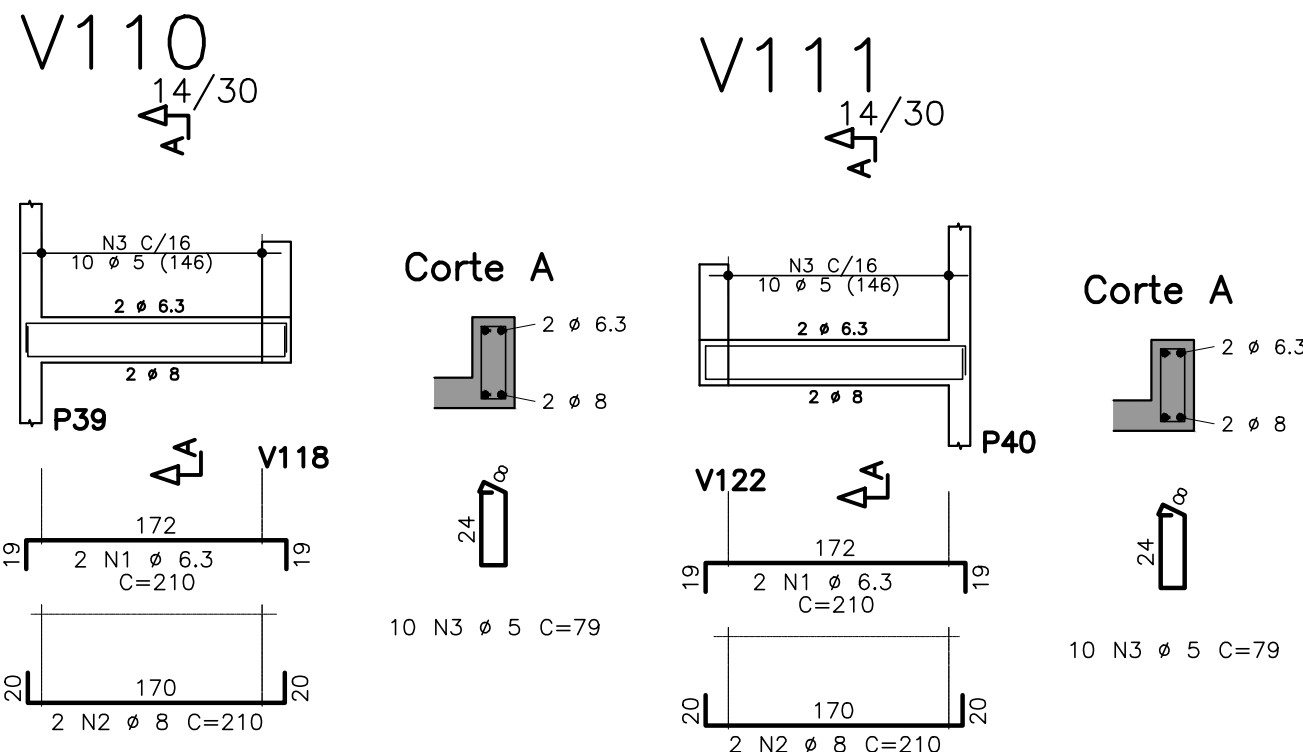
## V107



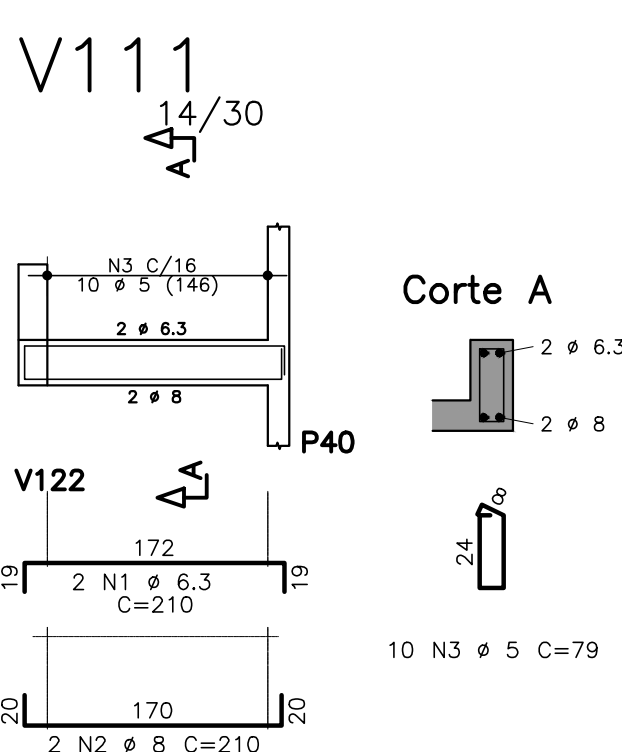
## V108



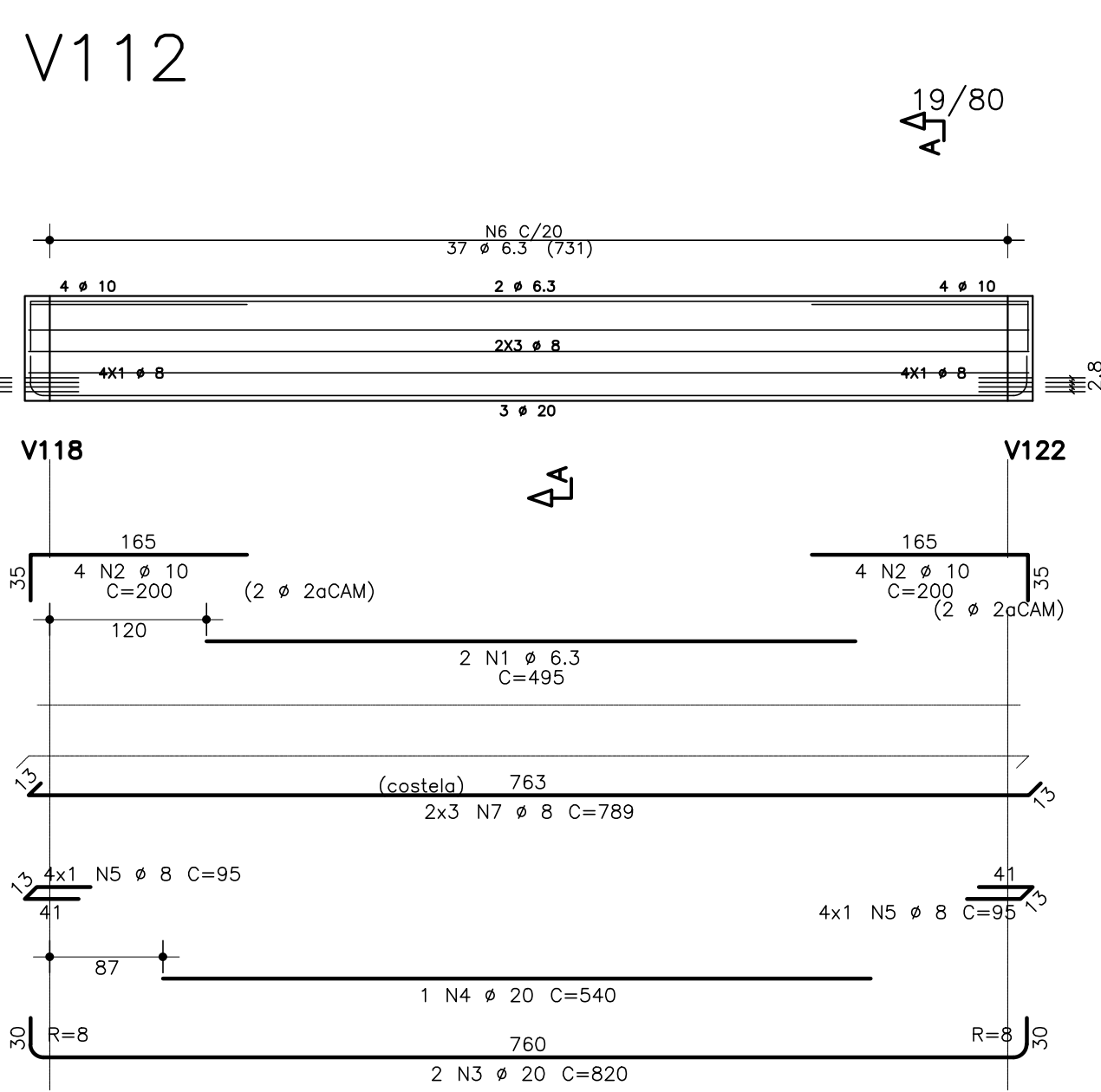
## V109

V1 10  
14/

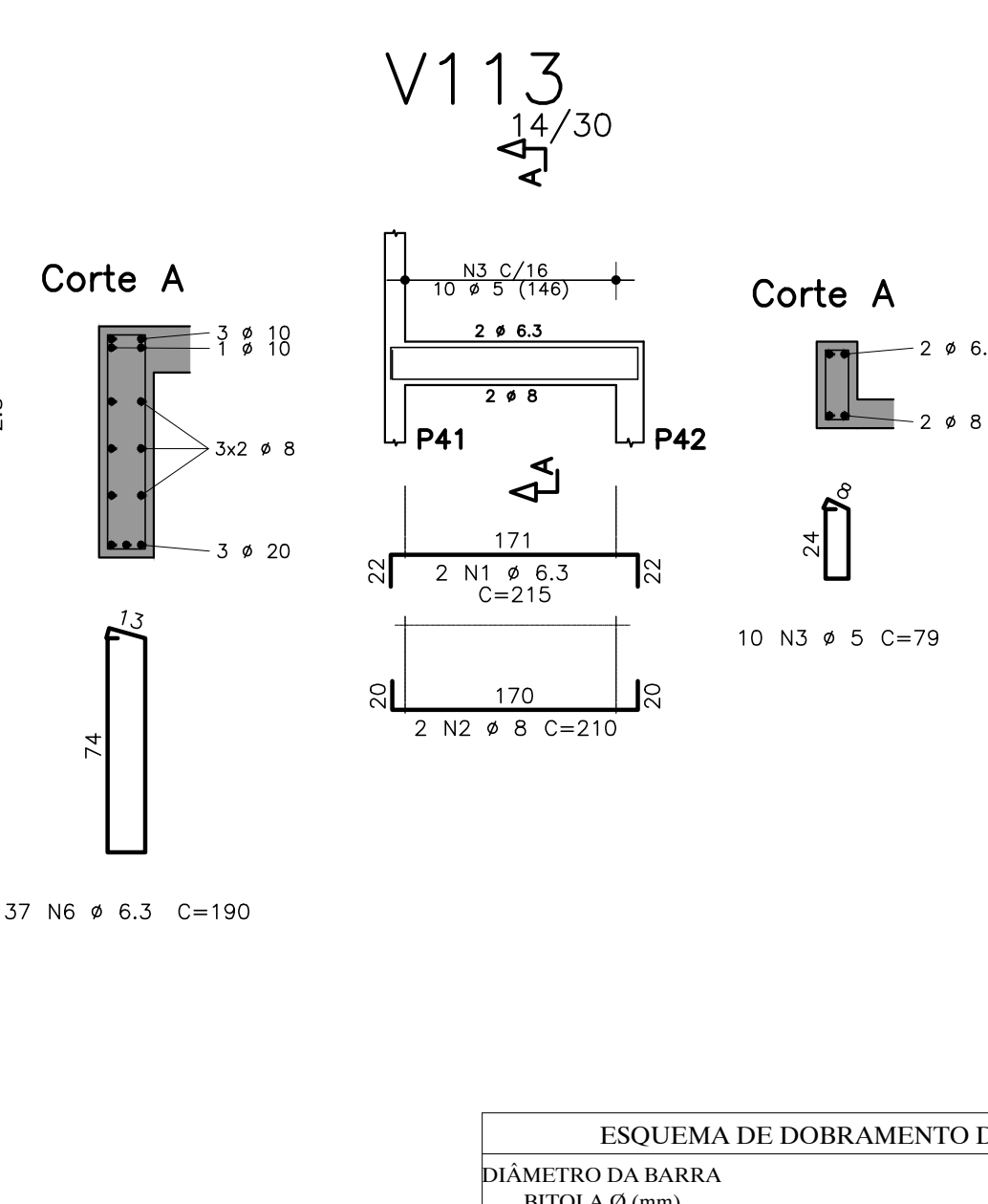
V1 1 1



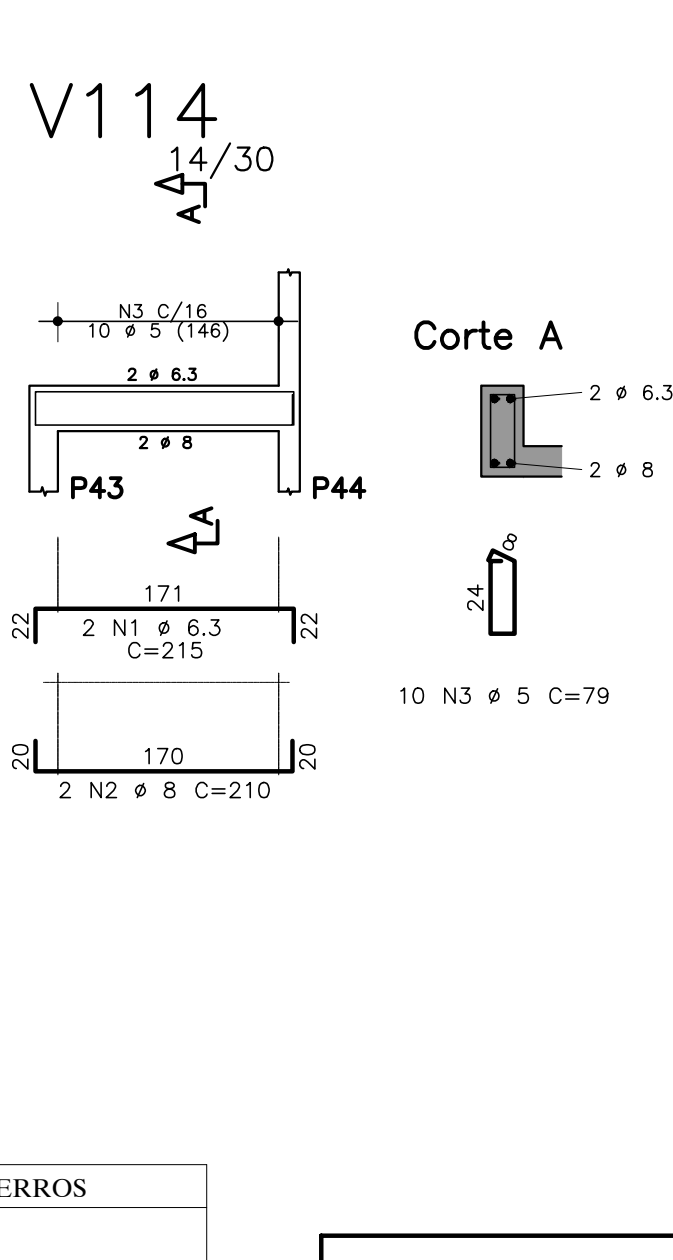
## V112



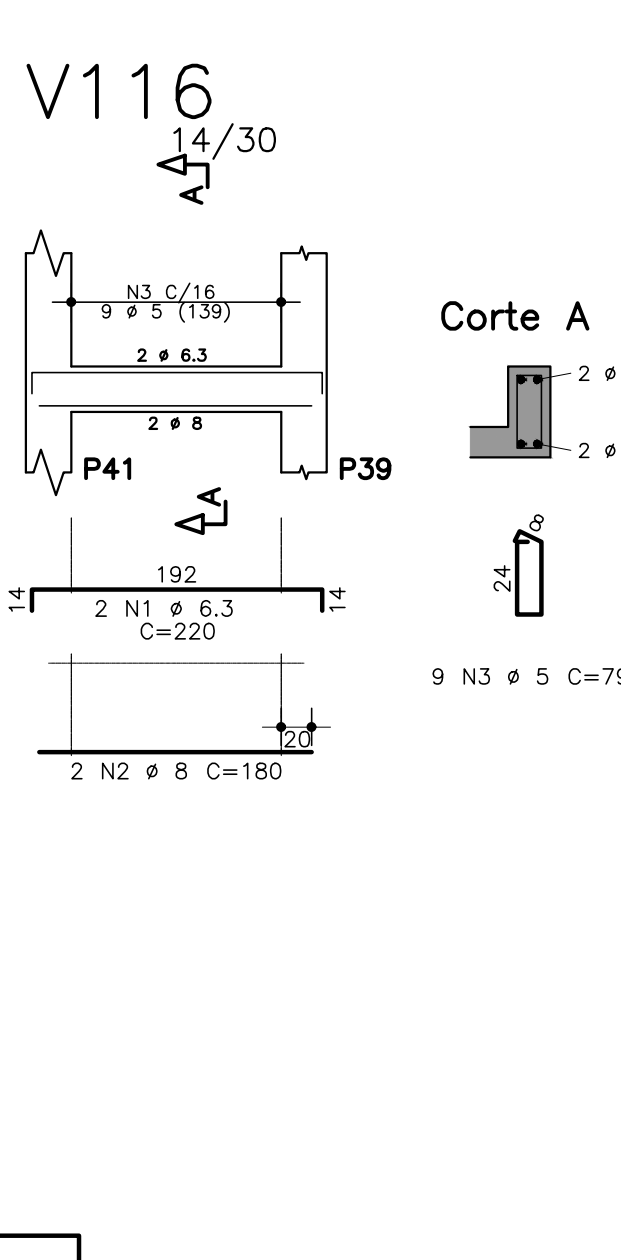
## V113



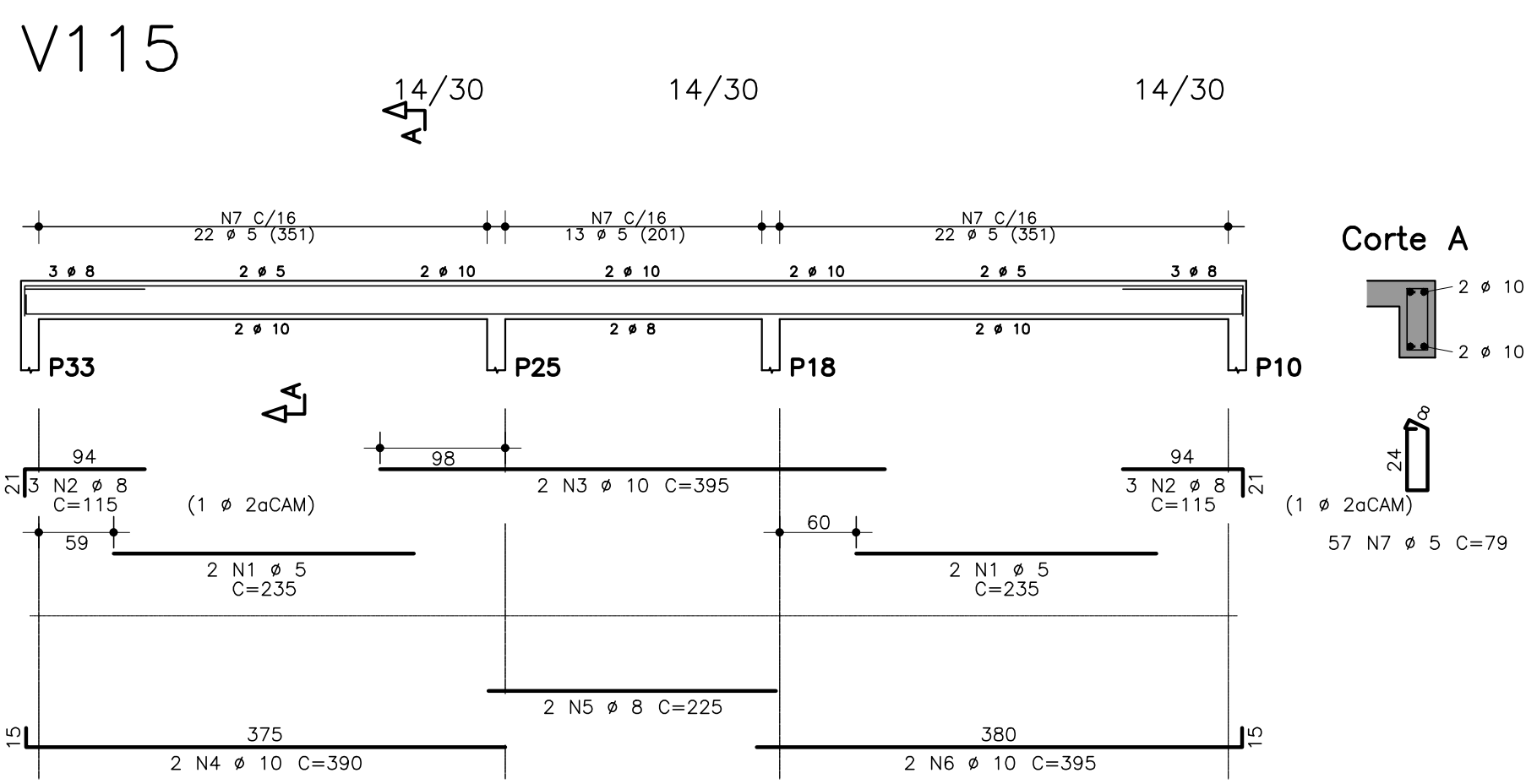
1 1 1 1



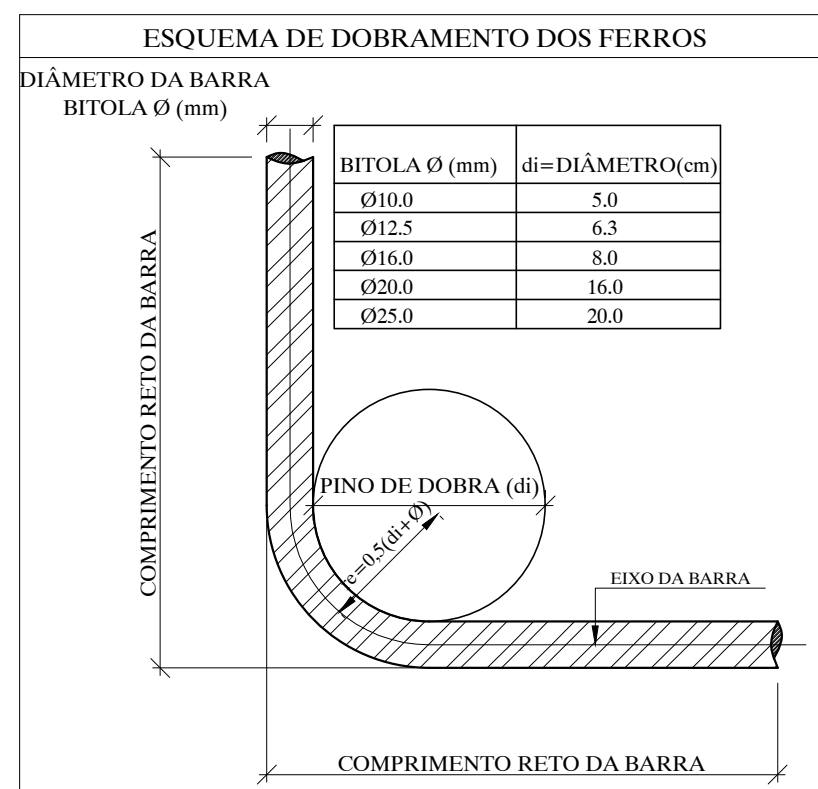
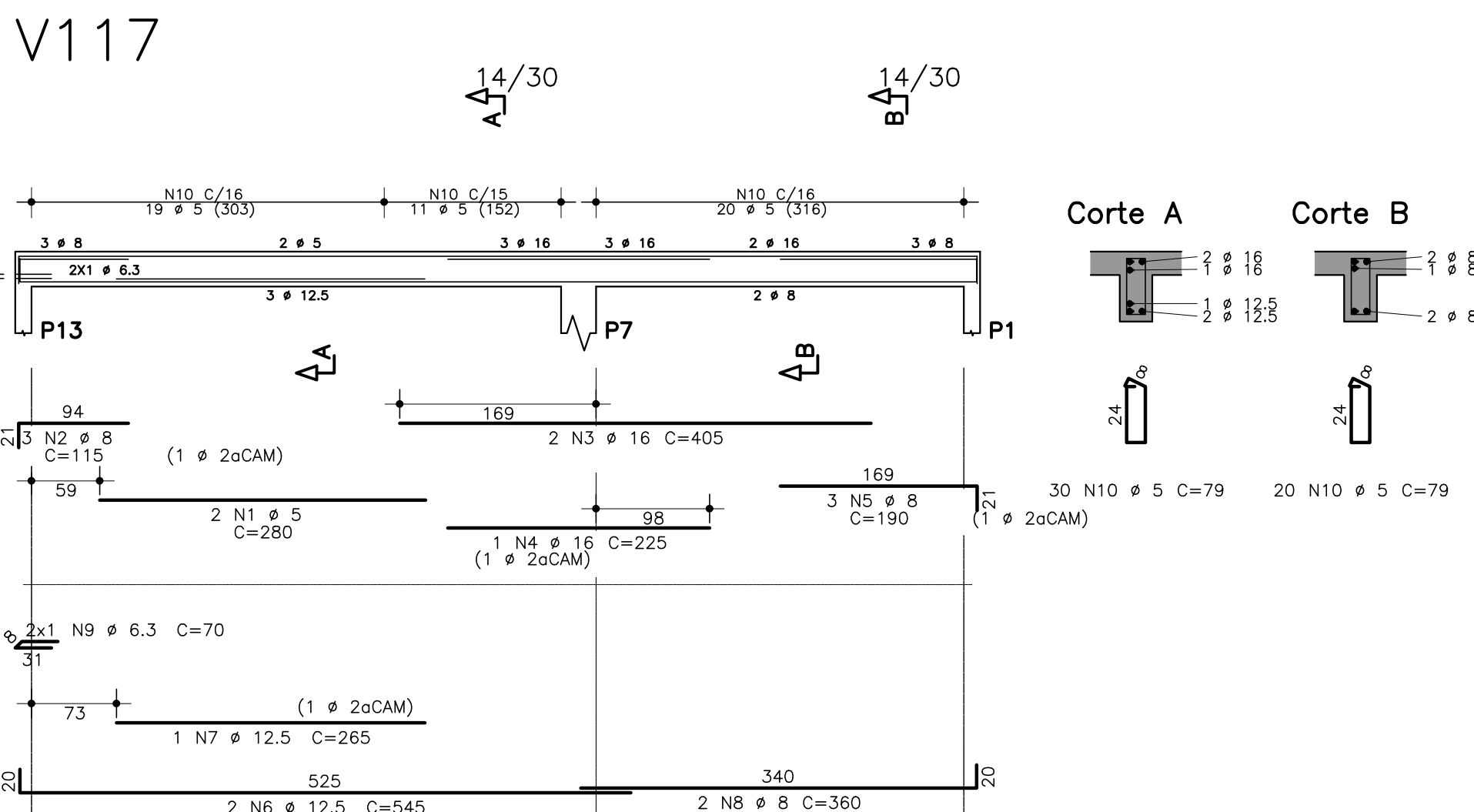
## V1 16



V115



## V117



ESCALA

VIGAS:  
-VISTA 1:50  
-CORTE 1:25

LAJES:  
-TERREO 1:75  
-COBERTURA 1:50

	ACO	POS	BIT (mm)	QUANT	COMPROMENTO	
					UNIT (cm)	TOTAL (cm)
V101	50A	1	8	2	180	360
	60B	2	5	2	175	1510
	50A	3	4	2	355	710
	50A	4	8	2	115	230
	50A	5	8	2	315	630
	60B	6	10	2	460	920
V102	60B	7	5	44	79	3476
	50A	2	10	2	260	520
	50A	3	12.5	2	145	435
	50A	4	12.5	7	190	1330
	50A	5	12.5	7	160	1520
	50A	6	10	2	165	330
	60B	7	8	2	225	450
	50A	8	12.5	2	345	690
	50A	9	12.5	2	760	1520
	50A	10	12.5	5	135	675
	60B	11	5	2	255	510
	50A	12	10	2	255	510
	50A	13	10	2	875	1750
	50A	14	10	2	250	500
	50A	15	10	2	800	1600
	50A	16	10	2	105	210
	50A	17	10	2	985	1970
	50A	18	10	1	265	265
	50A	19	10	2	280	560
	60B	20	5	175	79	13825
V103	60B	1	5	2	260	520
	50A	2	10	2	165	330
	60B	3	5	2	275	550
	50A	4	12.5	2	330	670
	50A	5	12.5	8	190	1520
	60B	6	5	2	265	530
	50A	7	12.5	2	305	610
	50A	8	12.5	2	450	900
	50A	9	5	2	175	350
	50A	10	10	2	410	820
	50A	11	10	2	155	310
	50A	12	10	2	480	960
	50A	13	10	2	250	500
	50A	14	10	2	1080	2160
	50A	15	10	1	250	250
	50A	16	10	2	260	520
	50A	17	10	2	1025	2050
	50A	18	10	2	165	330
	50A	19	10	2	840	1680
	60B	20	5	174	79	13746
V104	60B	1	5	4	330	1320
	50A	2	10	2	165	330
	50A	3	16	2	365	730
	50A	4	16	2	225	450
	50A	5	10	4	155	620
	60B	6	5	4	330	1320
	50A	7	10	1	300	300
	50A	8	10	1	650	1300
	50A	9	10	1	285	285
V105	60B	10	5	72	79	1668
	50A	1	16	2	880	1760
	50A	2	10	2	215	430
	50A	3	12.5	2	570	1140
	50A	4	12.5	2	265	530
V106	50A	5	16	2	265	530
	50A	6	10	2	114	228
	50A	7	8	10	611	8110
	60B	8	5	2	310	620
V107	50A	2	10	4	150	600
	50A	3	12.5	5	445	1112
	50A	4	12.5	1	190	190
	50A	5	10	2	1013	2028
	50A	6	7	2	285	285
	50A	7	8	2	460	79
V108	50A	1	8	2	280	560
	50A	2	8	2	265	530
	50A	3	8	2	225	450
	50A	4	6.3	2	70	140
	60B	5	5	11	99	1099
V109	50A	1	6.3	2	335	670
	50A	2	6.3	2	355	710
	50A	3	6.3	2	360	720
	50A	5	20	1	260	260
	50A	6	12.5	5	150	750
	50A	7	16	30	665	1995
V110	50A	8	16	1	955	955
	50A	9	16	1	680	680
	60B	10	5	94	79	7426
	60B	1	5	2	310	620
	50A	2	10	2	150	300
	50A	3	16	5	405	910
V111	50A	4	20	2	225	450
	50A	5	10	2	235	470
	50A	6	12.5	2	625	1250
	50A	7	12.5	2	435	870
	60B	8	5	65	79	5135
	50A	1	6.3	2	210	420
V112	50A	2	6.3	2	210	420
	60B	3	5	10	79	790
	50A	1	6.3	2	210	420
V113	50A	2	6.3	2	210	420
	50A	3	6.3	2	210	420
	50A	4	20	1	540	540
	50A	5	9	8	95	760
	50A	6	6.3	37	190	7030
	50A	7	8	6	789	4734
V114	50A	1	6.3	2	215	430
	50A	2	8	2	210	420
	60B	3	5	10	79	790
V115	50A	1	6.3	2	215	430
	50A	2	8	2	210	420
	50A	3	5	10	79	790
	60B	1	5	4	235	940
	50A	2	8	6	115	690
	50A	3	10	2	395	790
V116	50A	4	10	2	390	780
	50A	5	8	2	225	450
	60B	6	5	2	395	790
	50A	7	5	57	79	4503
	50A	1	6.3	2	220	440
	60B	2	8	2	180	360
V117	50A	3	5	11	8	79
	60B	1	5	2	280	560
	50A	2	8	3	115	345
	50A	3	10	5	210	1050
	50A	4	16	1	225	225
	50A	5	10	2	235	470
V118	50A	6	12.5	2	145	1080
	50A	7	12.5	1	265	265
	50A	8	10	2	360	720
	50A	9	6.3	30	70	140
	60B	10	5	40	79	3950
	50A	11	5	2	280	560

RESUMO AÇO CA 50-60			
AÇO	BIT (mm)	COMPR (m)	PESO (kg)
60B	5	755	116
50A	6,3	118	29
50A	8	301	119
50A	10	334	206
50A	12,5	151	145
50A	16	95	150
50A	20	32	78
Peso Total	60B =		116 kg
Peso Total	50A =		727 kg

REV.	DATA	DESCRIÇÃO	SECRETARIA MUNICIPAL DE OBRAS DEPARTAMENTO DE ENGENHARIA E ARQUITETURA	
00	28/05/21	EMISSION INICIAL	SECRETÁRIO DE OBRAS	BRUNO MÁRCIO MOREIRA ALMEIDA
			RESPONSÁVEL TÉCNICO	HUGO KENJI INATOMI CREA/SP 5063373661 D



PREFEITURA MUNICIPAL DE SANTA LUZIA  
ADM. DELEGADO CHRISTIANO XAVIER

NÚMERO 000	DISCIPLINA ESTRUTURA	ETAPA PROJETO EXECUTIVO	DATA 28/05/2020
CONTEÚDO DA FRANCHA UNIDADE BÁSICA DE SAÚDE - NOVO CENTRO ARMAÇÃO - VIGAS DA COBERTURA			FOLHA 09/11
			REVISÃO 00