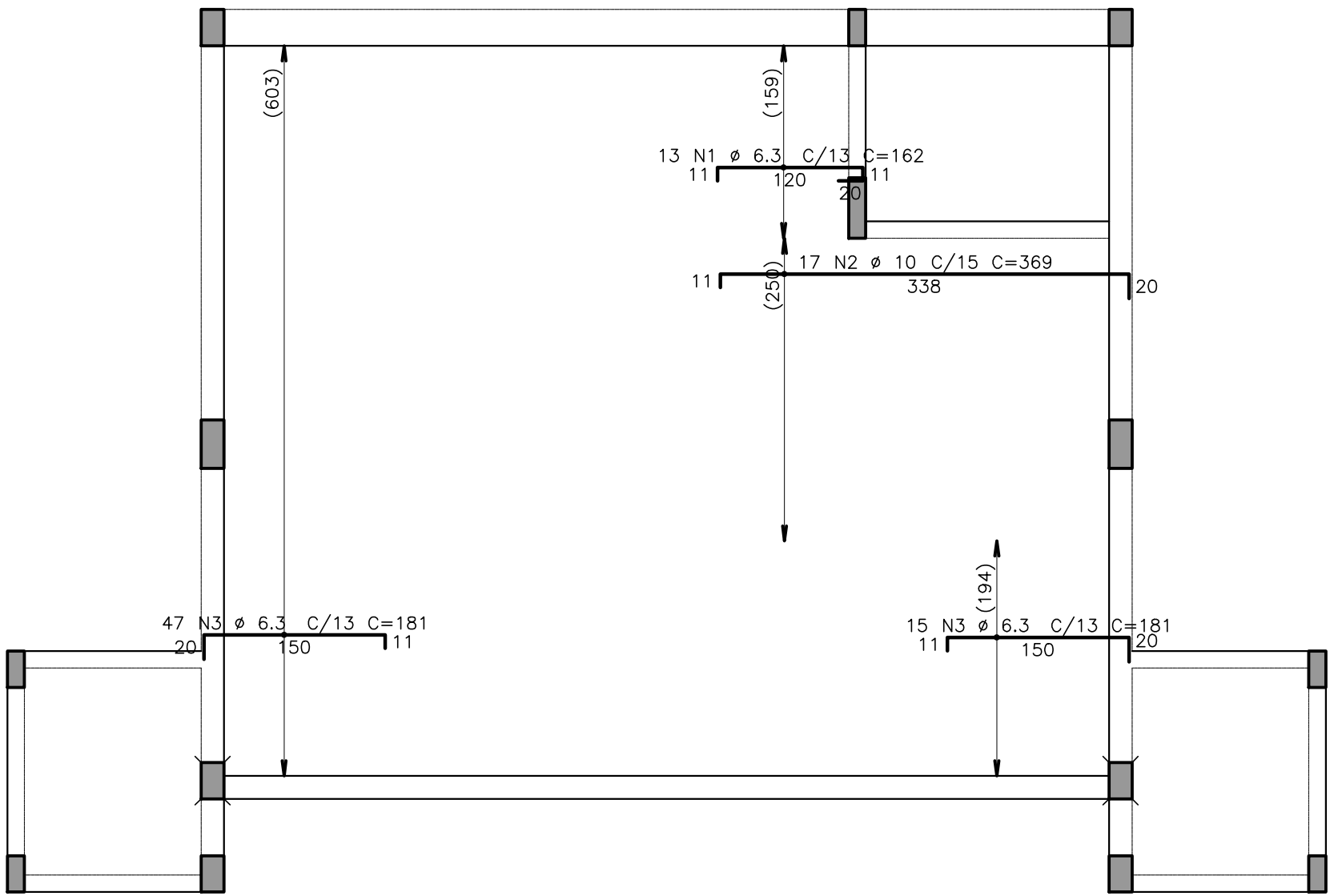
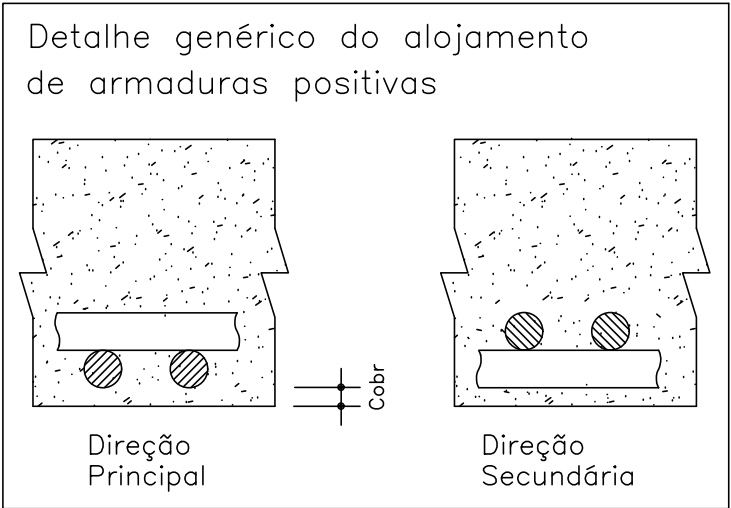
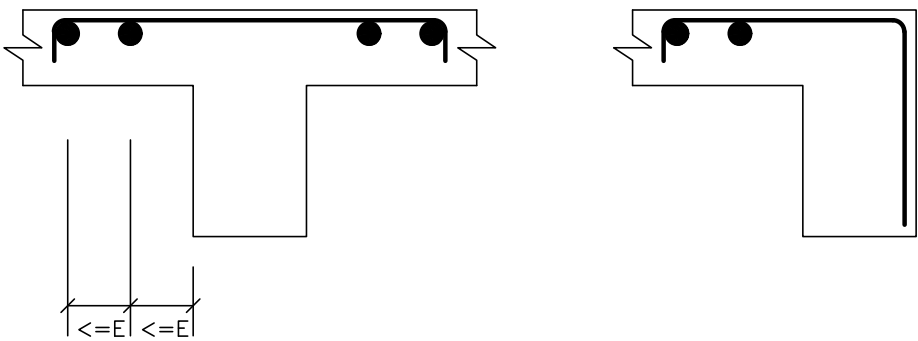


LAJE DO RESERVATORIO – Armadura negativa principal

1X

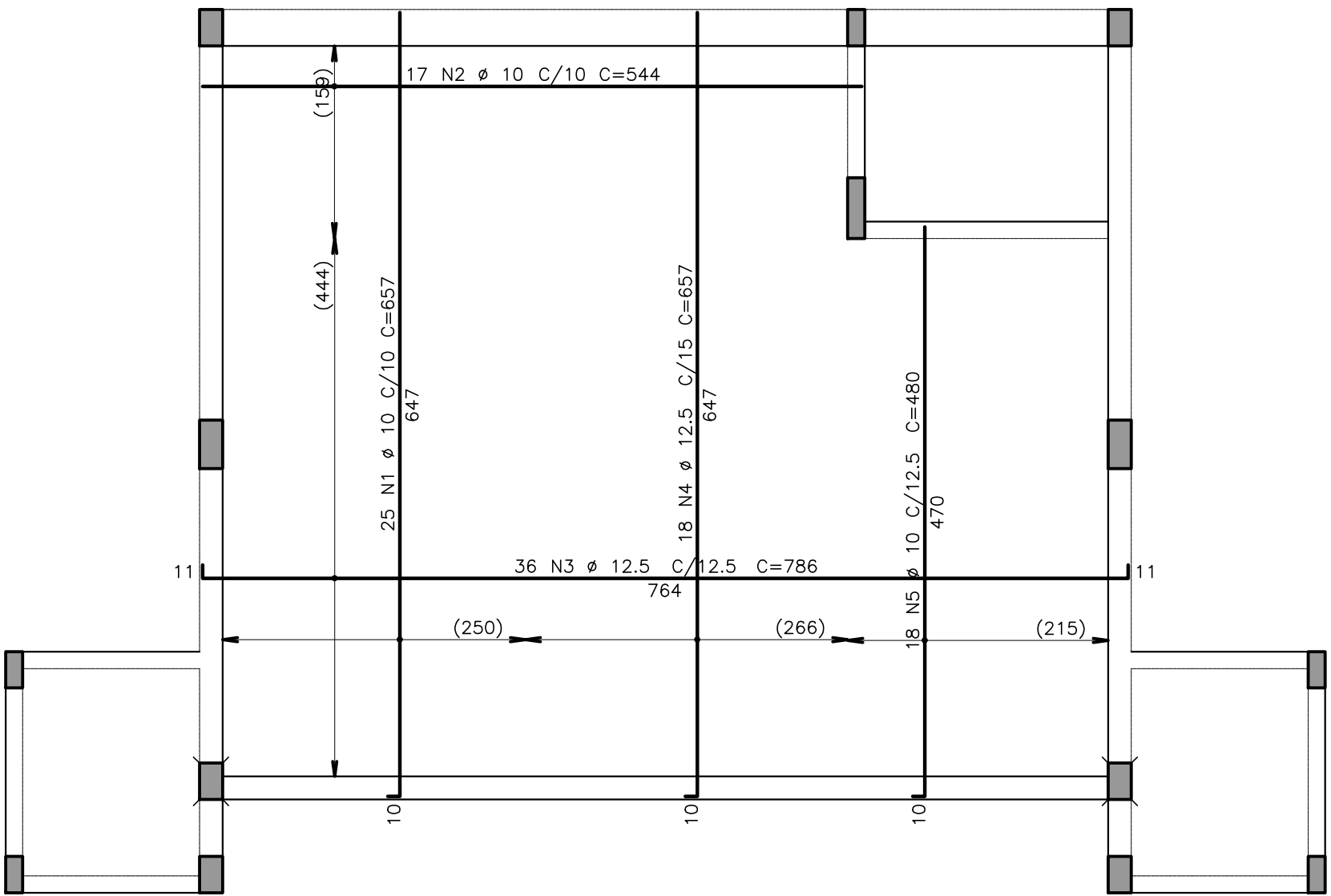


DETALHE TÍPICO DE FERROS DE DISTRIBUIÇÃO DE ARMADURA NEGATIVA



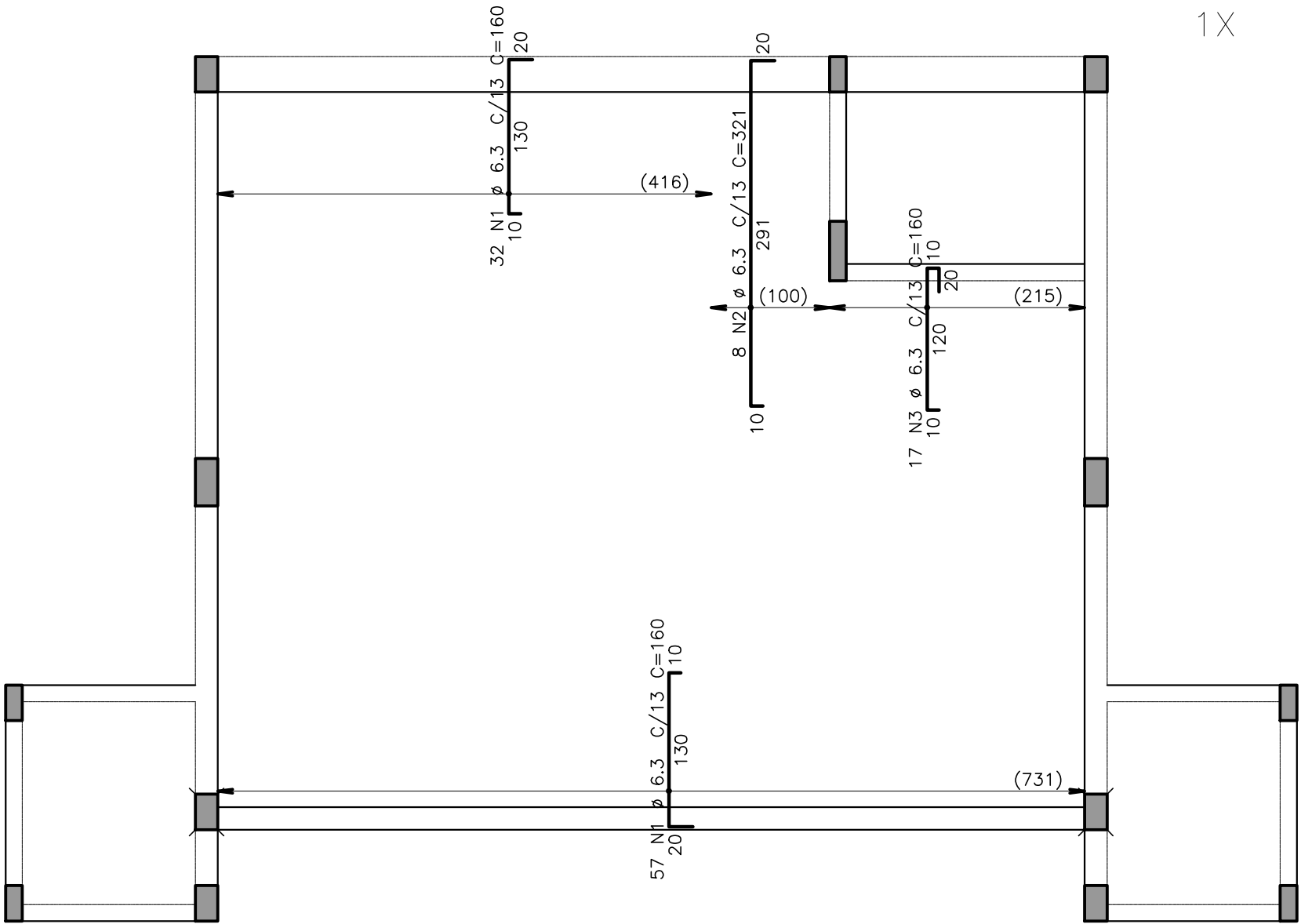
LAJE DO RESERVATORIO – Armadura positiva

1X



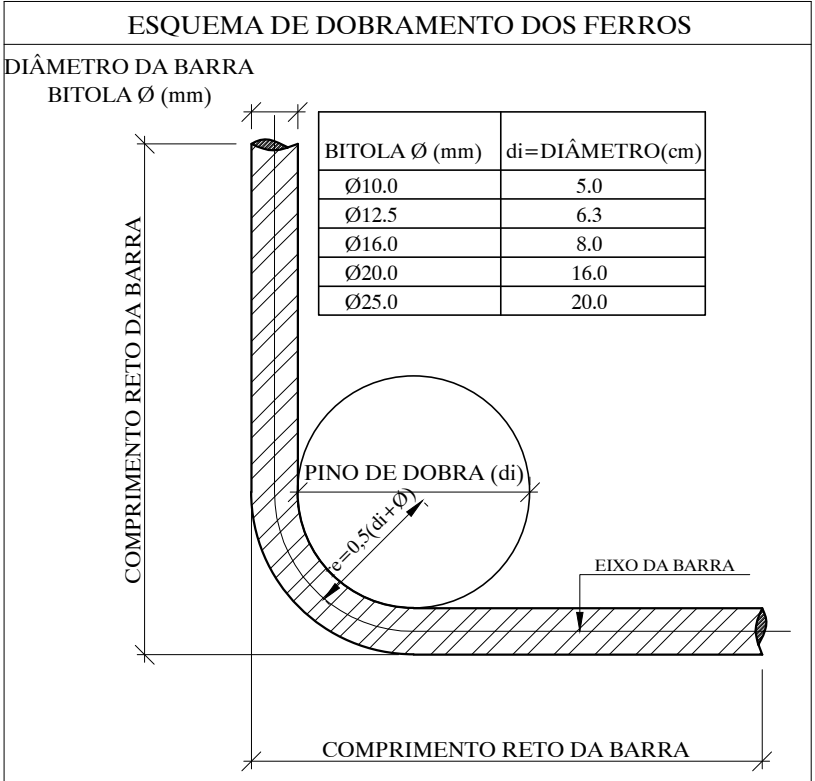
Armadura negativa secundaria

1X



AÇO	POS	BIT (mm)	QUANT	COMPRIMENTO		
				UNIT (cm)	TOTAL (cm)	
LAJE	DO RESERVATORIO	— ARM. NEG.	PRINCIPAL			
	50A	1	6.3	13	162	2106
	50A	2	10	17	369	6273
	50A	3	6.3	62	181	11222
	60B	4	5	55	1140	62700
LAJE	DO RESERVATORIO	— ARM. NEG.	SECUNDARIA			
	50A	1	6.3	89	160	14240
	50A	2	6.3	8	321	2568
	50A	3	6.3	17	160	2720
LAJE	DO RESERVATORIO	— ARMADURA	POSITIVA			
	50A	1	10	25	657	16425
	50A	2	10	17	544	9248
	50A	3	12.5	36	786	28296
	50A	4	12.5	18	657	11826
	50A	5	10	18	480	8640


RESUMO AÇO CA 50-60			
AÇO	BIT (mm)	COMPR (m)	PESO (kg)
60B	5	627	97
50A	6.3	329	80
50A	10	406	250
50A	12.5	401	386
Peso Total		60B =	97 kg
Peso Total		50A =	717 kg



ESCALA

VIGAS:
–VISTA 1:50
–CORTE 1:25

LAJES:
–TERREO 1:75
–COBERTURA 1:50

REV.	DATA	DESCRIÇÃO	SECRETARIA MUNICIPAL DE OBRAS DEPARTAMENTO DE ENGENHARIA E ARQUITETURA		 PREFEITURA MUNICIPAL DE SANTA LUZIA ADM. DELEGADO CHRISTIANO XAVIER
00	28/05/21	EMIÇÃO INICIAL	SECRETÁRIO DE OBRAS	BRUNO MÁRCIO MOREIRA ALMEIDA	
			RESPONSÁVEL TÉCNICO	HUGO KENJI INATOMI CREA/SP 5063373661 D	NÚMERO 063 DISCIPLINA ESTRUTURA ETAPA PROJETO EXECUTIVO DATA 28/05/2021
					FOLHA 11/11 REVISÃO Ø