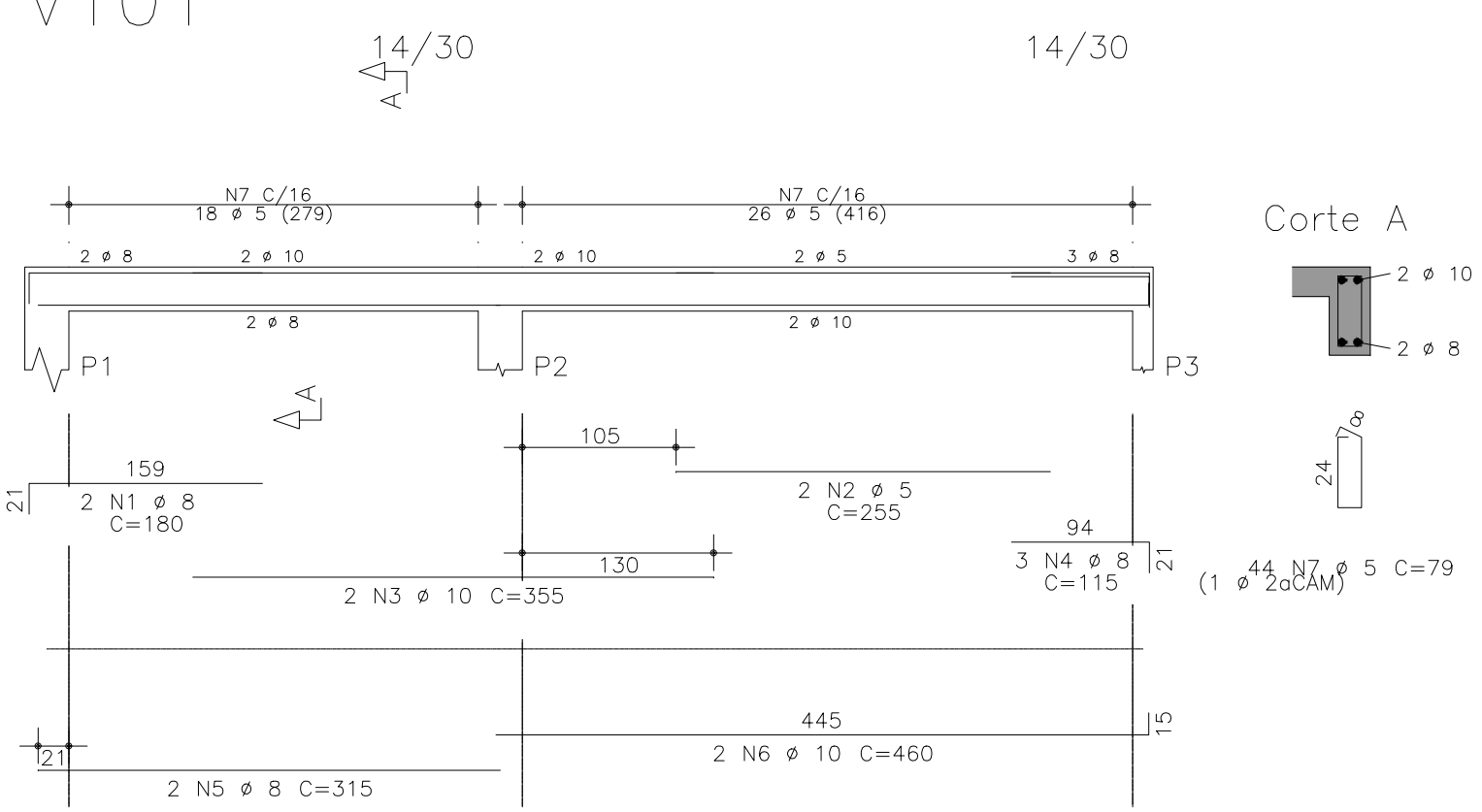
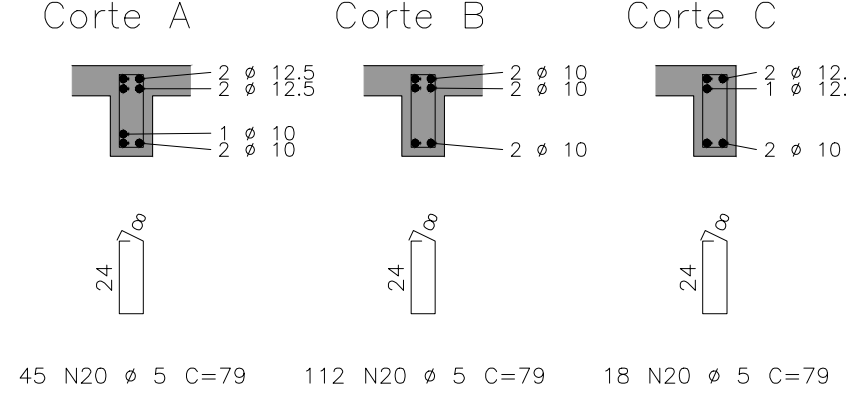
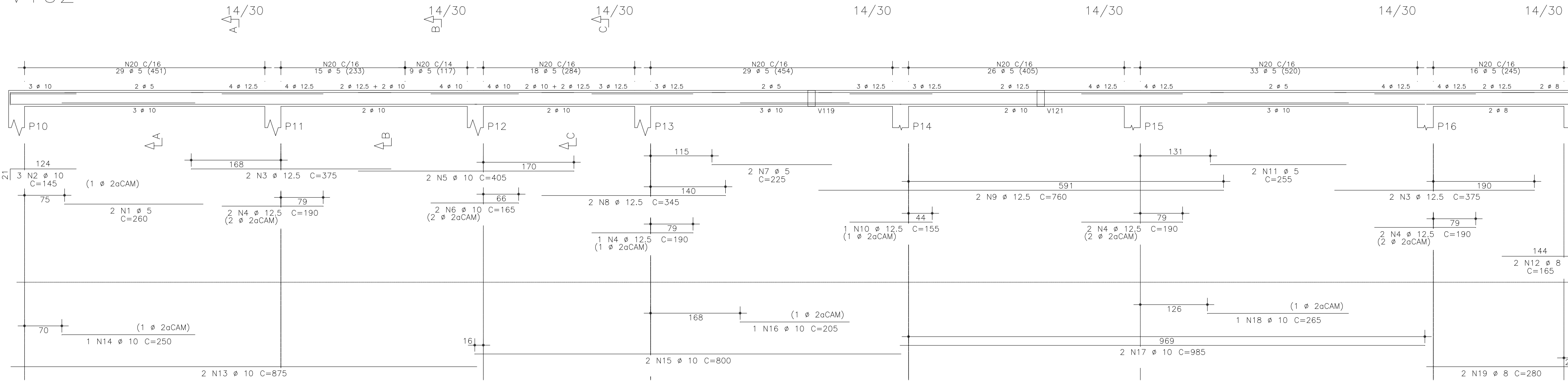


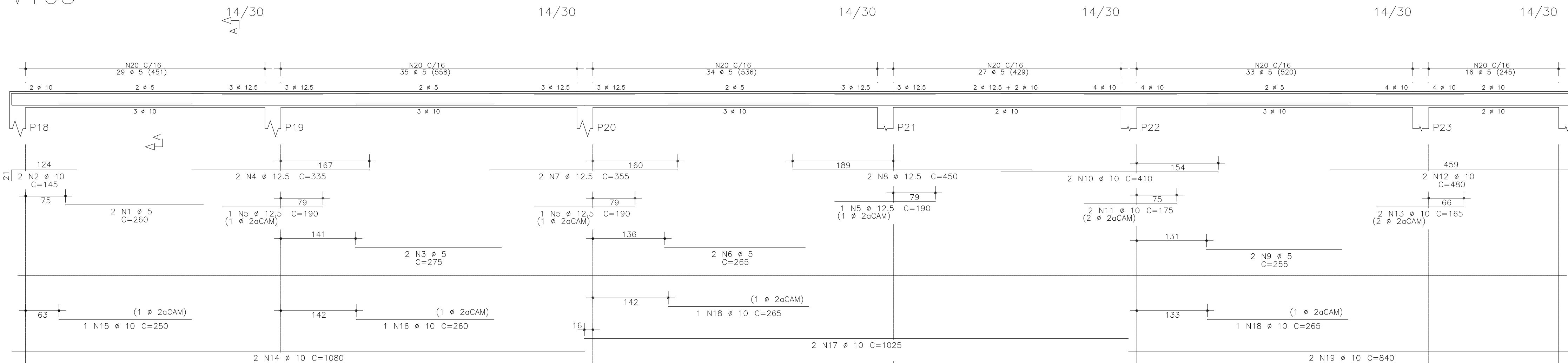
V101



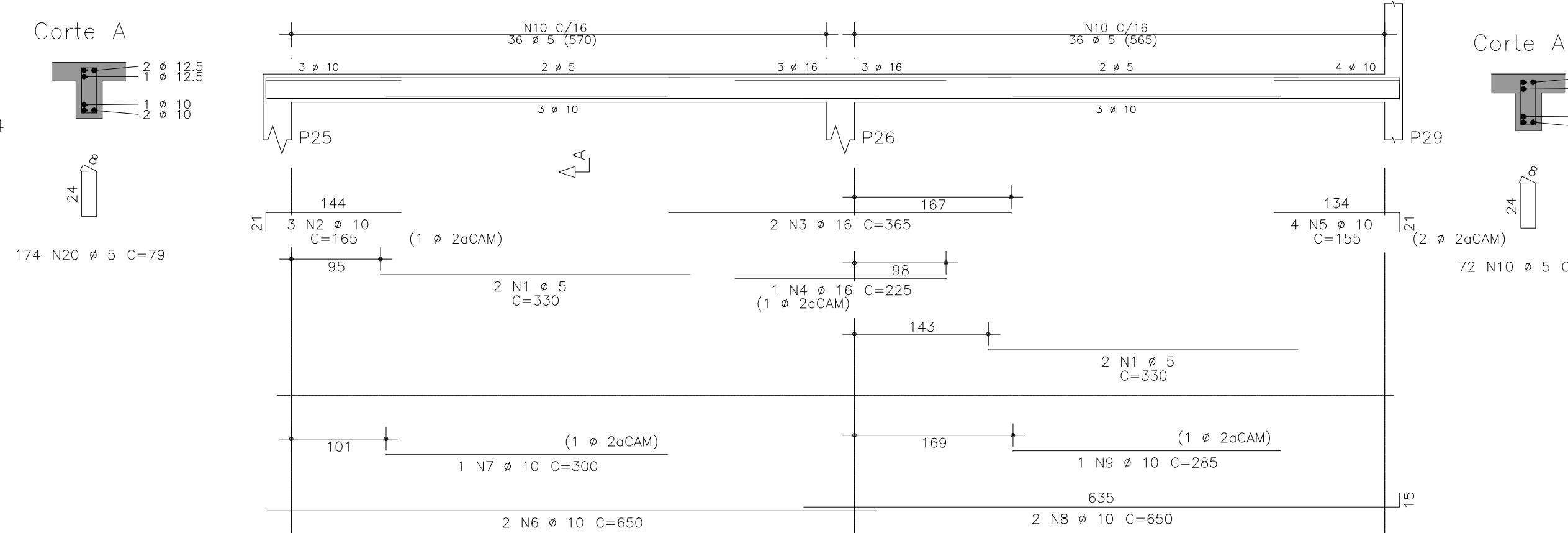
V102



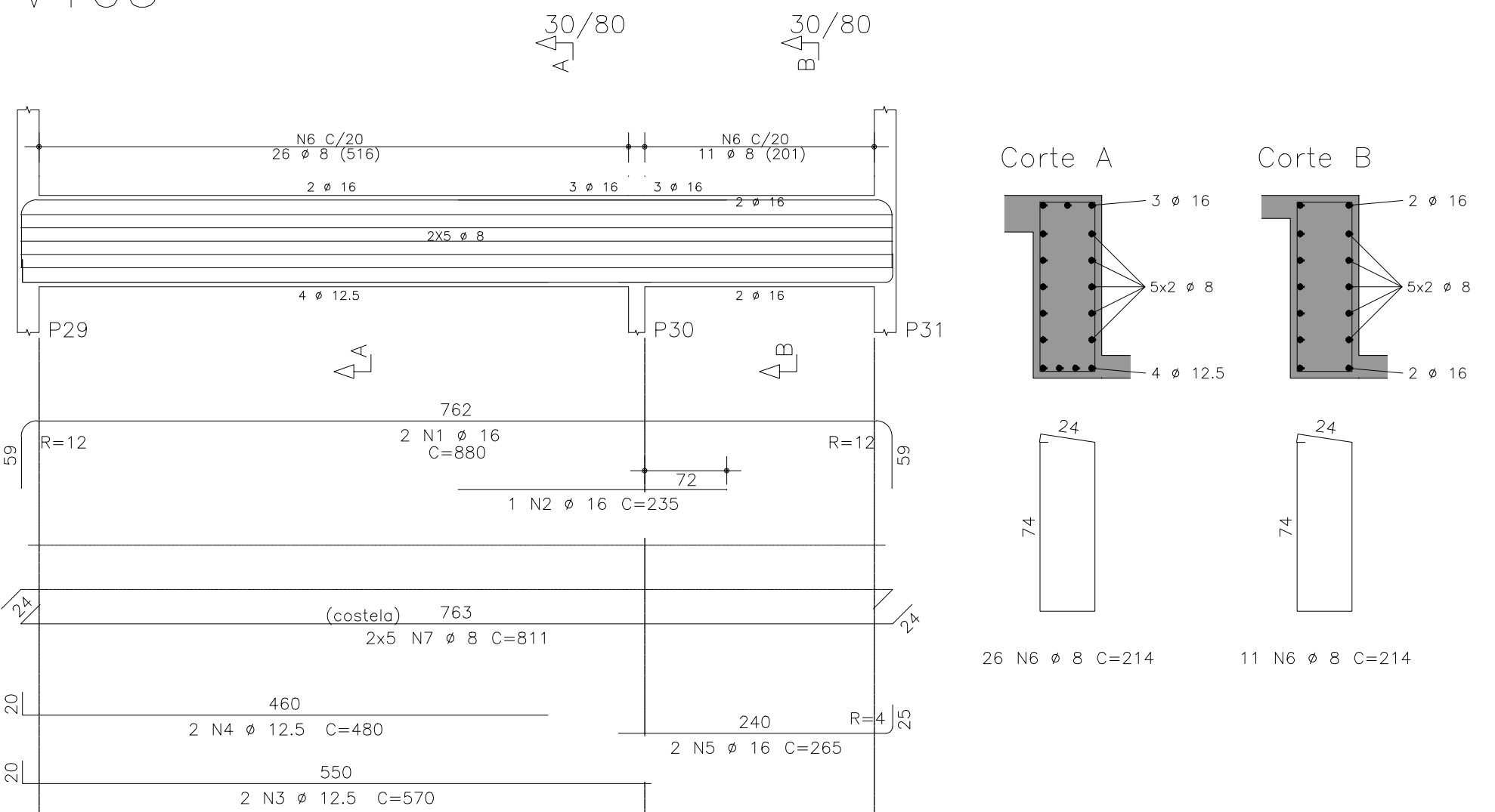
V103



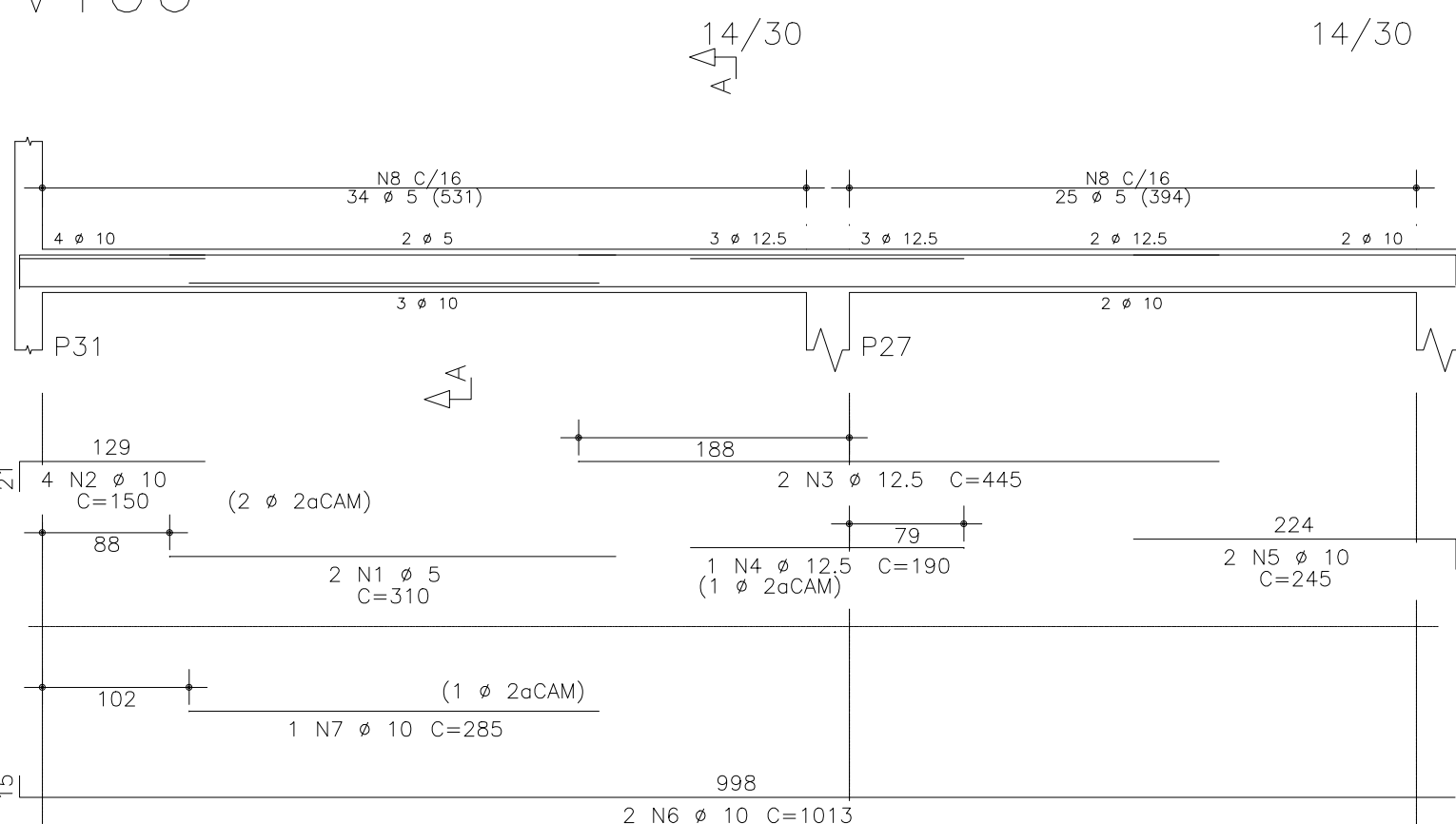
V104



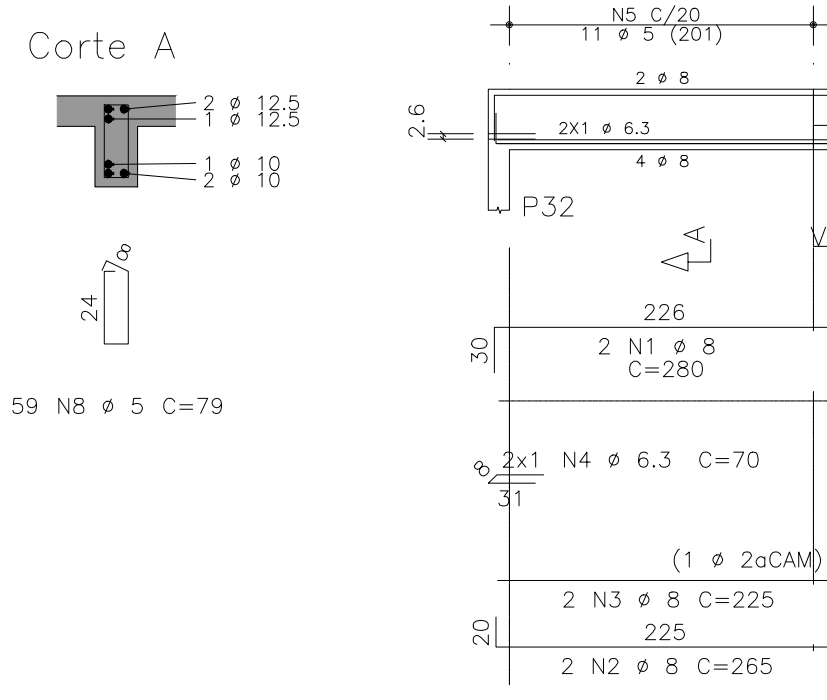
V105



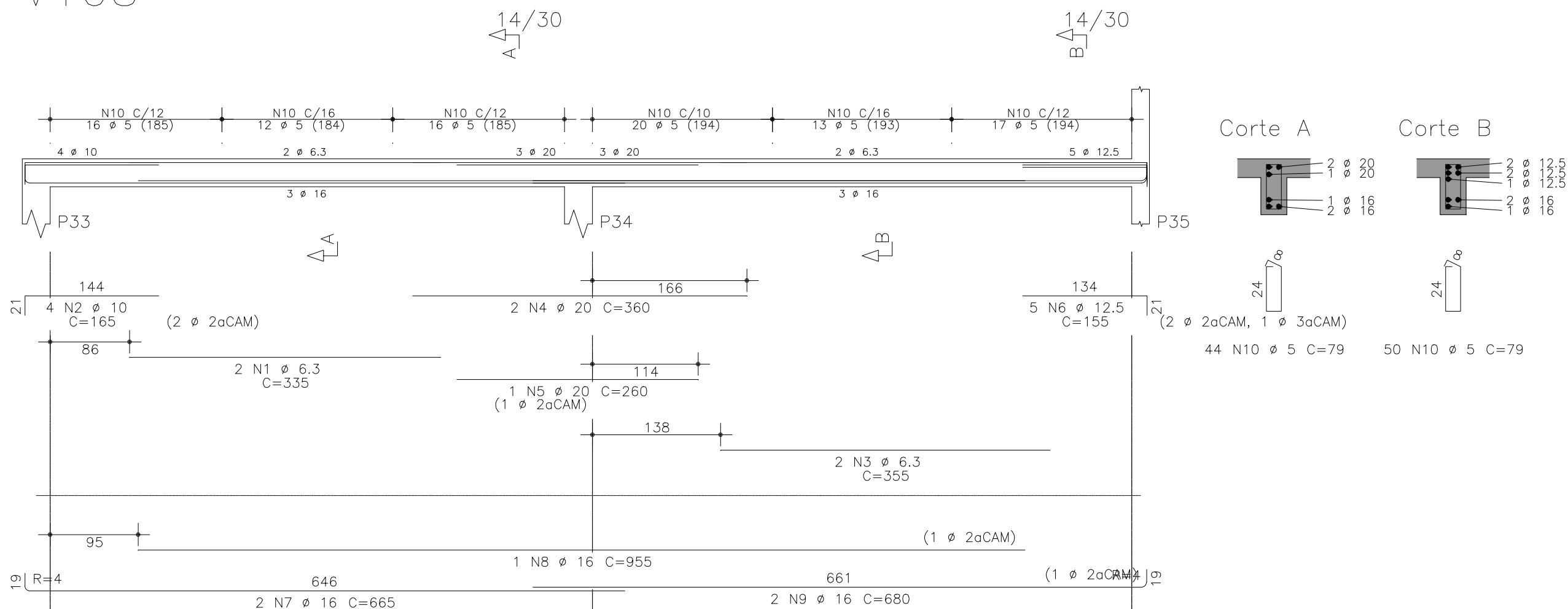
V106



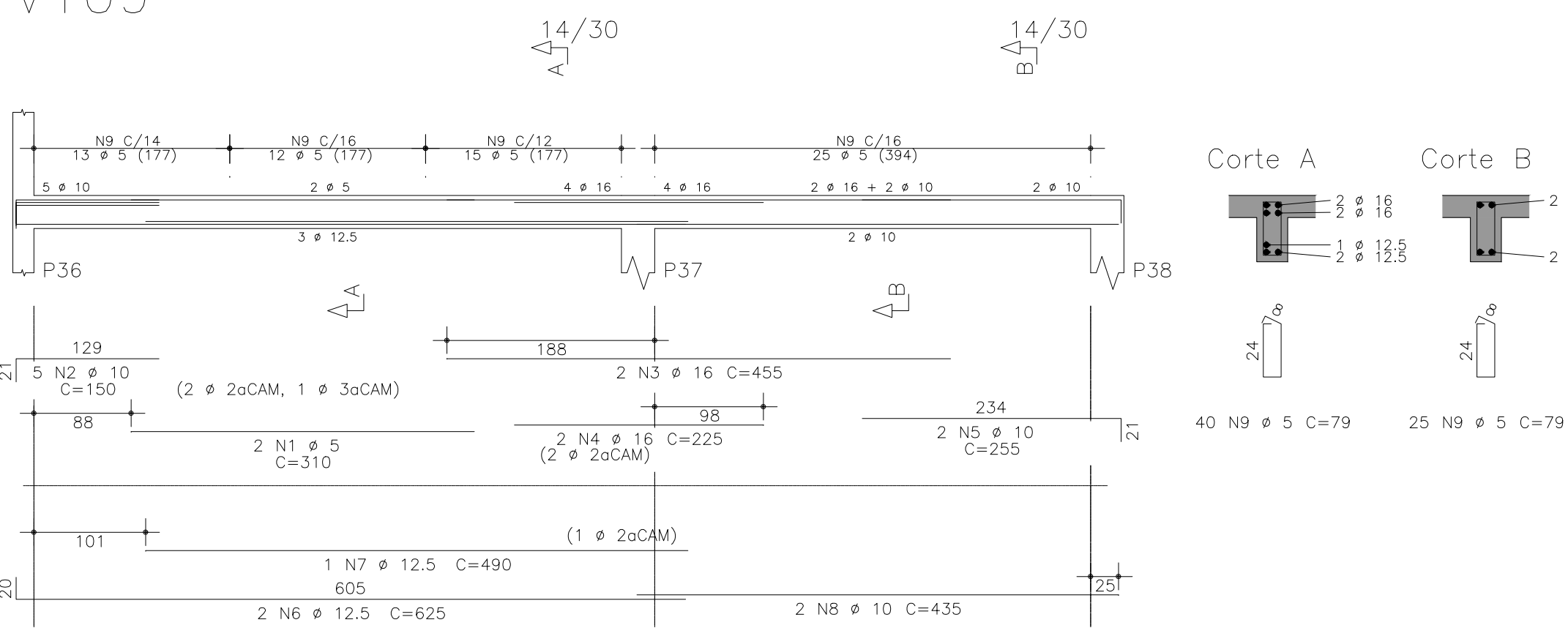
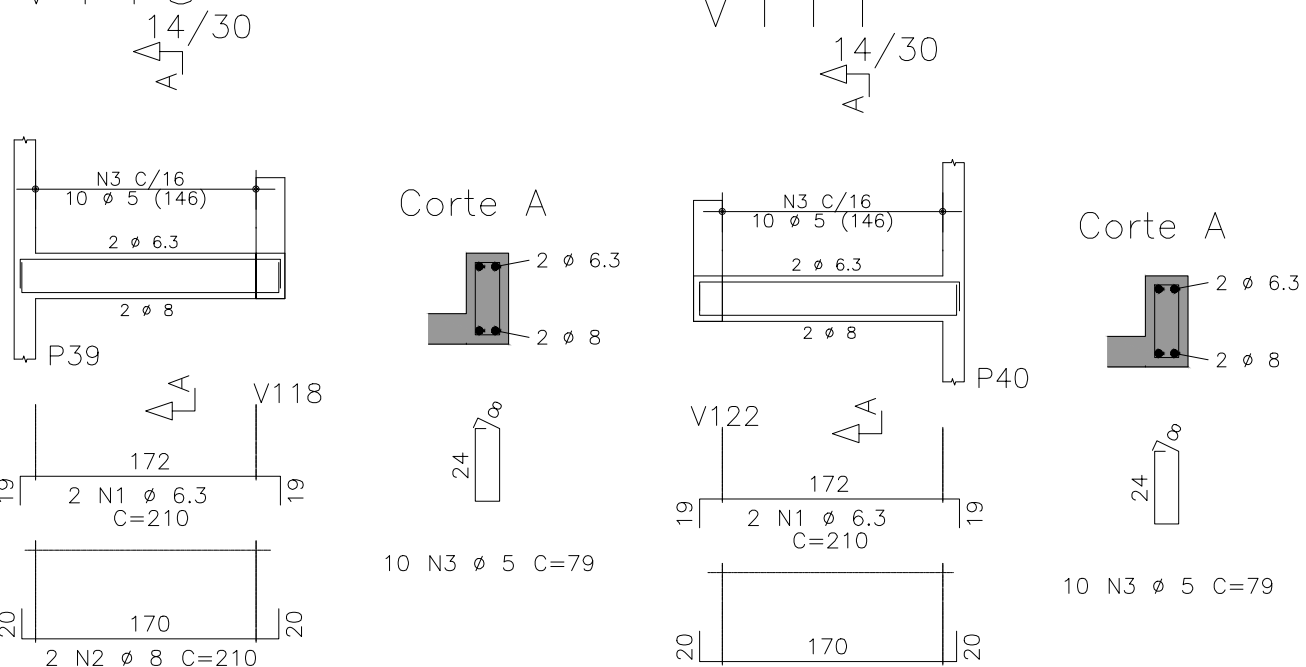
V107



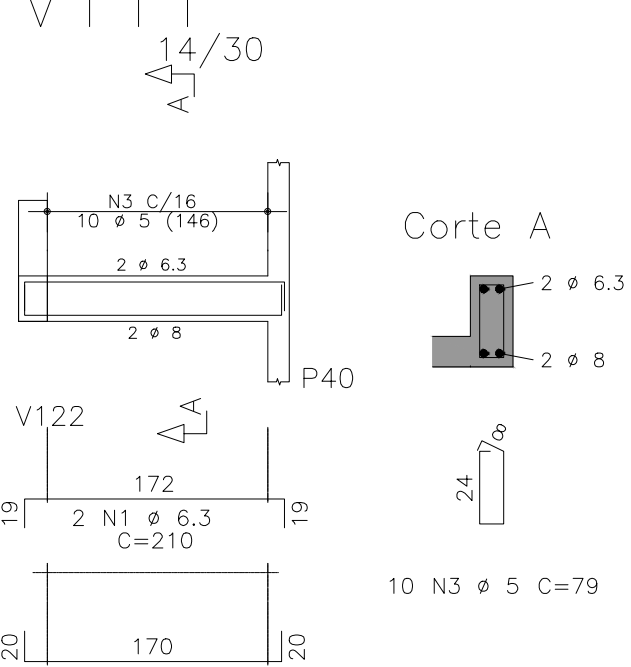
V108



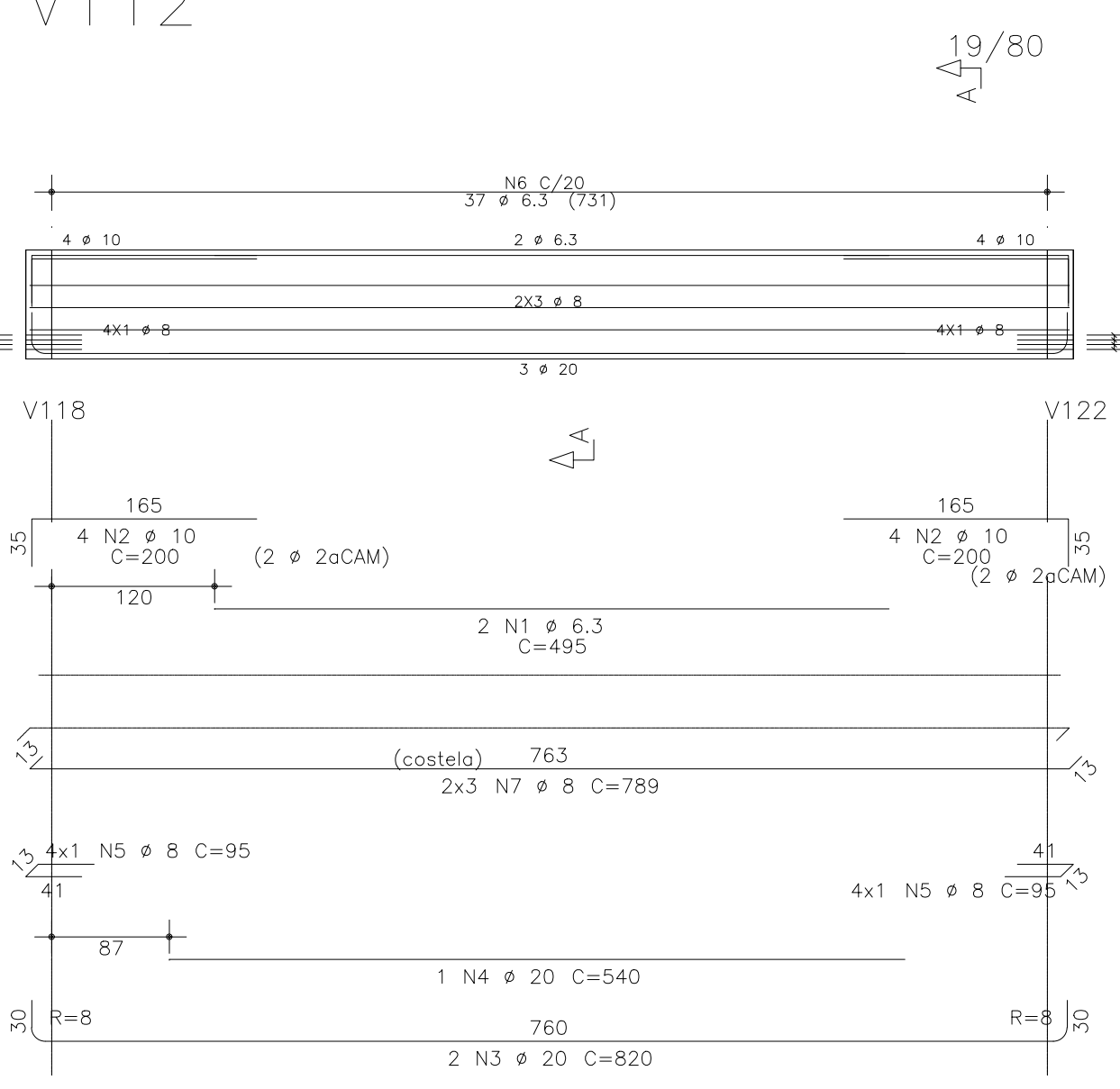
V109

V1 10
14/

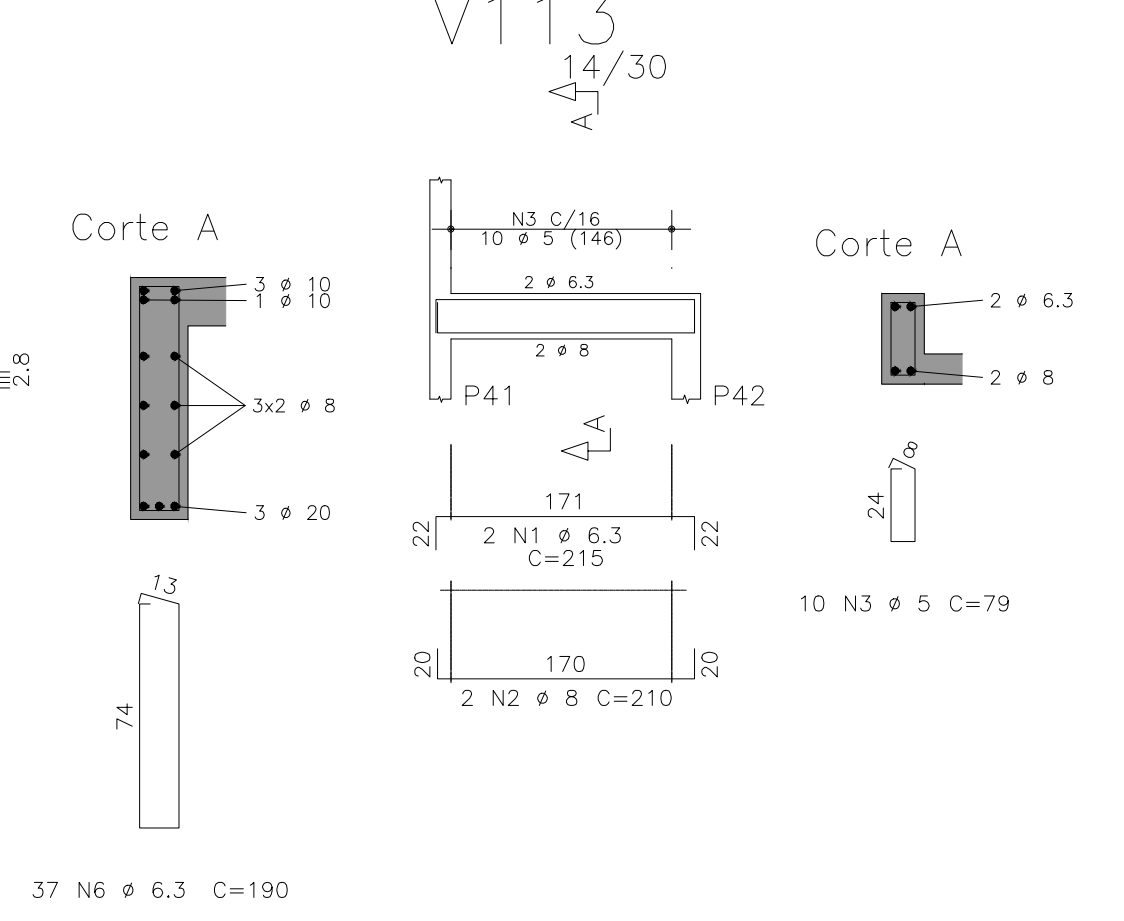
V111



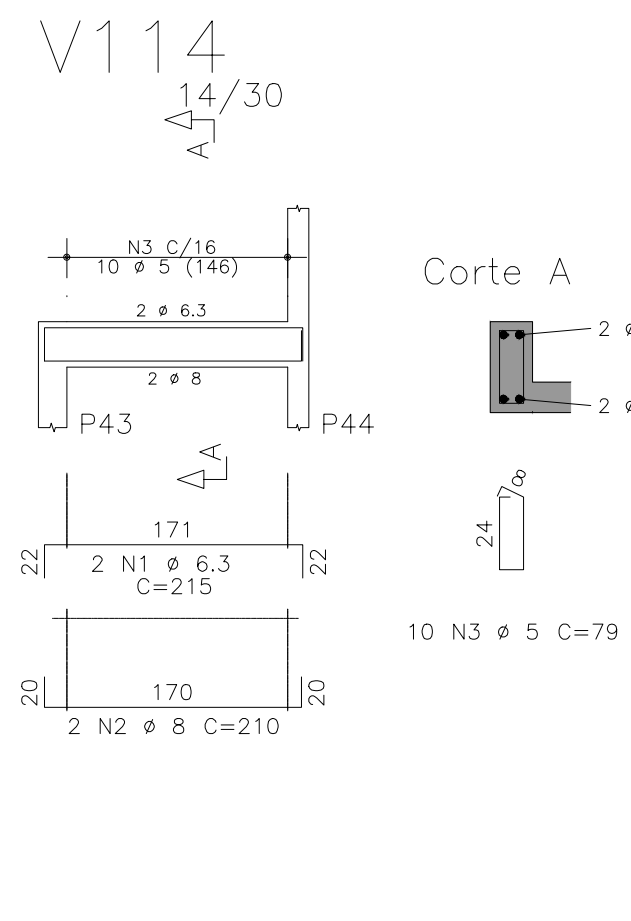
V112



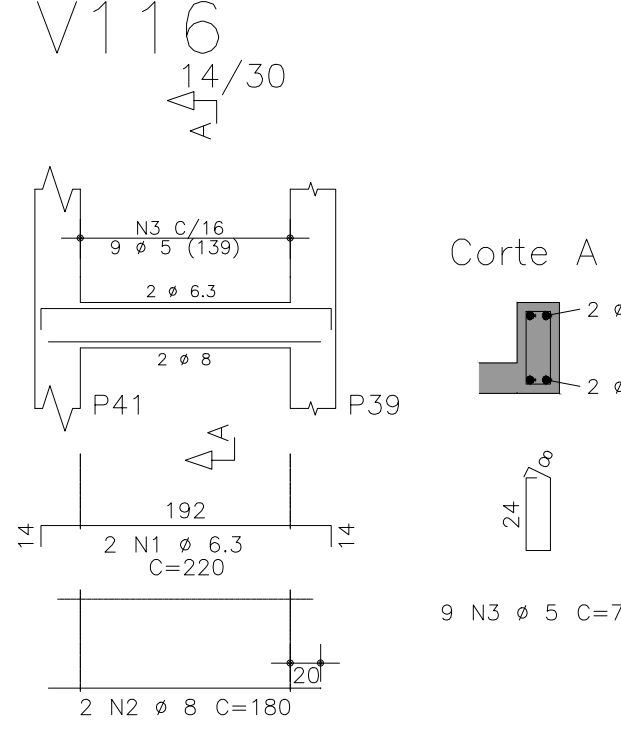
V113



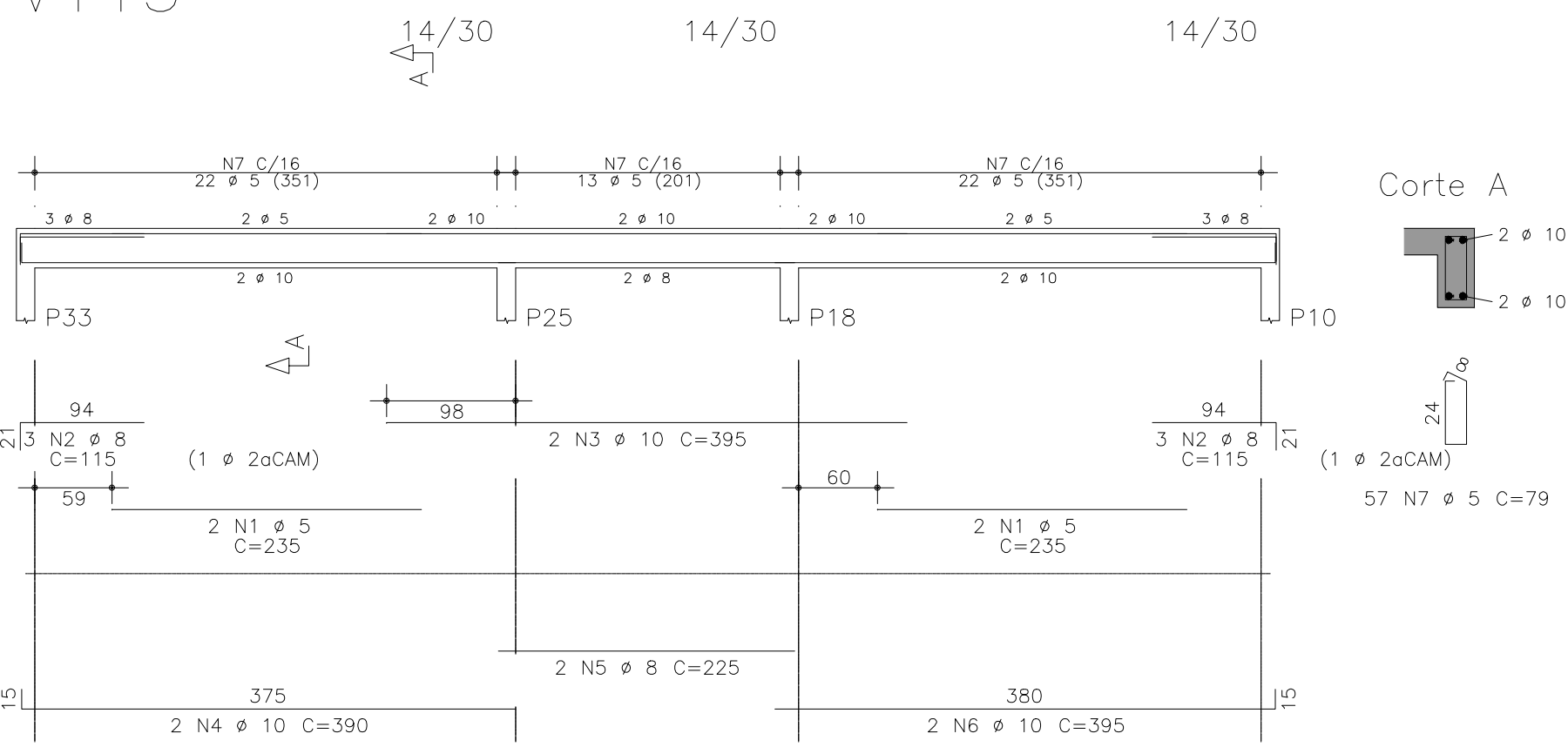
V1 14



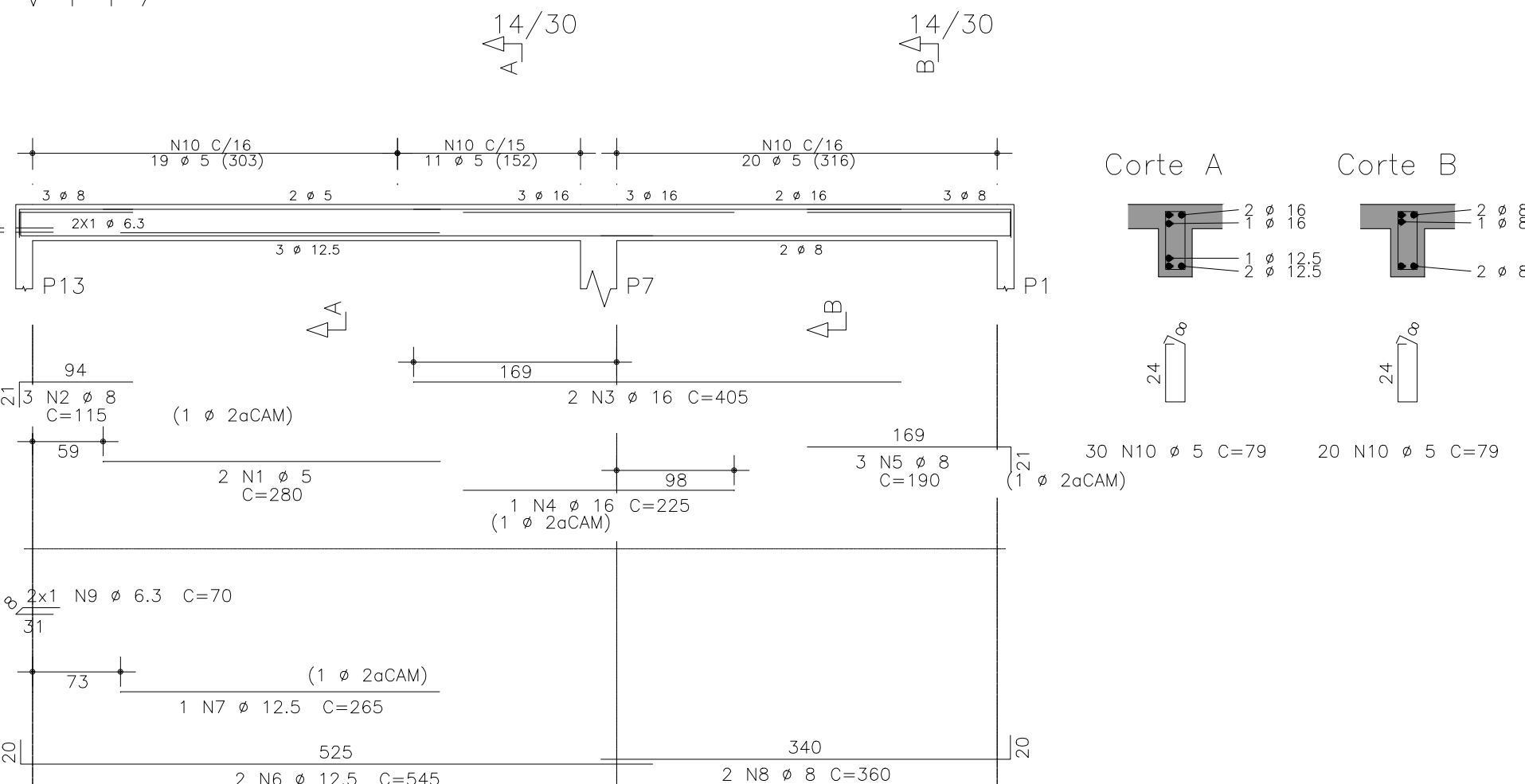
V1 16



V1 15




V117



	ACO	POS	BIT (mm)	QUANT	COMPROMENTO		
					UNIT (cm)	TOTAL (cm)	
V101	50A	1	8	2	180	360	
	60B	2	10	2	175	350	
	50A	3	8	2	355	710	
	50A	5	10	2	115	230	
	50A	5	8	2	315	630	
	60B	6	10	2	460	920	
V102	60B	7	5	44	79	3476	
	50A	2	10	2	260	520	
	50A	2	8	3	145	435	
	50A	4	12.5	7	175	1575	
	50A	4	12.5	7	190	1330	
	50A	5	10	2	345	690	
	50A	6	10	2	165	330	
	60B	7	5	2	225	450	
	50A	8	12.5	2	345	690	
	50A	9	12.5	2	170	1520	
	50A	10	12.5	2	165	1650	
	60B	11	5	2	255	510	
	50A	12	8	3	165	495	
	50A	13	10	2	875	1750	
	50A	14	10	2	250	500	
	50A	15	10	2	800	1600	
	50A	16	10	2	115	230	
	50A	17	10	2	985	1970	
V103	50A	18	10	1	265	265	
	50A	19	10	1	280	540	
	60B	20	5	175	79	13825	
V104	60B	1	5	2	260	520	
	50A	2	10	2	335	670	
	60B	3	5	2	275	550	
	50A	4	12.5	5	335	837.5	
	50A	5	12.5	5	390	975	
	60B	6	5	2	265	530	
	50A	7	12.5	2	325	650	
	50A	8	12.5	2	405	900	
	50A	9	10	2	115	230	
	50A	10	10	2	410	820	
	50A	11	10	2	175	350	
	50A	12	10	2	480	960	
	50A	13	10	2	165	330	
	50A	14	10	2	1080	2160	
	50A	15	10	1	250	250	
	50A	16	10	1	680	680	
	50A	17	10	2	1025	2050	
	50A	19	10	2	840	1680	
V105	50A	10	5	124	79	13766	
	60B	1	5	4	330	1320	
	50A	2	10	3	165	495	
	50A	3	16	2	365	730	
	50A	4	16	2	225	450	
	50A	5	10	4	155	620	
V106	50A	6	10	1	300	300	
	50A	7	10	1	650	650	
	50A	8	10	1	285	285	
	60B	9	5	72	79	1568	
	50A	1	16	2	880	1760	
	50A	2	10	2	335	670	
V107	50A	3	12.5	2	570	1140	
	50A	4	12.5	5	680	1700	
	50A	5	16	2	265	530	
	50A	6	16	2	114	228	
	50A	7	8	10	811	8110	
	60B	8	5	2	310	620	
V108	50A	2	10	4	150	600	
	50A	3	12.5	5	145	580	
	50A	4	12.5	1	190	190	
	50A	5	10	2	285	570	
	50A	6	10	2	1013	2026	
	60B	8	5	59	79	4661	
V109	50A	1	8	2	280	560	
	50A	2	8	2	265	530	
	50A	3	8	2	225	450	
	50A	4	6.3	2	70	140	
	60B	5	5	11	99	1089	
V110	50A	1	6.3	2	335	670	
	50A	2	10	2	360	720	
	50A	3	16	2	355	710	
	50A	4	20	2	260	520	
	50A	5	20	1	260	260	
	50A	6	12.5	5	115	575	
V111	50A	7	16	2	665	1330	
	50A	9	16	1	855	855	
	60B	8	6.3	5	680	3400	
	60B	10	10	5	94	79	7426
	60B	1	5	2	310	620	
	50A	2	10	2	360	720	
V112	50A	3	16	2	455	910	
	50A	5	10	2	225	450	
	50A	6	12.5	2	225	450	
	50A	7	12.5	2	625	1250	
	50A	8	10	2	115	230	
	50A	9	10	2	435	870	
V113	50A	8	10	2	65	79	335
	50A	1	6.3	2	210	420	
	60B	3	5	10	79	790	
V114	50A	1	6.3	2	210	420	
	50A	2	8	2	210	420	
	60B	3	5	10	79	790	
V115	50A	1	6.3	2	215	430	
	50A	2	8	2	210	420	
	60B	3	5	10	79	790	
	60B	1	6.3	2	495	990	
	50A	2	10	8	200	1600	
	50A	4	20	1	540	540	
V116	50A	5	8	6	95	8	8
	50A	6	6.3	37	190	7030	
	50A	7	8	6	289	4734	
	50A	1	6.3	2	215	430	
	50A	2	8	2	210	420	
	60B	3	5	10	79	790	
V117	50A	1	6.3	2	215	430	
	50A	2	8	2	210	420	
	60B	3	5	10	79	790	
	60B	1	6.3	2	435	870	
	50A	2	10	8	180	1440	
	50A	3	5	9	79	711	
V118	60B	1	5	2	280	560	
	50A	2	8	3	115	345	
	50A	3	10	2	175	350	
	50A	4	16	1	225	225	
	50A	5	10	1	190	190	
	50A	6	12.5	1	545	1089	
	50A	7	12.5	1	265	265	
	50A	8	8	2	660	720	
	60B	9	5	50	79	3740	

RESUMO AÇO CA 50-60			
AÇO	BIT (mm)	COMPR (m)	PESO (kg)
60B	5	755	116
50A	6,3	118	29
50A	8	301	119
50A	10	334	206
50A	12,5	151	145
50A	16	95	150
50A	20	32	78
Peso Total	60B =		116 kg
Peso Total	50A =		727 kg

REV.	DATA	DESCRIÇÃO	SECRETARIA MUNICIPAL DE OBRAS DEPARTAMENTO DE ENGENHARIA E ARQUITETURA	
00	05/05/21	EMIÇÃO INICIAL	SECRETÁRIO DE OBRAS	BRUNO MÁRCIO MOREIRA ALMEIDA
			RESPONSÁVEL TÉCNICO	HUGO KENJI INATOMI CREA/SP 5063373661 D

		PREFEITURA MUNICIPAL DE SANTA LUZIA ADM. DELEGADO CHRISTIANO XAVIER	
NÚMERO	DISCIPLINA	ETAPA	DATA
000	ESTRUTURA	PROJETO EXECUTIVO	05/05/20
CONTEÚDO DA FRANQUIA			FOLHA
UNIDADE BÁSICA DE SAÚDE - VALE DOS COQUEIROS ARMAÇÃO - VIGAS DA COBERTURA			03/05
			REVISÃO
			00