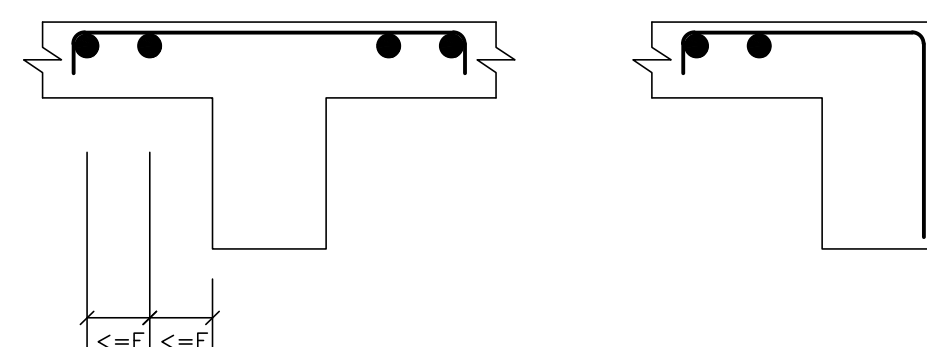
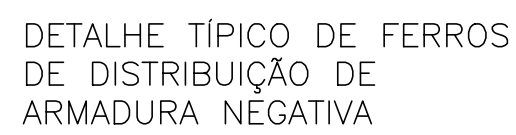
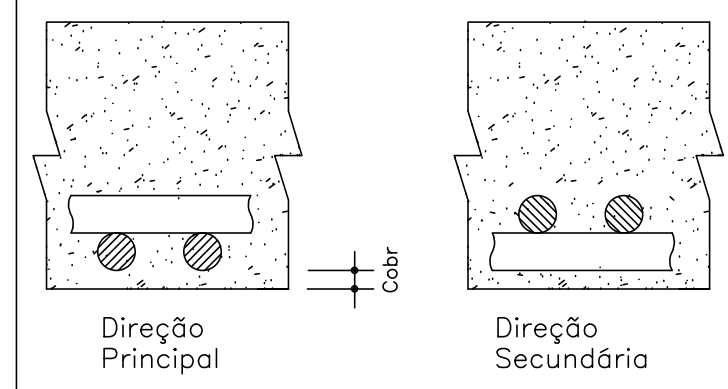


1X



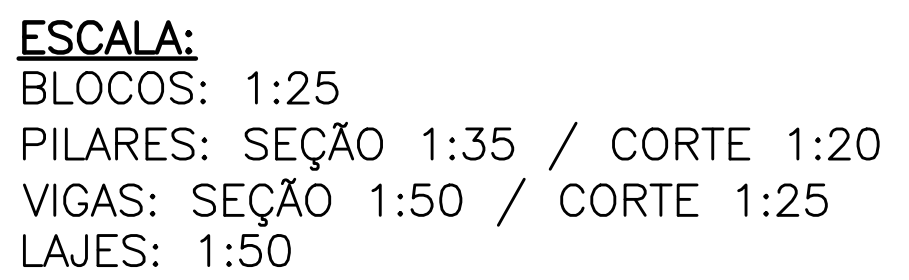
Detalhe genérico do alojamento de armaduras positivas



| ACO | POS | BIT | QUANT | COMPROMENTO |
|--|-----|------|-------|-------------|
| | | (mm) | | UNIT TOTAL |
| COBERTURA (NIVEL 3.00-) ARM. NEGATIVE VER | | | | |
| 50A | 1 | 8 | 17 | 165 2805 |
| 50A | 2 | 8 | 131 | 1175 2055 |
| 50A | 3 | 6 | 10 | 130 910 |
| 50A | 4 | 6 | 37 | 125 460 |
| 50A | 5 | 6 | 48 | 175 840 |
| 50A | 6 | 6 | 26 | 235 6110 |
| 50A | 7 | 6 | 109 | 100 10900 |
| 50A | 8 | 6 | 34 | 285 566 |
| 50A | 9 | 6 | 34 | 364 54 |
| 50A | 10 | 6 | 6 | 373 22 |
| 50A | 11 | 6 | 6 | 373 22 |
| 50A | 12 | 6 | 6 | 373 22 |
| 50A | 13 | 6 | 6 | 373 22 |
| 50A | 14 | 6 | 37 | 308 1348 |
| 50A | 15 | 6 | 37 | 314 872 |
| 50A | 16 | 6 | 48 | 310 15240 |
| 50A | 17 | 6 | 6 | 308 100 |
| 50A | 18 | 6 | 36 | 305 10980 |
| 50A | 19 | 6 | 36 | 318 108 |
| 50A | 20 | 6 | 12 | 464 558 |
| 50A | 21 | 6 | 10 | 506 506 |
| 50A | 22 | 6 | 10 | 506 506 |
| 50A | 23 | 6 | 10 | 145 145 |
| 50B | 23 | 6 | 63 | 145 145 |
| COBERTURA (NIVEL 3.00-) ARM. NEGATIVE VER | | | | |
| 50A | 1 | 8 | 17 | 336 336 |
| 50A | 2 | 6 | 10 | 175 175 |
| 50A | 3 | 6 | 10 | 451 451 |
| 50A | 4 | 6 | 10 | 480 480 |
| 50A | 5 | 6 | 6 | 326 326 |
| 50A | 6 | 6 | 3 | 102 102 |
| 50A | 7 | 6 | 46 | 120 5520 |
| 50A | 8 | 6 | 6 | 580 580 |
| 50A | 9 | 6 | 6 | 170 1020 |
| 50A | 10 | 10 | 10 | 590 290 |
| 50A | 11 | 6 | 6 | 246 110 |
| 50A | 12 | 6 | 6 | 177 11850 |
| 50A | 13 | 6 | 6 | 333 333 |
| 50A | 14 | 6 | 14 | 216 304 |
| 50A | 15 | 6 | 14 | 216 336 |
| 50A | 16 | 6 | 10 | 244 9760 |
| 50A | 17 | 6 | 3 | 212 198 |
| 50A | 18 | 6 | 3 | 82 82 |
| 50A | 19 | 6 | 33 | 232 14616 |
| 50A | 20 | 6 | 33 | 232 112 |
| 50A | 21 | 6 | 6 | 210 166 |
| 50A | 22 | 6 | 6 | 152 152 |
| 50A | 23 | 6 | 27 | 380 10260 |
| 50A | 24 | 6 | 13 | 262 162 |
| 50A | 25 | 6 | 6 | 455 1365 |
| 50A | 26 | 6 | 6 | 455 3720 |
| 50A | 27 | 6 | 6 | 455 170 |

| RESUMO AÇO CA 50-60 | | | |
|---------------------|-------------|--------------|--------------|
| AÇO | BIT (mm) | COMPR (m) | PESO (kg) |
| 60B | 5 | 718 | 111 |
| 50A | 6,3 | 2546 | 624 |
| 50A | 8 | 356 | 140 |
| 50A | 10 | 30 | 18 |
| Peso Total | 60B = | | 111 kg |
| Peso Total | 50A = | | 782 kg |

1X

[illegible]